

Medicaid Regional Data Compendium, 2014 Chartbook 16: Tug Hill Seaway

This chartbook is part of a broader data compendium from the Medicaid Institute at United Hospital Fund. It presents data on the demographics, service usage, and quality measures for Medicaid beneficiaries from the Tug Hill Seaway region. The chartbook is based on data for the Medicaid population residing in the region, regardless of where they receive care; it is not a comprehensive look at care provided in the region. For details on data elements, please see the accompanying methods and sources.

Medicaid Regional Data Compendium, 2014 was prepared by Lee Kennedy-Shaffer and Chad Shearer of the Medicaid Institute at United Hospital Fund. The entire publication is available at www.uhfnyc.org and www.medicaidinstitute.org. Funded by the New York State Department of Health.

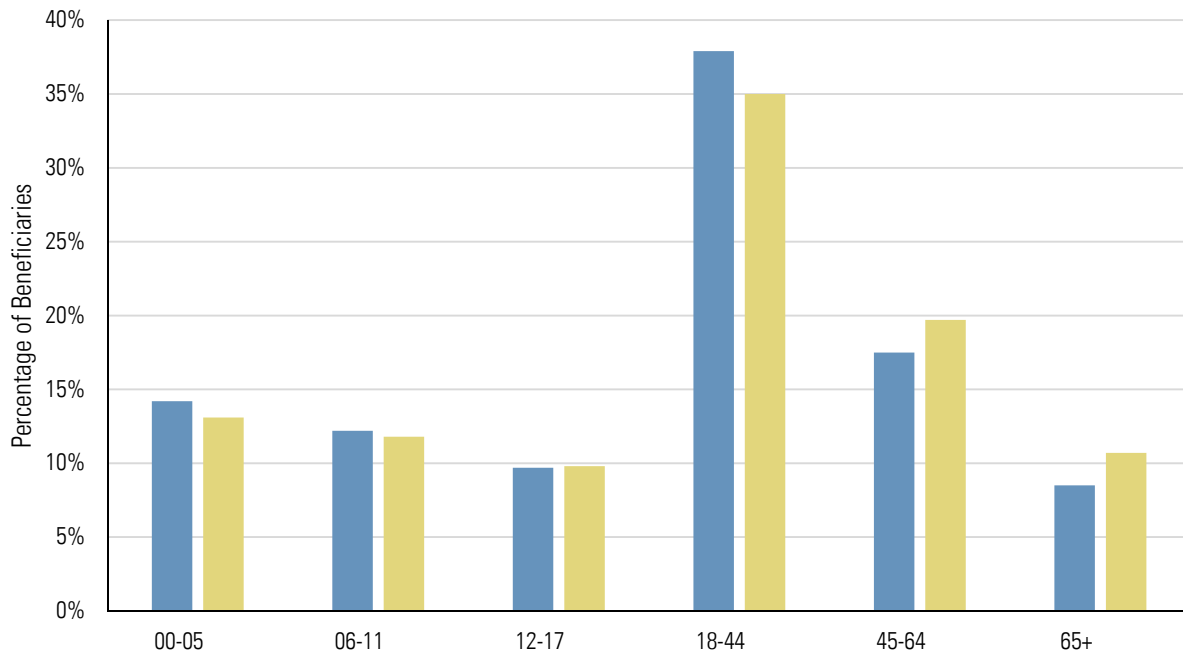
- Fairly small per-capita Medicaid population.
- Higher share of younger beneficiaries and lower share of older beneficiaries than the state as a whole.
- Unadjusted inpatient admission rate lower than the statewide average.
- Rate of potentially avoidable hospitalizations (PQIs) for adult acute and chronic conditions worse than risk-adjusted expectations, especially for diabetes and respiratory conditions.
- PQIs for children better than risk-adjusted expectations for acute conditions overall, although worse than expectations for gastroenteritis. PQIs for children worse than risk-adjusted expectations for chronic conditions, especially asthma.
- More potentially preventable emergency room visits than the risk-adjusted expectation.

Summary Data for Tug Hill Seaway

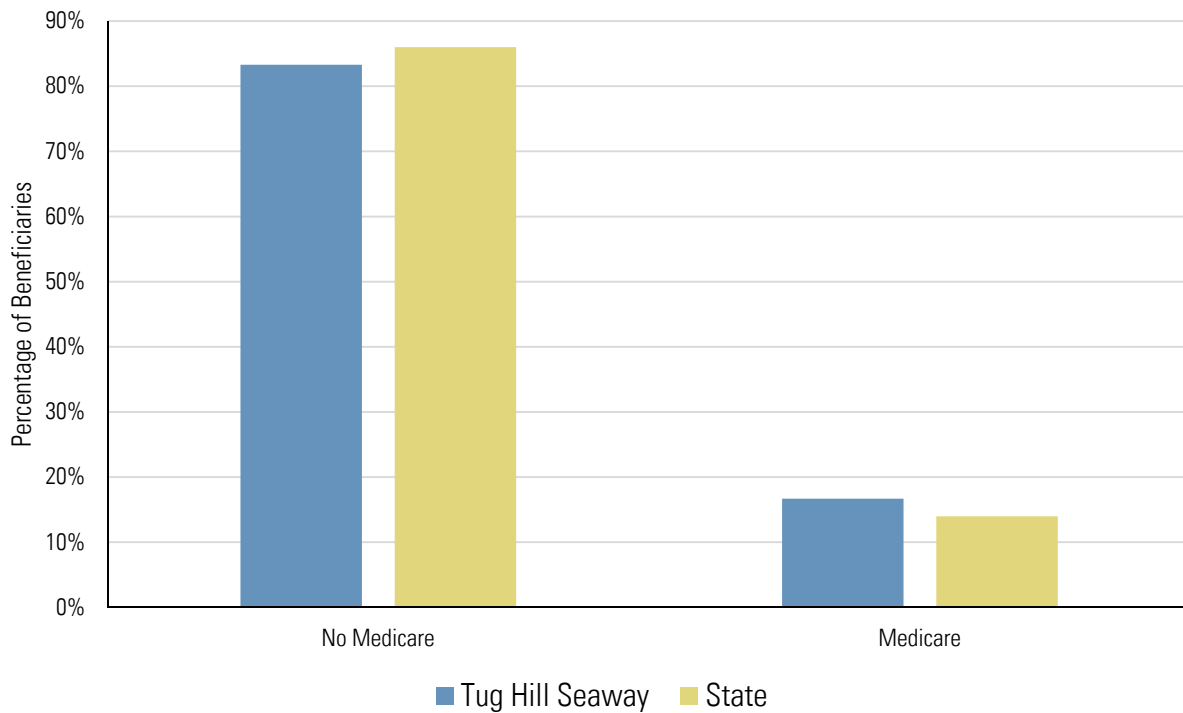
Counties	Jefferson, Lewis, St. Lawrence
Total Population as of July 1, 2013	258,616
Medicaid Beneficiaries with a Claim in 2013	50,398 (19.5% of Total Population)
Medicaid Claims in 2013	2,098,099 (41.6 Claims per Beneficiary)
Medicaid Beneficiaries Enrolled in Managed Care	27,738 (55.0% of Medicaid Beneficiaries)
Mainstream Managed Care Plans	Excellus Health Plan, NYS Catholic Health Plan, United Healthcare Plan
Managed Long-Term Care Plans	No enrollees
Health Homes in the Region	Central New York Health Home Network (CNYHHN), St. Joseph's Hospital Health Center dba St. Joseph's Care Coordination Network (SJCCN)

Characteristics of Medicaid Beneficiaries

Medicaid Beneficiaries by Age Group



Medicaid Beneficiaries by Medicare Enrollment Status



Note: Age group and enrollment status are for Medicaid beneficiaries with a claim in 2013.

Diagnosis and Provider Data

Top 25 Diagnostic Categories of All-Payer Inpatient Admissions (2012)

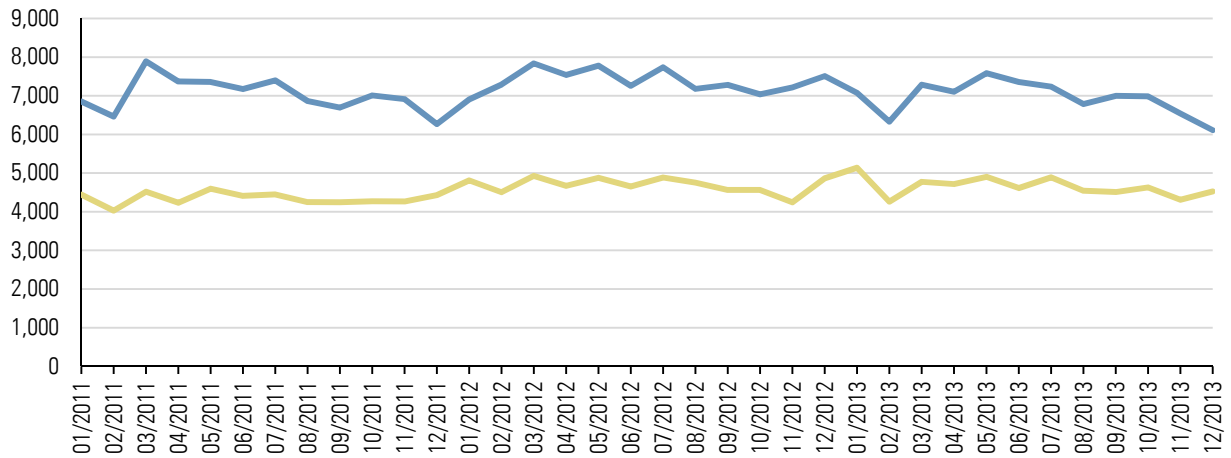
Rank	Diagnosis Category	Number of Discharges	Percent of Discharges	Statewide Percentage
1	Liveborn	3,361	10.99%	9.43%
2	Mood disorders	1,513	4.95%	2.49%
3	Pneumonia (except that caused by tuberculosis or sexually transmitted disease)	927	3.03%	2.19%
4	Chronic obstructive pulmonary disease and bronchiectasis	781	2.55%	1.48%
5	Septicemia (except in labor)	756	2.47%	3.03%
6	Prolonged pregnancy	686	2.24%	1.18%
7	Congestive heart failure; nonhypertensive	672	2.20%	2.28%
8	Osteoarthritis	650	2.12%	2.05%
9	Substance-related disorders	569	1.86%	1.58%
10	Acute myocardial infarction	553	1.81%	1.40%
11	Cardiac dysrhythmias	551	1.80%	2.02%
12	Skin and subcutaneous tissue infections	531	1.74%	1.73%
13	Other complications of pregnancy	518	1.69%	1.34%
14	Coronary atherosclerosis and other heart disease	504	1.65%	1.67%
15	Other complications of birth; puerperium affecting management of mother	478	1.56%	1.61%
16	Schizophrenia and other psychotic disorders	426	1.39%	1.69%
17	Previous C-section	422	1.38%	1.16%
18	Other nutritional; endocrine; and metabolic disorders	409	1.34%	0.64%
19	Complication of device; implant or graft	405	1.32%	1.52%
20	Alcohol-related disorders	400	1.31%	1.85%
21	Diabetes mellitus with complications	396	1.29%	1.52%
22	Biliary tract disease	379	1.24%	1.16%
23	Urinary tract infections	357	1.17%	1.36%
24	Diverticulosis and diverticulitis	341	1.11%	0.82%
25	Fluid and electrolyte disorders	339	1.11%	1.15%
Total of Top 25		16,924	55.33%	48.35%
All Other Diagnoses		13,666	44.67%	51.65%
Total for Region		30,590		

Top Five Inpatient Providers Serving the Region's Medicaid Beneficiaries (2013)

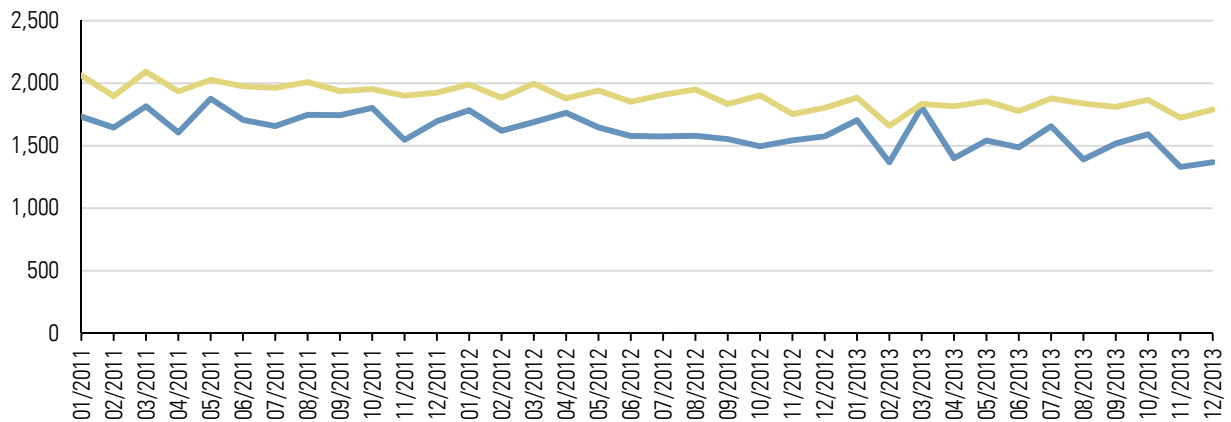
Provider Name	Number of Claims	Number of Unique Patients	Percent of Unique Patients
Samaritan Medical Center	2,601	2,123	30.8%
Canton-Potsdam Hospital	1,357	1,071	15.6%
Hepburn Medical Center	1,209	879	12.8%
Massena Memorial Hospital	702	597	8.7%
Lewis County General Hospital	551	480	7.0%
Total of Top Five Providers	6,420		

Visit Rates (Unadjusted)

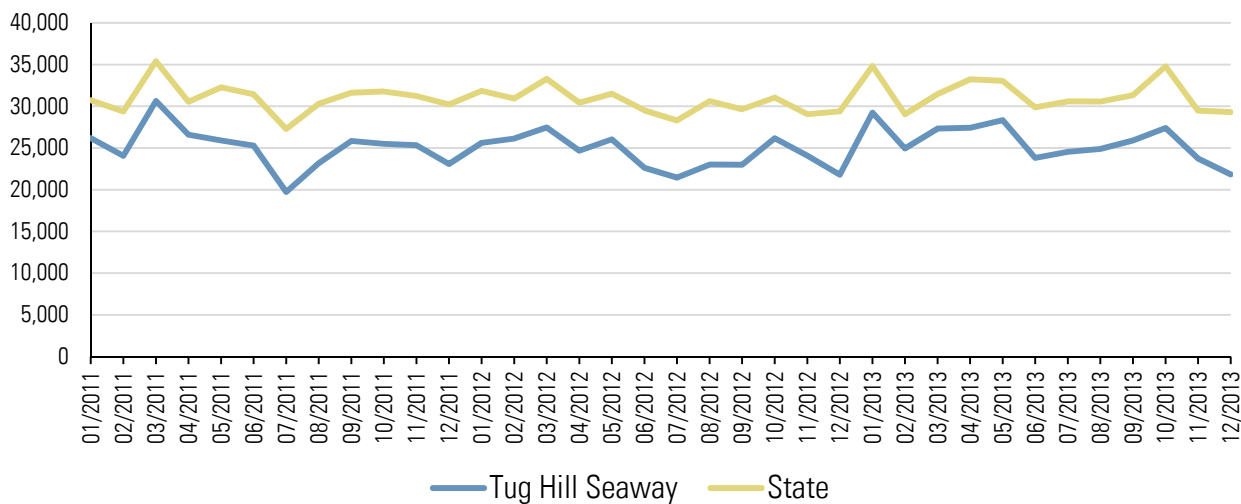
Emergency Room Visit Rate per 100,000 Members



Inpatient Admission Rate per 100,000 Members



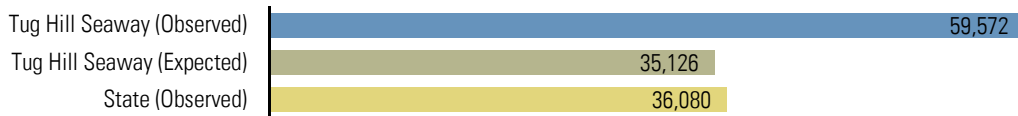
Primary Care Visit Rate per 100,000 Members



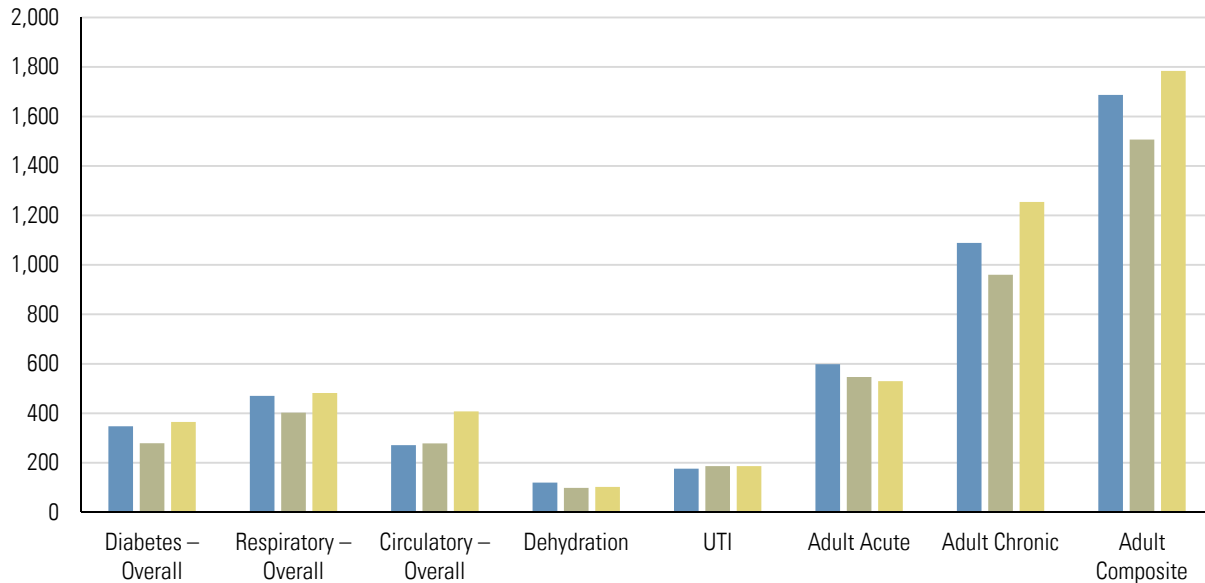
— Tug Hill Seaway — State

Quality Measures

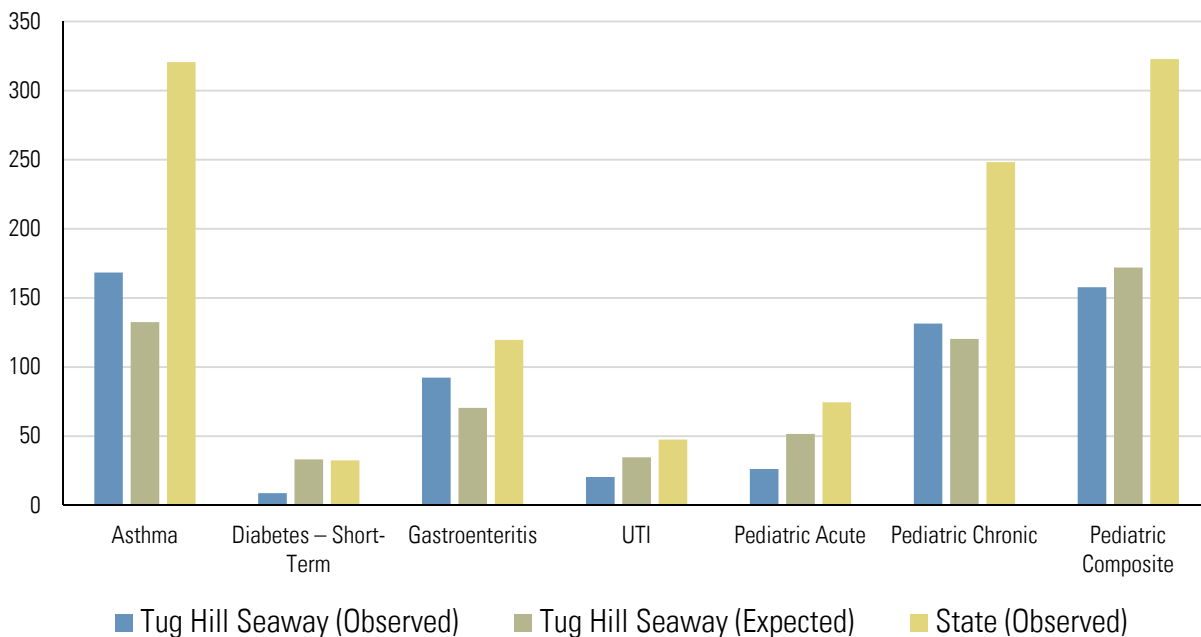
Potentially Preventable Emergency Room Visits (Rate per 100,000 Members)



Prevention Quality Indicators for Adult Discharges (Hospitalization Rate per 100,000 Members)



Prevention Quality Indicators for Pediatric Discharges (Hospitalization Rate per 100,000 Members)



Note: All expected rates are standardized for age, sex, and race/ethnicity. Quality measures are annual rates for 2012.

DSRIP Project Design Grants Awarded in the Region

Provider Name	Counties Served	Total Award	Conditions	Public Hospital
Samaritan Medical Center	Jefferson, Lewis, St. Lawrence	\$500,000	None at this time	