

Medicaid Regional Data Compendium, 2014

Chartbook 15: Southern Tier

This chartbook is part of a broader data compendium from the Medicaid Institute at United Hospital Fund. It presents data on the demographics, service usage, and quality measures for Medicaid beneficiaries from the Southern Tier region. The chartbook is based on data for the Medicaid population residing in the region, regardless of where they receive care; it is not a comprehensive look at care provided in the region. For details on data elements, please see the accompanying methods and sources.

Medicaid Regional Data Compendium, 2014 was prepared by Lee Kennedy-Shaffer and Chad Shearer of the Medicaid Institute at United Hospital Fund. The entire publication is available at www.uhfny.org and www.medicainstitute.org. Funded by the New York State Department of Health.

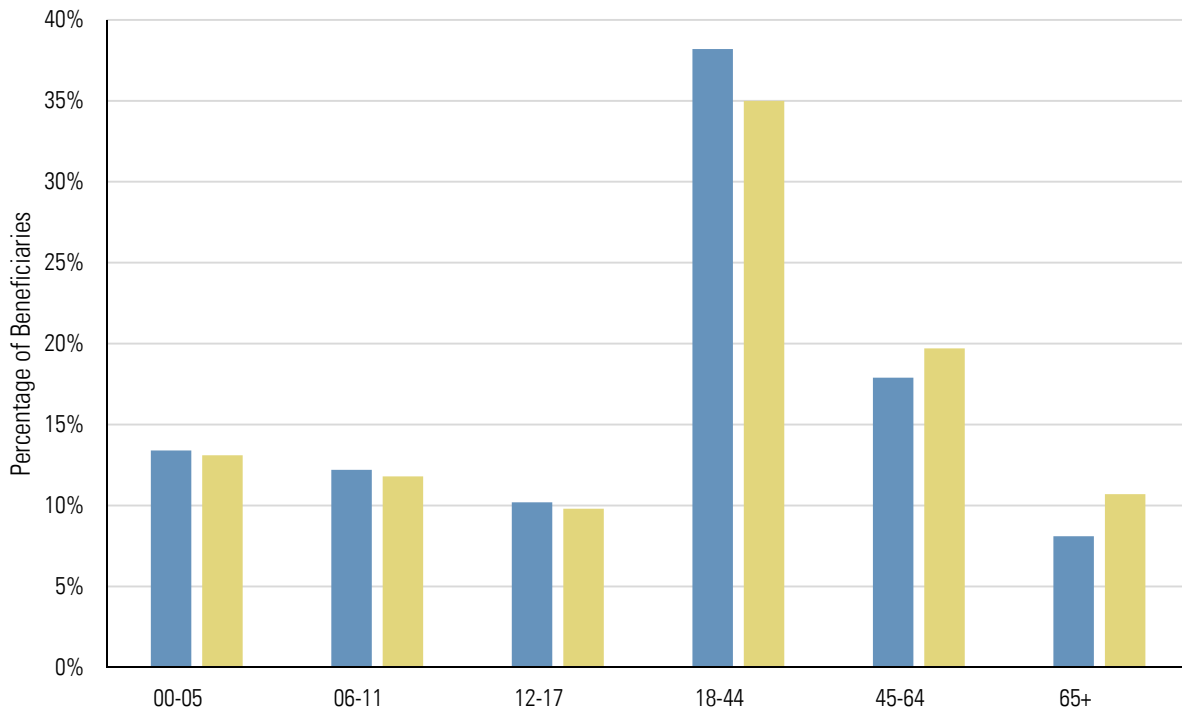
- Fairly small per-capita Medicaid population.
- Lower share of older beneficiaries than the state as a whole.
- Unadjusted inpatient admission rate lower than the statewide average.
- Rate of potentially avoidable hospitalizations (PQIs) for adult acute and chronic conditions better than risk-adjusted expectations (and below statewide averages).
- PQIs for children better than risk-adjusted expectations for acute conditions, but worse than risk-adjusted expectations for chronic conditions, especially short-term diabetes complications.
- More potentially preventable emergency room visits than the risk-adjusted expectation.

Summary Data for Southern Tier

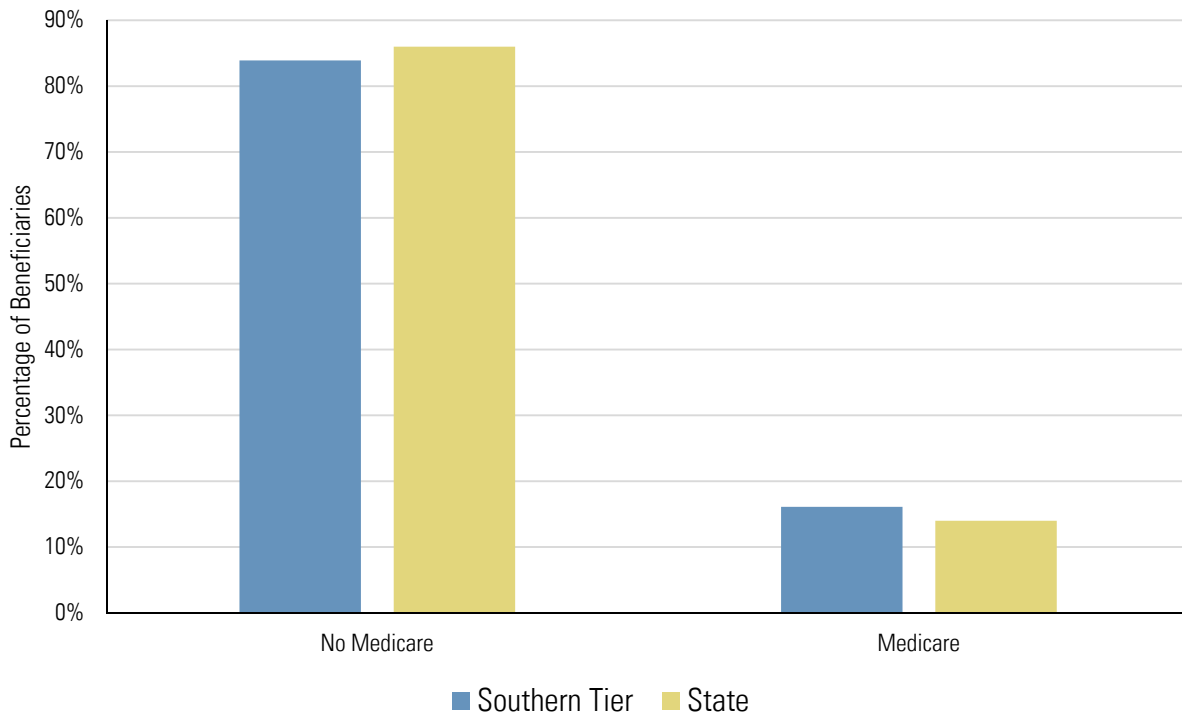
Counties	Broome, Chenango, Delaware, Tioga, Tompkins
Total Population as of July 1, 2013	447,619
Medicaid Beneficiaries with a Claim in 2013	88,707 (19.8% of Total Population)
Medicaid Claims in 2013	3,595,974 (40.5 Claims per Beneficiary)
Medicaid Beneficiaries Enrolled in Managed Care	48,544 (54.7% of Medicaid Beneficiaries)
Mainstream Managed Care Plans	Capital District Physicians Health Plan, Excellus Health Plan, NYS Catholic Health Plan, SCHC Total Care, Today's Options, United Healthcare Plan
Managed Long-Term Care Plans	Fidelis Care at Home
Health Homes in the Region	Catholic Charities of Broome County, Onondaga Case Management Services — Health Homes of Upstate New York — Central, The Mary Imogene Bassett Hospital, United Health Services Hospital

Characteristics of Medicaid Beneficiaries

Medicaid Beneficiaries by Age Group



Medicaid Beneficiaries by Medicare Enrollment Status



Note: Age group and enrollment status are for Medicaid beneficiaries with a claim in 2013.

Diagnosis and Provider Data

Top 25 Diagnostic Categories of All-Payer Inpatient Admissions (2012)

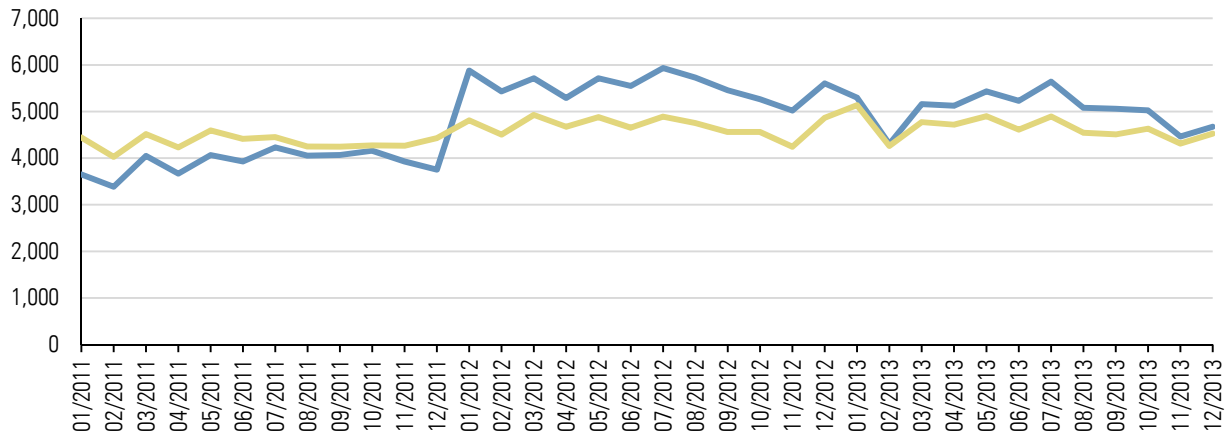
Rank	Diagnosis Category	Number of Discharges	Percent of Discharges	Statewide Percentage
1	Liveborn	4,224	9.35%	9.43%
2	Osteoarthritis	1,628	3.60%	2.05%
3	Septicemia (except in labor)	1,508	3.34%	3.03%
4	Pneumonia (except that caused by tuberculosis or sexually transmitted disease)	1,396	3.09%	2.19%
5	Mood disorders	1,337	2.96%	2.49%
6	Congestive heart failure; nonhypertensive	1,207	2.67%	2.28%
7	Acute myocardial infarction	1,063	2.35%	1.40%
8	Cardiac dysrhythmias	1,006	2.23%	2.02%
9	Chronic obstructive pulmonary disease and bronchiectasis	999	2.21%	1.48%
10	Skin and subcutaneous tissue infections	859	1.90%	1.73%
11	Urinary tract infections	824	1.82%	1.36%
12	Spondylosis; intervertebral disc disorders; other back problems	819	1.81%	1.39%
13	Complication of device; implant or graft	770	1.70%	1.52%
14	Acute cerebrovascular disease	709	1.57%	1.31%
15	Diabetes mellitus with complications	589	1.30%	1.52%
16	Other complications of birth; puerperium affecting management of mother	583	1.29%	1.61%
17	Complications of surgical procedures or medical care	575	1.27%	1.30%
18	Rehabilitation care; fitting of prostheses; and adjustment of devices	568	1.26%	1.33%
19	Substance-related disorders	558	1.24%	1.58%
20	Schizophrenia and other psychotic disorders	555	1.23%	1.69%
21	Coronary atherosclerosis and other heart disease	550	1.22%	1.67%
22	Fluid and electrolyte disorders	540	1.20%	1.15%
23	Previous C-section	526	1.16%	1.16%
24	Alcohol-related disorders	513	1.14%	1.85%
25	OB-related trauma to perineum and vulva	512	1.13%	1.26%
Total of Top 25		24,418	54.05%	49.81%
All Other Diagnoses		20,758	45.95%	50.19%
Total for Region		45,176		

Top Five Inpatient Providers Serving the Region's Medicaid Beneficiaries (2013)

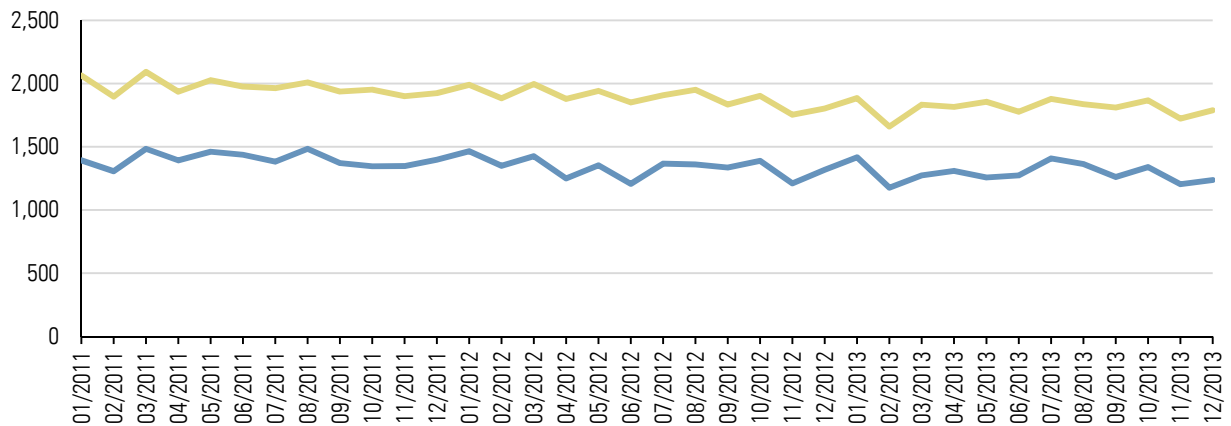
Provider Name	Number of Claims	Number of Unique Patients	Percent of Unique Patients
United Health Services Hospitals, Inc.	7,792	4,145	40.4%
Our Lady of Lourdes Memorial Hospital	3,083	2,152	21.0%
Cayuga Medical Center/Ithaca	1,078	920	9.0%
Mary Imogene Bassett Hospital	889	534	5.2%
Robert Packer Hospital	658	526	5.1%
Total of Top Five Providers	13,500		

Visit Rates (Unadjusted)

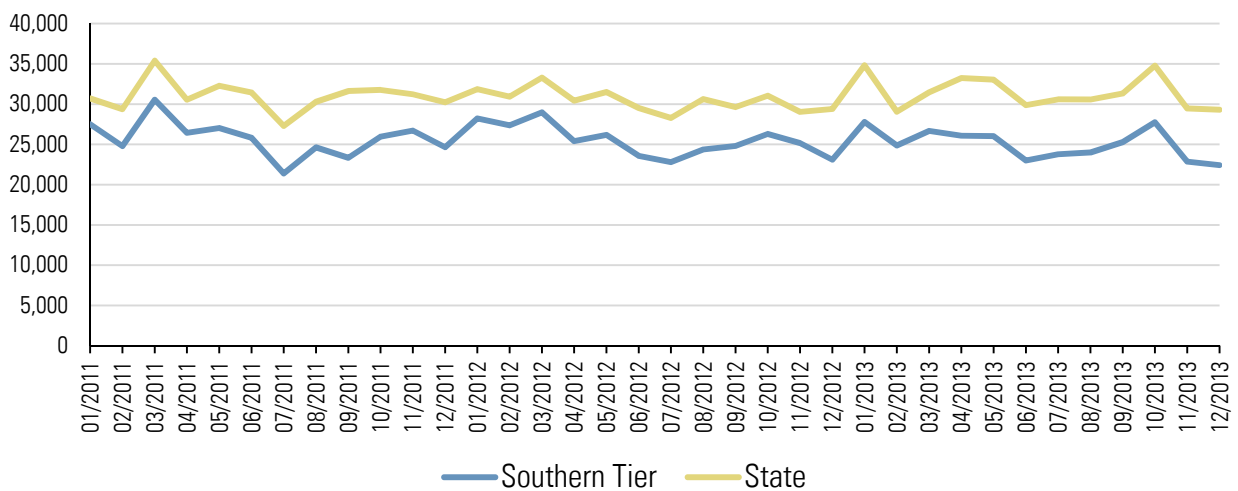
Emergency Room Visit Rate per 100,000 Members



Inpatient Admission Rate per 100,000 Members

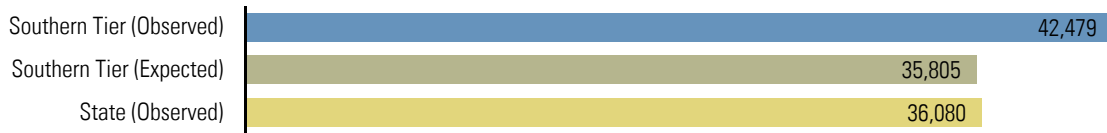


Primary Care Visit Rate per 100,000 Members

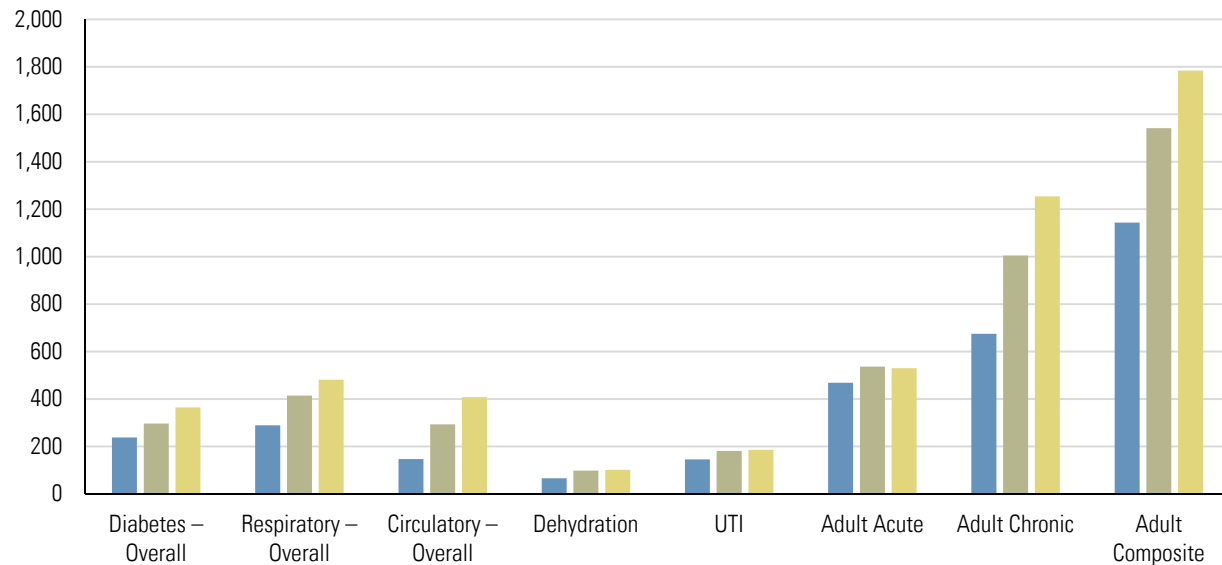


Quality Measures

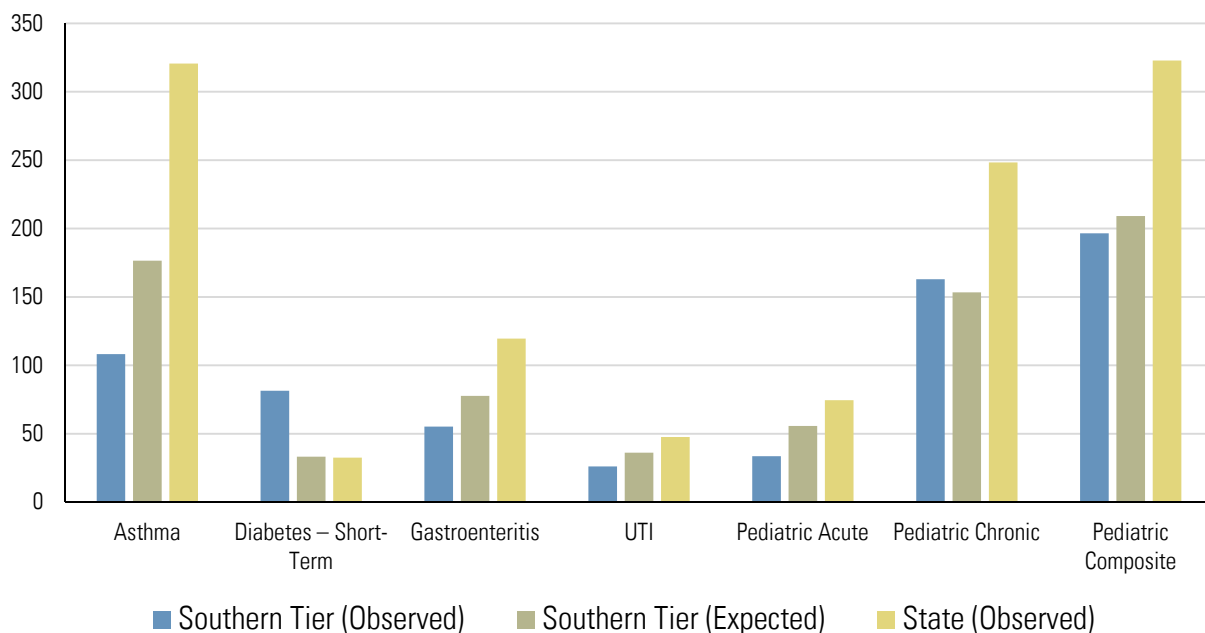
Potentially Preventable Emergency Room Visits (Rate per 100,000 Members)



Prevention Quality Indicators for Adult Discharges (Hospitalization Rate per 100,000 Members)



Prevention Quality Indicators for Pediatric Discharges (Hospitalization Rate per 100,000 Members)



Note: All expected rates are standardized for age, sex, and race/ethnicity. Quality measures are annual rates for 2012.

DSRIP Project Design Grants Awarded in the Region

Provider Name	Counties Served	Total Award	Conditions	Public Hospital
United Health Services Hospitals, Inc.	Broome, Cheung, Chenango, Delaware, Steuben, Tioga	\$495,300	Actively explore merging with 1 or more PPS (Cortland)	