

Medicaid Regional Data Compendium, 2014 Chartbook 14: North Country

This chartbook is part of a broader data compendium from the Medicaid Institute at United Hospital Fund. It presents data on the demographics, service usage, and quality measures for Medicaid beneficiaries from the North Country region. The chartbook is based on data for the Medicaid population residing in the region, regardless of where they receive care; it is not a comprehensive look at care provided in the region. For details on data elements, please see the accompanying methods and sources.

Medicaid Regional Data Compendium, 2014 was prepared by Lee Kennedy-Shaffer and Chad Shearer of the Medicaid Institute at United Hospital Fund. The entire publication is available at www.uhfnyc.org and www.medicaidinstitute.org. Funded by the New York State Department of Health.

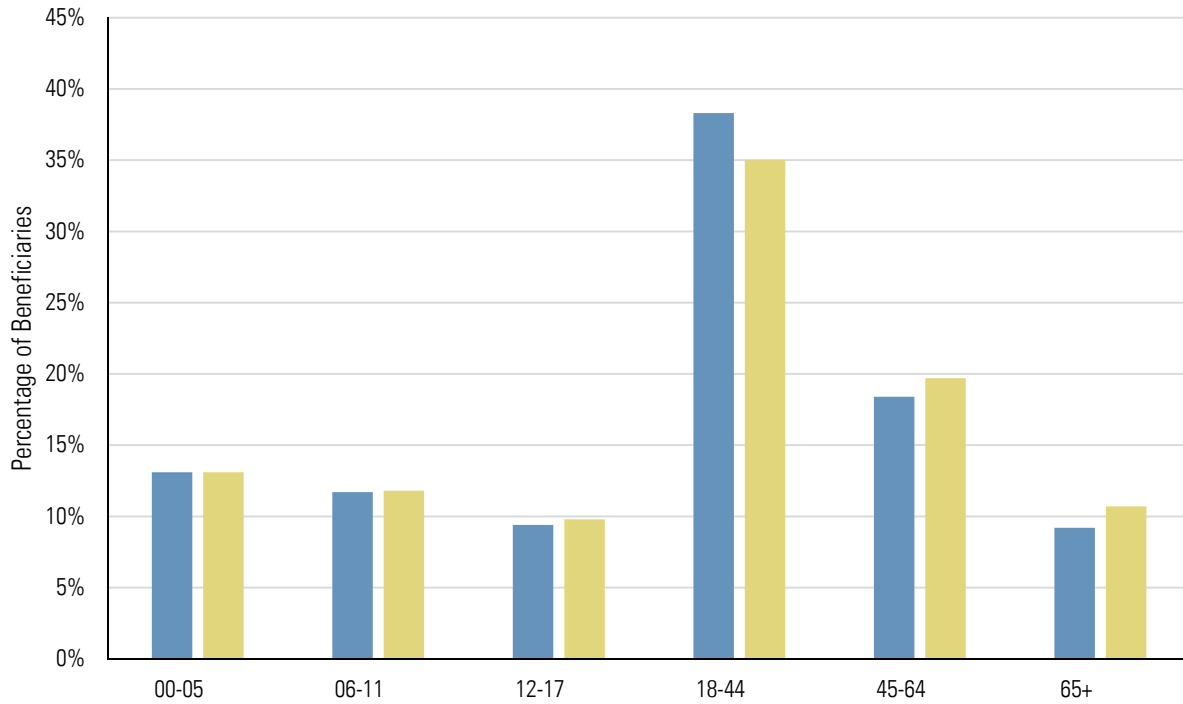
- Fairly small per-capita Medicaid population.
- Lower share of older beneficiaries than the state as a whole.
- Unadjusted inpatient admission rate lower than the statewide average.
- Rate of potentially avoidable hospitalizations (PQIs) for adult acute and chronic conditions better than risk-adjusted expectations (and below statewide averages).
- PQIs for children better than risk-adjusted expectations for all selected indicators, especially short-term diabetes complications.
- More potentially preventable emergency room visits than the risk-adjusted expectation.

Summary Data for North Country

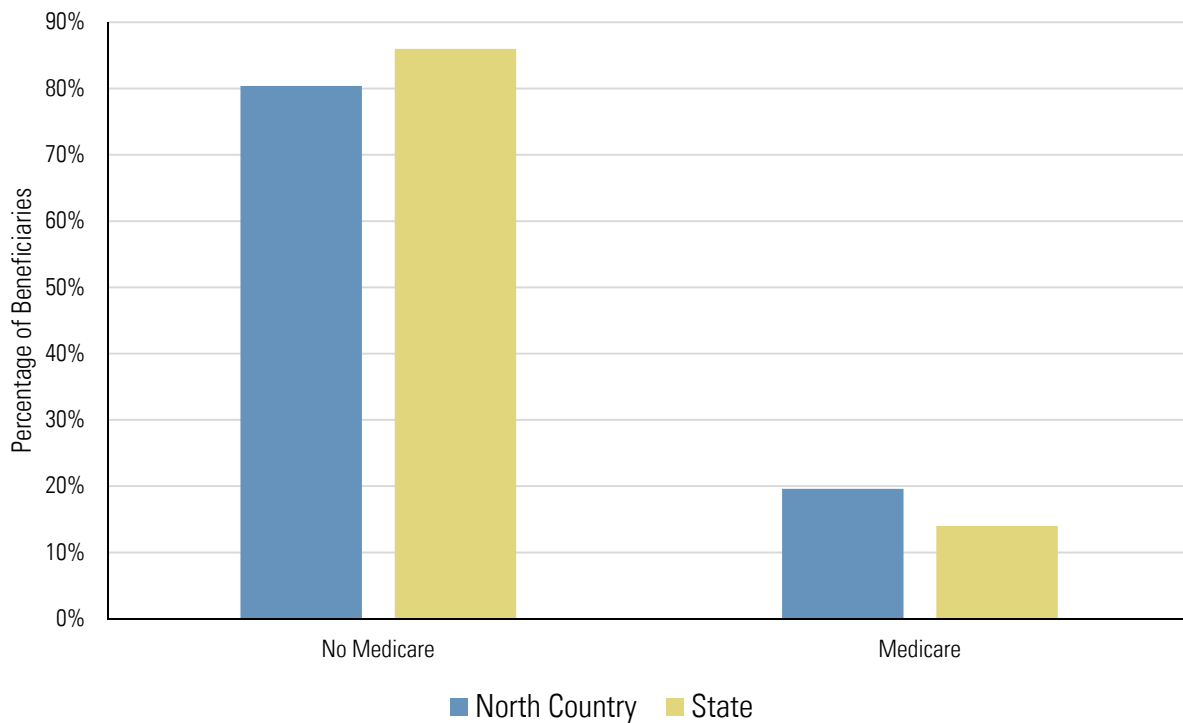
Counties	Clinton, Essex, Franklin, Hamilton, Warren, Washington
Total Population as of July 1, 2013	305,244
Medicaid Beneficiaries with a Claim in 2013	58,812 (19.3% of Total Population)
Medicaid Claims in 2013	2,707,939 (46.0 Claims per Beneficiary)
Medicaid Beneficiaries Enrolled in Managed Care	29,995 (51.0% of Medicaid Beneficiaries)
Mainstream Managed Care Plans	Capital District Physicians Health Plan, NYS Catholic Health Plan, United Healthcare Plan
Managed Long-Term Care Plans	Fidelis Care at Home
Health Homes in the Region	Adirondack Health Institute

Characteristics of Medicaid Beneficiaries

Medicaid Beneficiaries by Age Group



Medicaid Beneficiaries by Medicare Enrollment Status



Note: Age group and enrollment status are for Medicaid beneficiaries with a claim in 2013.

Diagnosis and Provider Data

Top 25 Diagnostic Categories of All-Payer Inpatient Admissions (2012)

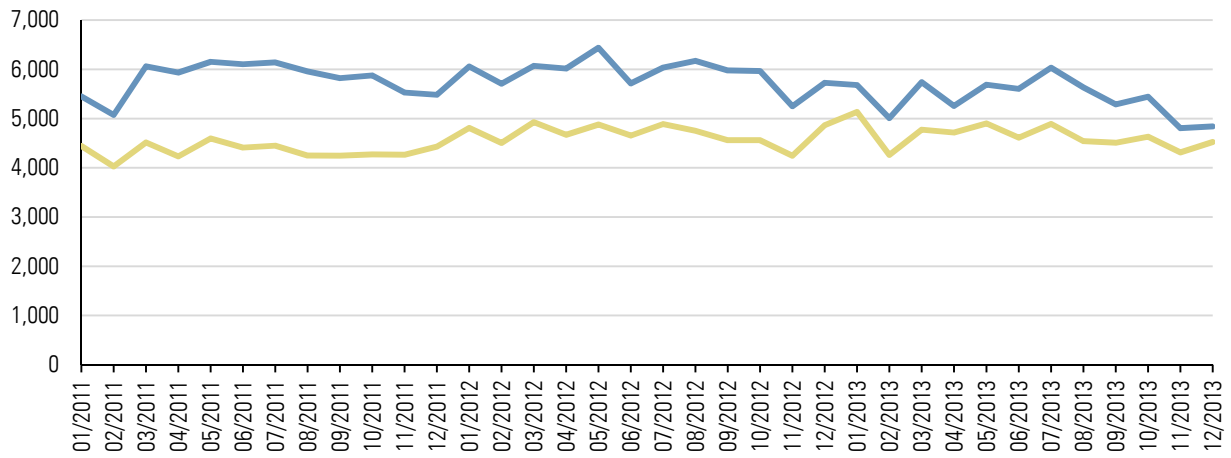
Rank	Diagnosis Category	Number of Discharges	Percent of Discharges	Statewide Percentage
1	Liveborn	2,286	7.66%	9.43%
2	Mood disorders	1,434	4.80%	2.49%
3	Chronic obstructive pulmonary disease and bronchiectasis	937	3.14%	1.48%
4	Osteoarthritis	930	3.12%	2.05%
5	Pneumonia (except that caused by tuberculosis or sexually transmitted disease)	920	3.08%	2.19%
6	Septicemia (except in labor)	916	3.07%	3.03%
7	Congestive heart failure; nonhypertensive	881	2.95%	2.28%
8	Cardiac dysrhythmias	706	2.37%	2.02%
9	Schizophrenia and other psychotic disorders	560	1.88%	1.69%
10	Skin and subcutaneous tissue infections	528	1.77%	1.73%
11	Acute myocardial infarction	524	1.76%	1.40%
12	Complication of device; implant or graft	503	1.69%	1.52%
13	Complications of surgical procedures or medical care	437	1.46%	1.30%
14	Coronary atherosclerosis and other heart disease	419	1.40%	1.67%
15	Urinary tract infections	399	1.34%	1.36%
16	Spondylosis; intervertebral disc disorders; other back problems	392	1.31%	1.39%
17	Other complications of birth; puerperium affecting management of mother	390	1.31%	1.61%
18	Diabetes mellitus with complications	389	1.30%	1.52%
19	Acute cerebrovascular disease	387	1.30%	1.31%
20	Acute and unspecified renal failure	385	1.29%	1.04%
21	Biliary tract disease	384	1.29%	1.16%
22	Diverticulosis and diverticulitis	369	1.24%	0.82%
23	Alcohol-related disorders	359	1.20%	1.85%
24	Intestinal obstruction without hernia	352	1.18%	0.79%
25	Fluid and electrolyte disorders	343	1.15%	1.15%
Total of Top 25		16,130	54.04%	48.27%
All Other Diagnoses		13,718	45.96%	51.73%
Total for Region		29,848		

Top Five Inpatient Providers Serving the Region's Medicaid Beneficiaries (2013)

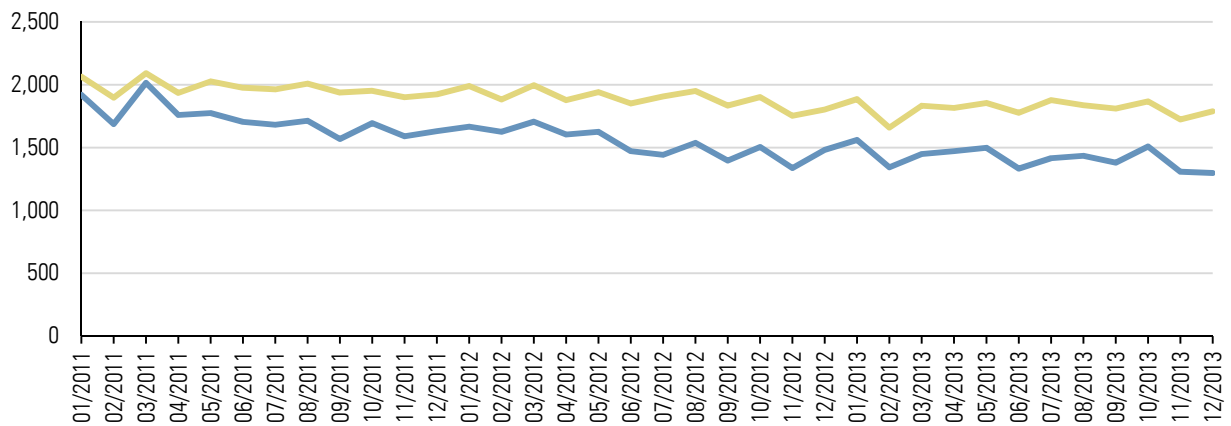
Provider Name	Number of Claims	Number of Unique Patients	Percent of Unique Patients
Glens Falls Hospital	2,935	2,316	31.0%
Champlain Valley Physicians Hospital	2,808	2,287	30.6%
Alice Hyde Medical Center	831	697	9.3%
Fletcher Allen Health Care	594	485	6.5%
Adirondack Medical Center	501	409	5.5%
Total of Top Five Providers	7,669		

Visit Rates (Unadjusted)

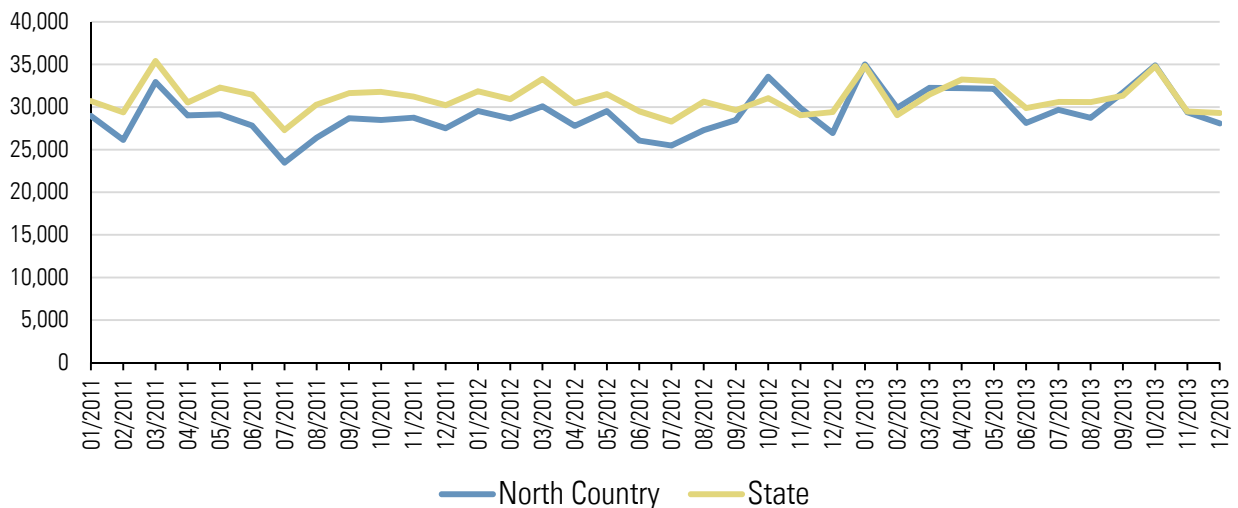
Emergency Room Visit Rate per 100,000 Members



Inpatient Admission Rate per 100,000 Members



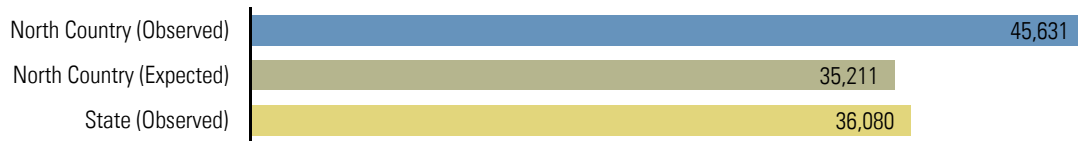
Primary Care Visit Rate per 100,000 Members



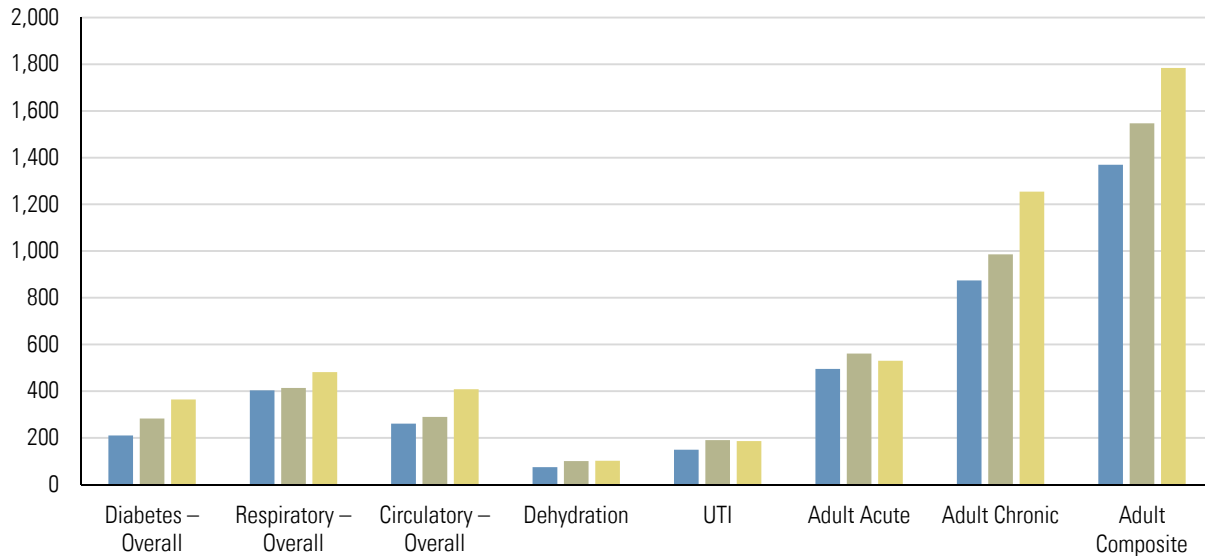
— North Country — State

Quality Measures

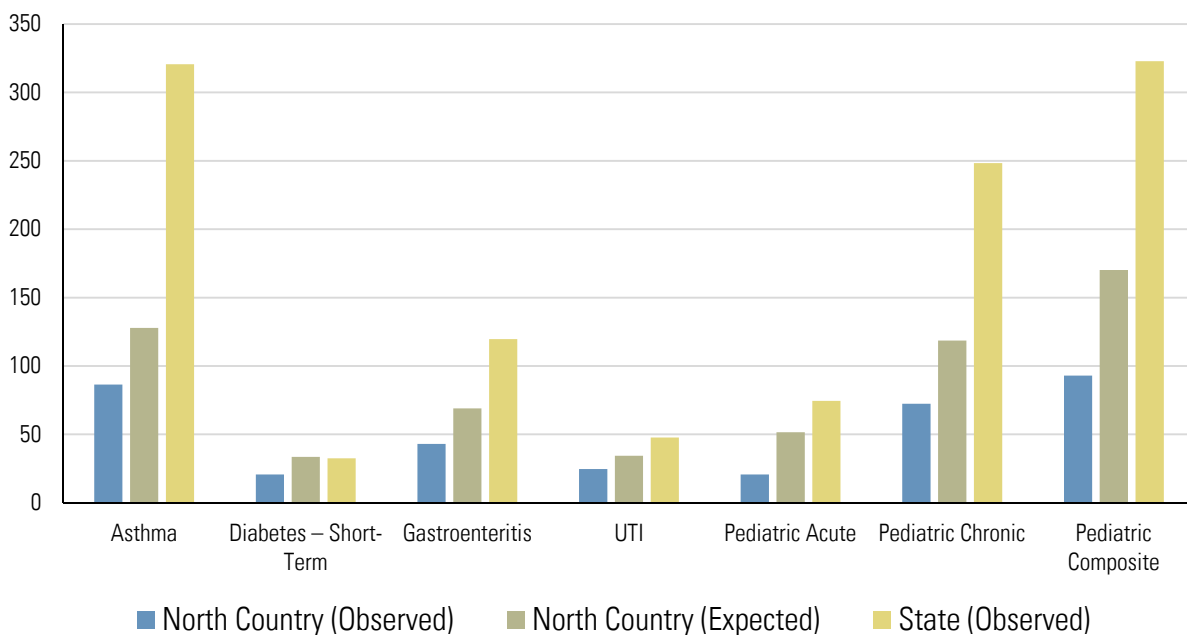
Potentially Preventable Emergency Room Visits (Rate per 100,000 Members)



Prevention Quality Indicators for Adult Discharges (Hospitalization Rate per 100,000 Members)



Prevention Quality Indicators for Pediatric Discharges (Hospitalization Rate per 100,000 Members)



Note: All expected rates are standardized for age, sex, and race/ethnicity. Quality measures are annual rates for 2012.

DSRIP Project Design Grants Awarded in the Region

Provider Name	Counties Served	Total Award	Conditions	Public Hospital
Adirondack Health Institute	Clinton, Essex, Franklin, Fulton, Hamilton, St. Lawrence, Saratoga, Warren, Washington	\$891,000	None at this time	