

Medicaid Regional Data Compendium, 2014 Chartbook 13: Mohawk Valley

This chartbook is part of a broader data compendium from the Medicaid Institute at United Hospital Fund. It presents data on the demographics, service usage, and quality measures for Medicaid beneficiaries from the Mohawk Valley. The chartbook is based on data for the Medicaid population residing in the region, regardless of where they receive care; it is not a comprehensive look at care provided in the region. For details on data elements, please see the accompanying methods and sources.

Medicaid Regional Data Compendium, 2014 was prepared by Lee Kennedy-Shaffer and Chad Shearer of the Medicaid Institute at United Hospital Fund. The entire publication is available at www.uhfny.org and www.medicaidinstitute.org. Funded by the New York State Department of Health.

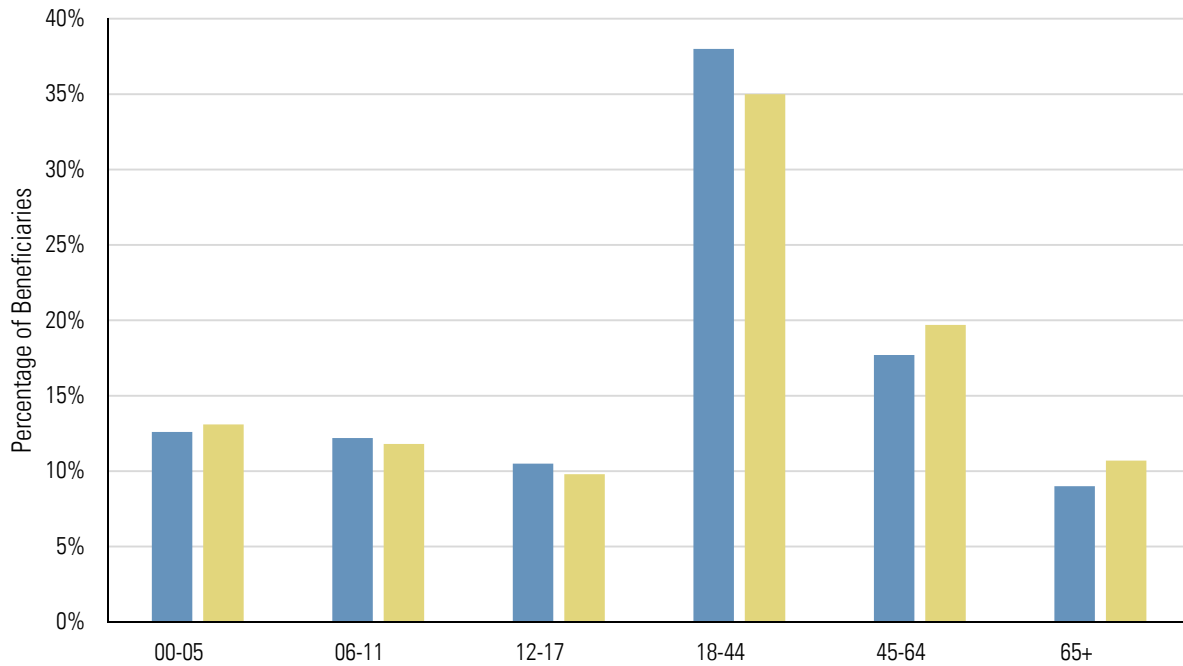
- Average per-capita Medicaid population.
- Lower share of older beneficiaries than the state as a whole.
- Unadjusted inpatient admission rate lower than the statewide average.
- Rate of potentially avoidable hospitalizations (PQIs) for adult acute conditions worse than risk-adjusted expectations (and above statewide averages). PQIs for adult chronic conditions slightly better than risk-adjusted expectations (and below statewide averages).
- PQIs for children better than risk-adjusted expectations for acute conditions. PQIs for pediatrics slightly worse than risk-adjusted expectations for chronic conditions.
- More potentially preventable emergency room visits than the risk-adjusted expectation.

Summary Data for Mohawk Valley

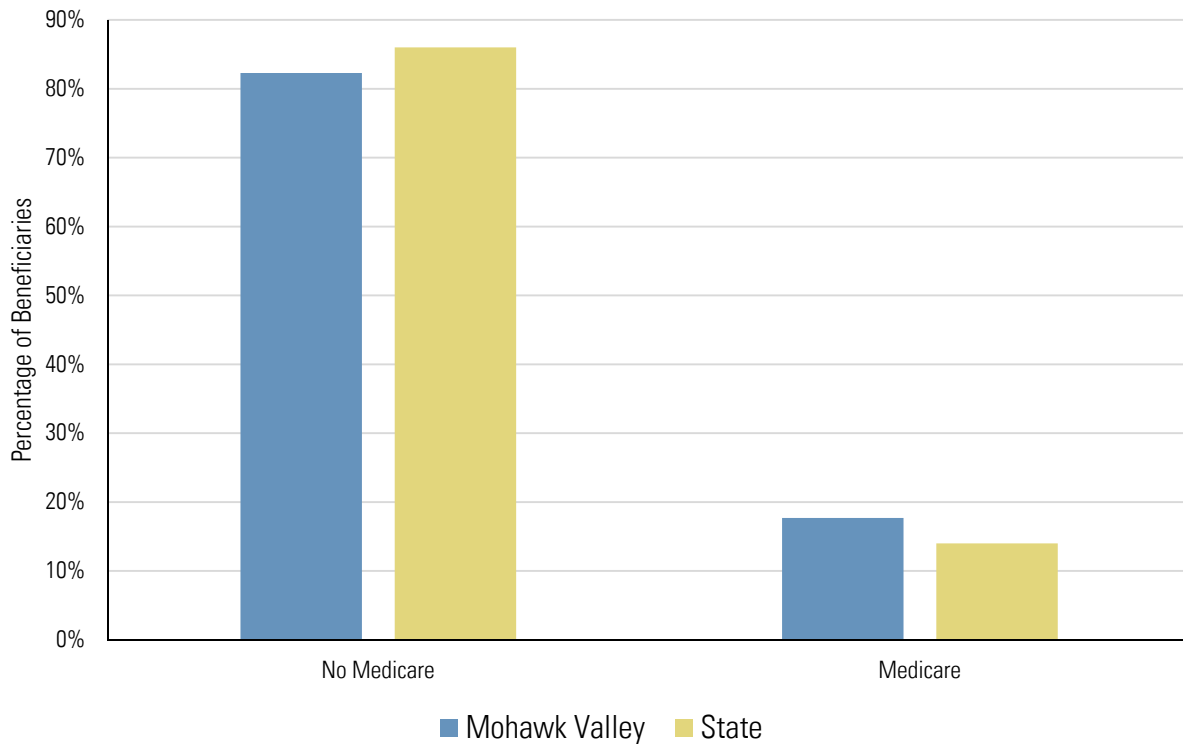
Counties	Fulton, Herkimer, Montgomery, Otsego, Schoharie
Total Population as of July 1, 2013	262,191
Medicaid Beneficiaries with a Claim in 2013	58,866 (22.5% of Total Population)
Medicaid Claims in 2013	2,810,885 (47.8 Claims per Beneficiary)
Medicaid Beneficiaries Enrolled in Managed Care	33,786 (57.4% of Medicaid Beneficiaries)
Mainstream Managed Care Plans	Capital District Physicians Health Plan, Excellus Health Plan, NYS Catholic Health Plan, United Healthcare Plan
Managed Long-Term Care Plans	Fidelis Care at Home, Senior Network Health
Health Homes in the Region	Central New York Health Home Network (CNYHHN), St. Mary's Healthcare, The Mary Imogene Bassett Hospital

Characteristics of Medicaid Beneficiaries

Medicaid Beneficiaries by Age Group



Medicaid Beneficiaries by Medicare Enrollment Status



Note: Age group and enrollment status are for Medicaid beneficiaries with a claim in 2013.

Diagnosis and Provider Data

Top 25 Diagnostic Categories of All-Payer Inpatient Admissions (2012)

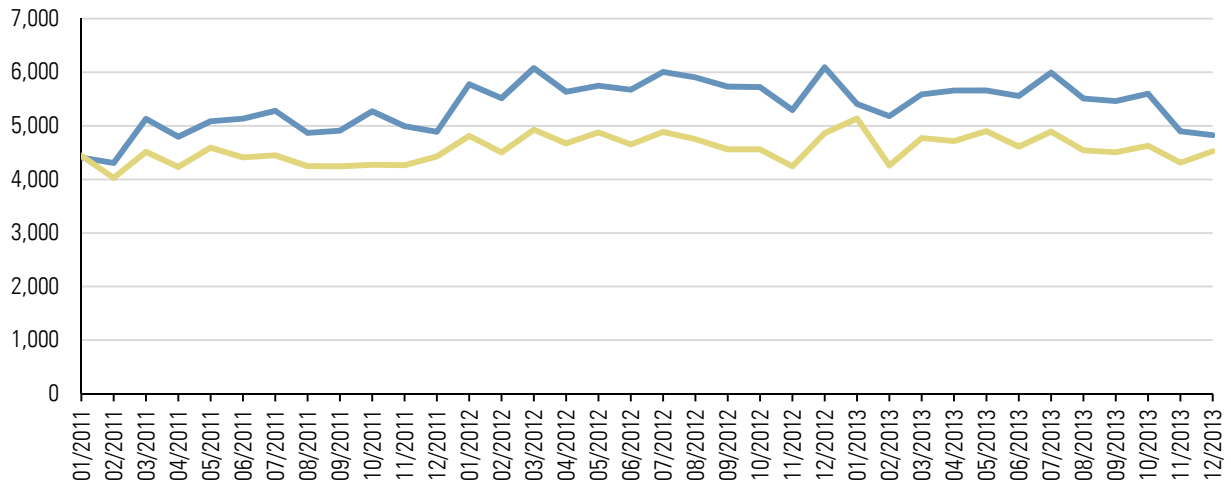
Rank	Diagnosis Category	Number of Discharges	Percent of Discharges	Statewide Percentage
1	Liveborn	2,363	7.49%	9.43%
2	Pneumonia (except that caused by tuberculosis or sexually transmitted disease)	1,233	3.91%	2.19%
3	Osteoarthritis	1,053	3.34%	2.05%
4	Congestive heart failure; nonhypertensive	989	3.13%	2.28%
5	Septicemia (except in labor)	978	3.10%	3.03%
6	Mood disorders	943	2.99%	2.49%
7	Chronic obstructive pulmonary disease and bronchiectasis	850	2.69%	1.48%
8	Cardiac dysrhythmias	675	2.14%	2.02%
9	Acute myocardial infarction	665	2.11%	1.40%
10	Skin and subcutaneous tissue infections	609	1.93%	1.73%
11	Complication of device; implant or graft	546	1.73%	1.52%
12	Spondylosis; intervertebral disc disorders; other back problems	502	1.59%	1.39%
13	Coronary atherosclerosis and other heart disease	447	1.42%	1.67%
14	Urinary tract infections	435	1.38%	1.36%
15	Complications of surgical procedures or medical care	429	1.36%	1.30%
16	Acute cerebrovascular disease	423	1.34%	1.31%
17	OB-related trauma to perineum and vulva	422	1.34%	1.26%
18	Diabetes mellitus with complications	400	1.27%	1.52%
19	Fluid and electrolyte disorders	399	1.26%	1.15%
20	Schizophrenia and other psychotic disorders	386	1.22%	1.69%
21	Alcohol-related disorders	380	1.20%	1.85%
22	Respiratory failure; insufficiency; arrest (adult)	371	1.18%	0.67%
23	Biliary tract disease	364	1.15%	1.16%
24	Other complications of birth; puerperium affecting management of mother	363	1.15%	1.61%
25	Rehabilitation care; fitting of prostheses; and adjustment of devices	363	1.15%	1.33%
Total of Top 25		16,588	52.56%	48.89%
All Other Diagnoses		14,973	47.44%	51.11%
Total for Region		31,561		

Top Five Inpatient Providers Serving the Region's Medicaid Beneficiaries (2013)

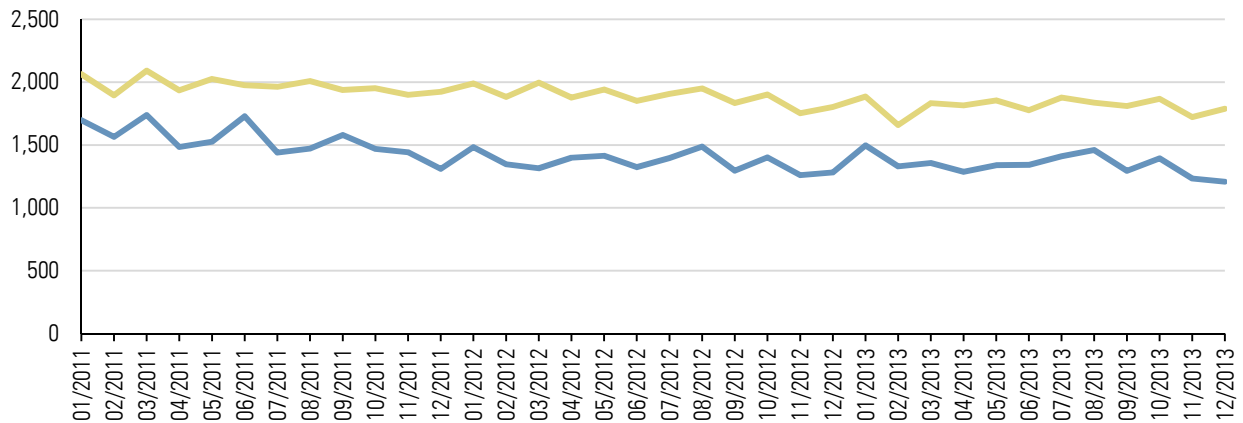
Provider Name	Number of Claims	Number of Unique Patients	Percent of Unique Patients
Mary Imogene Bassett Hospital	2,652	1,537	21.6%
St. Mary's Hospital, Amsterdam	1,793	1,407	19.8%
Nathan Littauer Hospital	1,194	1,033	14.5%
Albany Medical Center Hospital	1,479	744	10.5%
Faxton-St. Luke's Healthcare	1,254	729	10.2%
Total of Top Five Providers	8,372		

Visit Rates (Unadjusted)

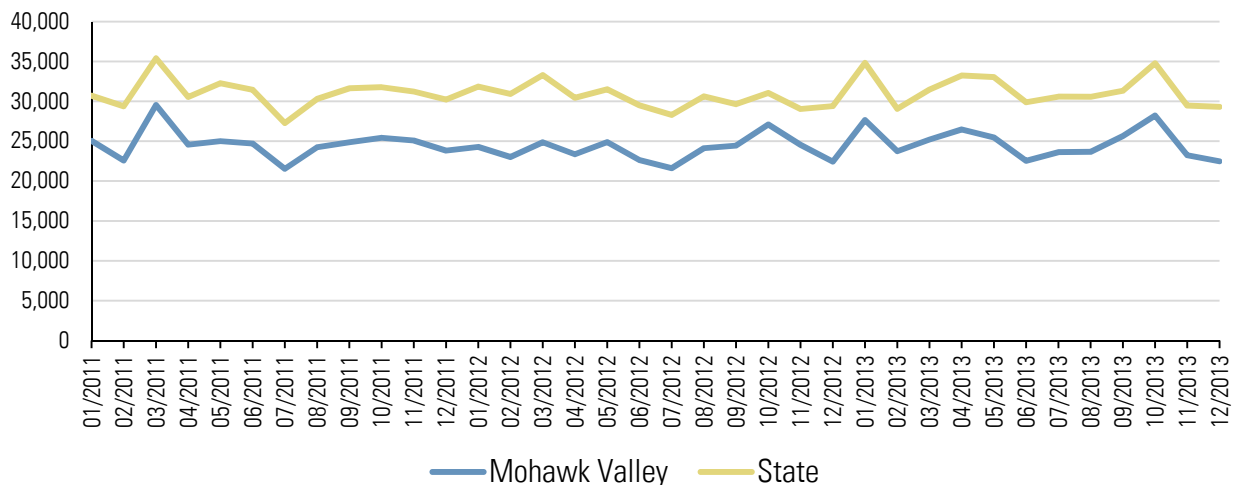
Emergency Room Visit Rate per 100,000 Members



Inpatient Admission Rate per 100,000 Members



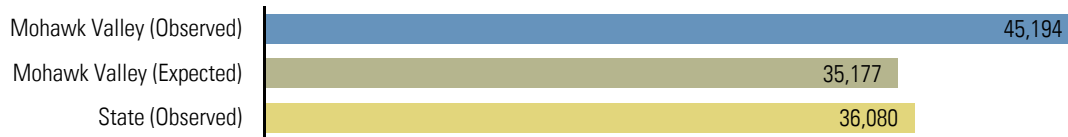
Primary Care Visit Rate per 100,000 Members



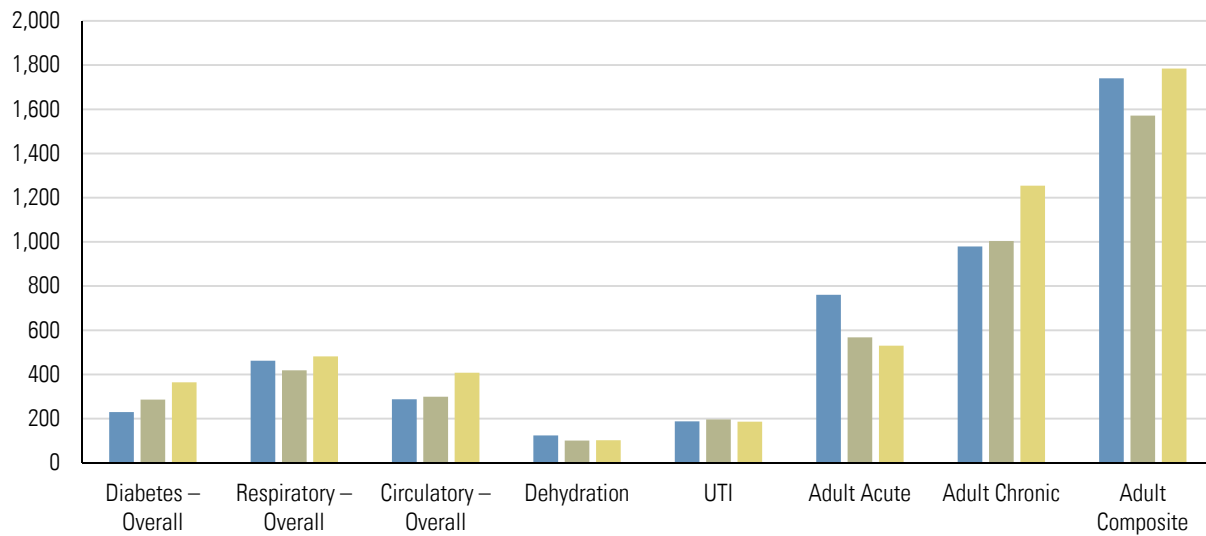
— Mohawk Valley — State

Quality Measures

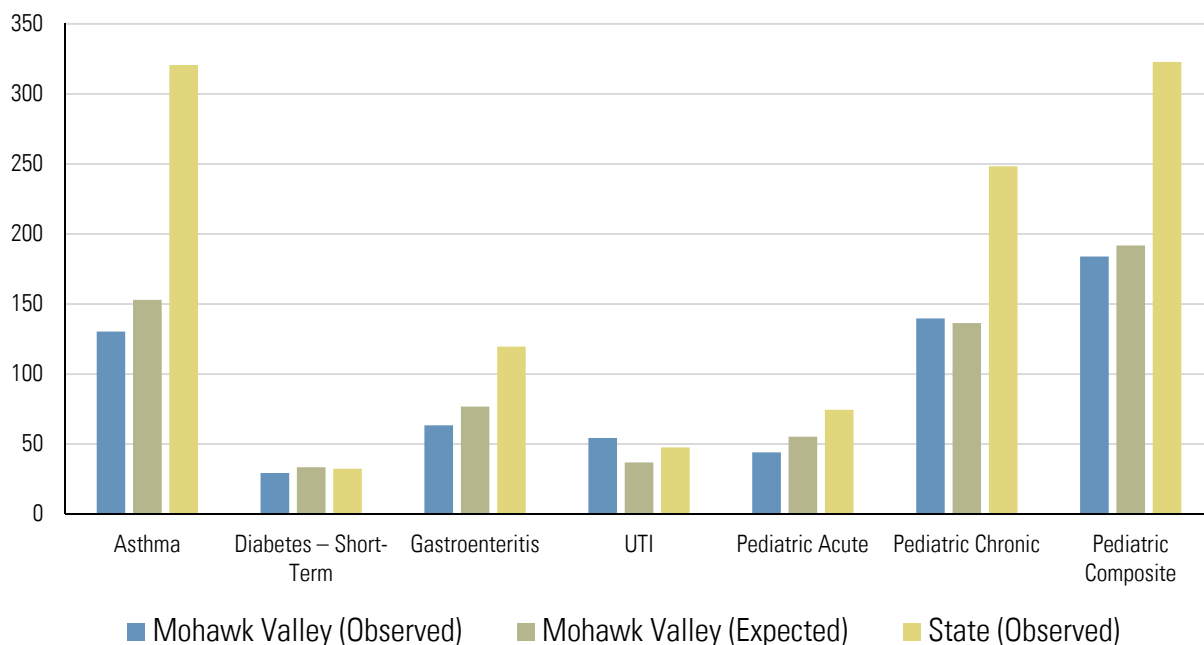
Potentially Preventable Emergency Room Visits (Rate per 100,000 Members)



Prevention Quality Indicators for Adult Discharges (Hospitalization Rate per 100,000 Members)



Prevention Quality Indicators for Pediatric Discharges (Hospitalization Rate per 100,000 Members)



Note: All expected rates are standardized for age, sex, and race/ethnicity. Quality measures are annual rates for 2012.

DSRIP Project Design Grants Awarded in the Region

Provider Name	Counties Served	Total Award	Conditions	Public Hospital
Mary Imogene Bassett Hospital	Chenango, Delaware, Herkimer, Madison, Oneida, Otsego, Schoharie	\$760,000	Actively explore joining 1 or more PPS (Faxton St. Luke's)	