

Medicaid Regional Data Compendium, 2014 Chartbook 11: Long Island

This chartbook is part of a broader data compendium from the Medicaid Institute at United Hospital Fund. It presents data on the demographics, service usage, and quality measures for Medicaid beneficiaries from Long Island. The chartbook is based on data for the Medicaid population residing in the region, regardless of where they receive care; it is not a comprehensive look at care provided in the region. For details on data elements, please see the accompanying methods and sources.

Medicaid Regional Data Compendium, 2014 was prepared by Lee Kennedy-Shaffer and Chad Shearer of the Medicaid Institute at United Hospital Fund. The entire publication is available at www.uhfny.org and www.medicicaidinstitute.org. Funded by the New York State Department of Health.

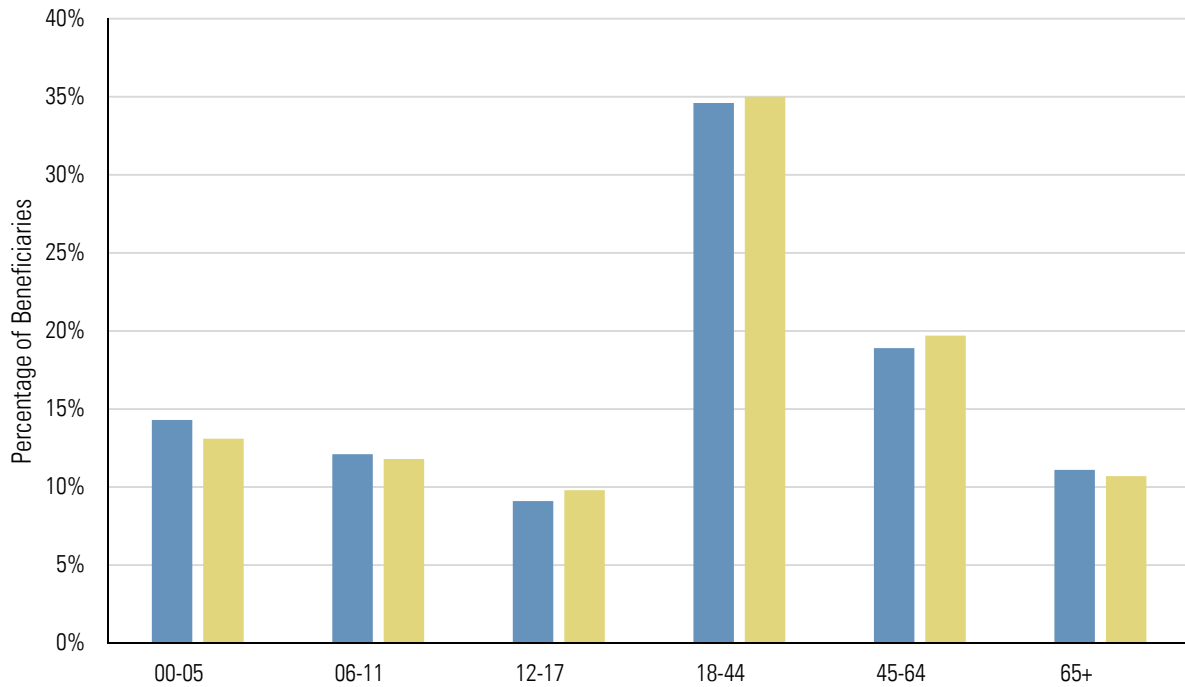
- Very small per-capita Medicaid population.
- Higher share of youngest beneficiaries than the state as a whole.
- Unadjusted inpatient admission rate in line with the statewide average.
- Rate of potentially avoidable hospitalizations (PQIs) for adult acute conditions slightly worse than risk-adjusted expectations (and above statewide averages). PQIs for adult chronic conditions slightly better than risk-adjusted expectations (and below statewide averages).
- PQIs for children better than risk-adjusted expectations for acute and chronic conditions, although worse than expectations for UTI admissions and short-term diabetes complications.
- Fewer potentially preventable emergency room visits than the risk-adjusted expectation.

Summary Data for Long Island

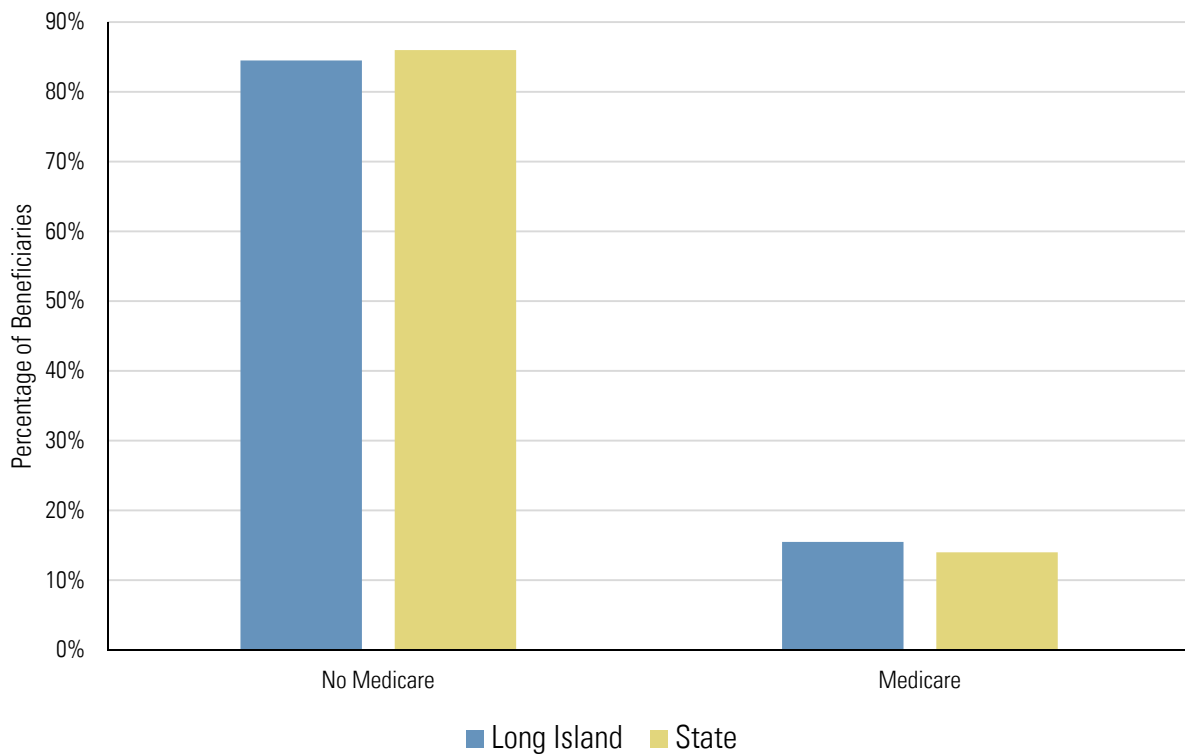
Counties	Nassau, Suffolk
Total Population as of July 1, 2013	2,851,884
Medicaid Beneficiaries with a Claim in 2013	394,674 (13.8% of Total Population)
Medicaid Claims in 2013	21,618,982 (54.8 Claims per Beneficiary)
Medicaid Beneficiaries Enrolled in Managed Care	247,488 (62.7% of Medicaid Beneficiaries)
Mainstream Managed Care Plans: Affinity Health Plan, Amerigroup, HealthFirst PHSP, HIP of Greater New York, NYS Catholic Health Plan, United Healthcare Plan	
Managed Long-Term Care Plans: Aetna Better Health, AgeWell New York, CCM Select, Comprehensive Care Management, ElderPlan, ElderServe, Extended MLTC, Fidelis Care at Home, GuildNet, HIP of Greater New York, Integra, North Shore-LIJ Health Plan, Senior Health Partners, VNS Choice, WellCare	
Health Homes in the Region: FECS Health & Human Services System, Hudson River Healthcare dba CommunityHealth Care Collaborative (CCC), North Shore Long Island Jewish Health Home	

Characteristics of Medicaid Beneficiaries

Medicaid Beneficiaries by Age Group



Medicaid Beneficiaries by Medicare Enrollment Status



Note: Age group and enrollment status are for Medicaid beneficiaries with a claim in 2013.

Diagnosis and Provider Data

Top 25 Diagnostic Categories of All-Payer Inpatient Admissions (2012)

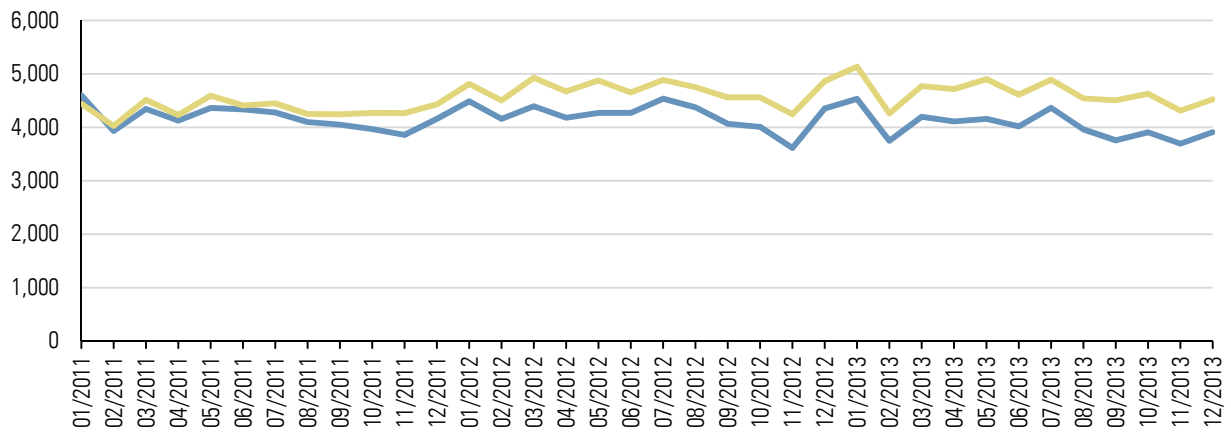
Rank	Diagnosis Category	Number of Discharges	Percent of Discharges	Statewide Percentage
1	Liveborn	29,340	8.06%	9.43%
2	Septicemia (except in labor)	10,857	2.98%	3.03%
3	Cardiac dysrhythmias	9,612	2.64%	2.02%
4	Nonspecific chest pain	8,461	2.32%	1.93%
5	Congestive heart failure; nonhypertensive	8,398	2.31%	2.28%
6	Osteoarthritis	8,136	2.23%	2.05%
7	Mood disorders	7,902	2.17%	2.49%
8	Pneumonia (except that caused by tuberculosis or sexually transmitted disease)	7,808	2.14%	2.19%
9	Skin and subcutaneous tissue infections	7,151	1.96%	1.73%
10	Coronary atherosclerosis and other heart disease	7,034	1.93%	1.67%
11	Complication of device; implant or graft	6,264	1.72%	1.52%
12	Spondylosis; intervertebral disc disorders; other back problems	6,257	1.72%	1.39%
13	Rehabilitation care; fitting of prostheses; and adjustment of devices	6,018	1.65%	1.33%
14	Acute myocardial infarction	5,844	1.61%	1.40%
15	Chronic obstructive pulmonary disease and bronchiectasis	5,692	1.56%	1.48%
16	Urinary tract infections	5,325	1.46%	1.36%
17	Complications of surgical procedures or medical care	5,323	1.46%	1.30%
18	Biliary tract disease	5,027	1.38%	1.16%
19	Syncope	4,893	1.34%	0.98%
20	Previous C-section	4,887	1.34%	1.16%
21	Other complications of birth; puerperium affecting management of mother	4,819	1.32%	1.61%
22	OB-related trauma to perineum and vulva	4,797	1.32%	1.26%
23	Substance-related disorders	4,758	1.31%	1.58%
24	Acute cerebrovascular disease	4,585	1.26%	1.31%
25	Fluid and electrolyte disorders	4,395	1.21%	1.15%
Total of Top 25		183,583	50.43%	48.81%
All Other Diagnoses		180,452	49.57%	51.19%
Total for Region		364,035		

Top Five Inpatient Providers Serving the Region's Medicaid Beneficiaries (2013)

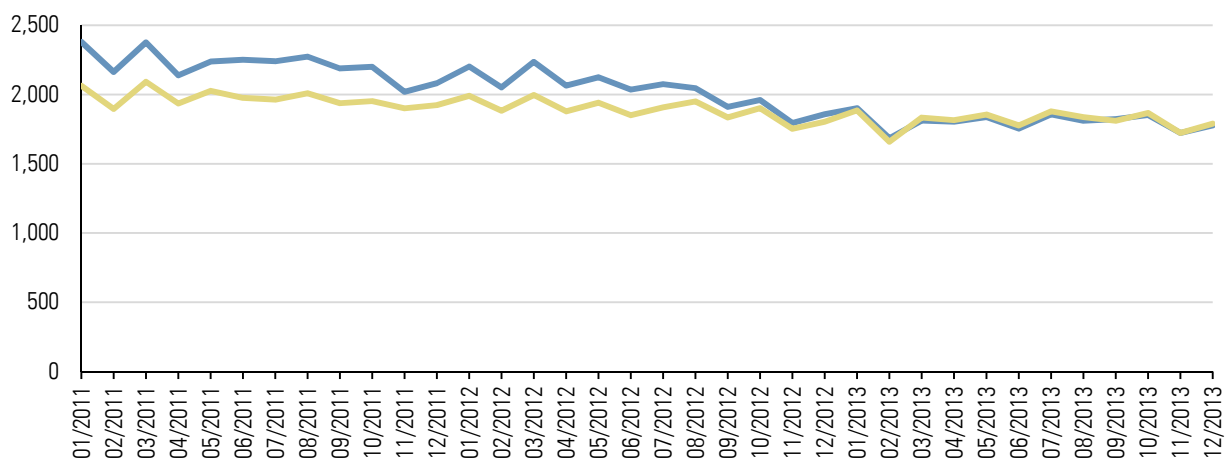
Provider Name	Number of Claims	Number of Unique Patients	Percent of Unique Patients
Nassau University Medical Center	15,308	8,114	13.8%
Stony Brook University Hospital	15,244	7,753	13.2%
Southside Hospital	11,047	5,963	10.1%
Winthrop-University Hospital	10,844	5,401	9.2%
Good Samaritan Hospital Medical Center	9,617	4,980	8.5%
Total of Top Five Providers	62,060		

Visit Rates (Unadjusted)

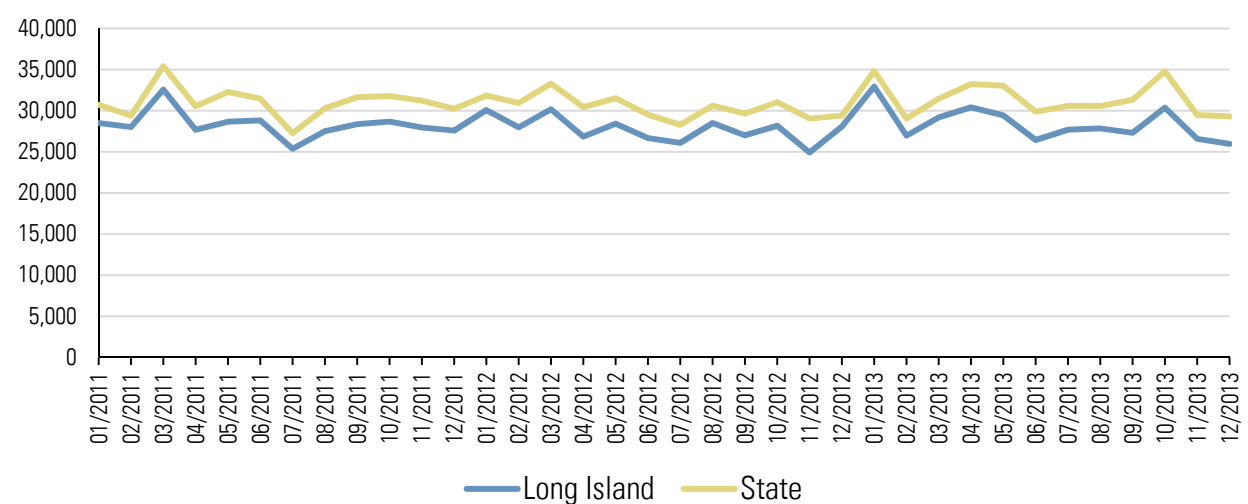
Emergency Room Visit Rate per 100,000 Members



Inpatient Admission Rate per 100,000 Members



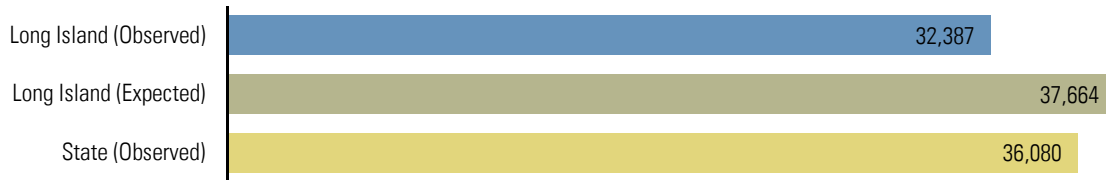
Primary Care Visit Rate per 100,000 Members



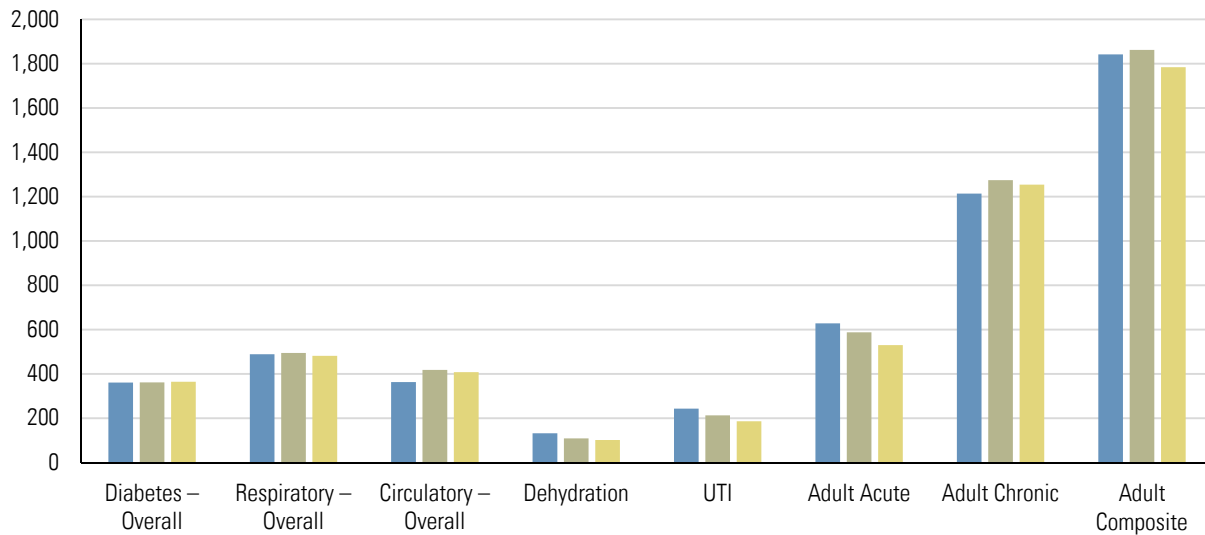
— Long Island — State

Quality Measures

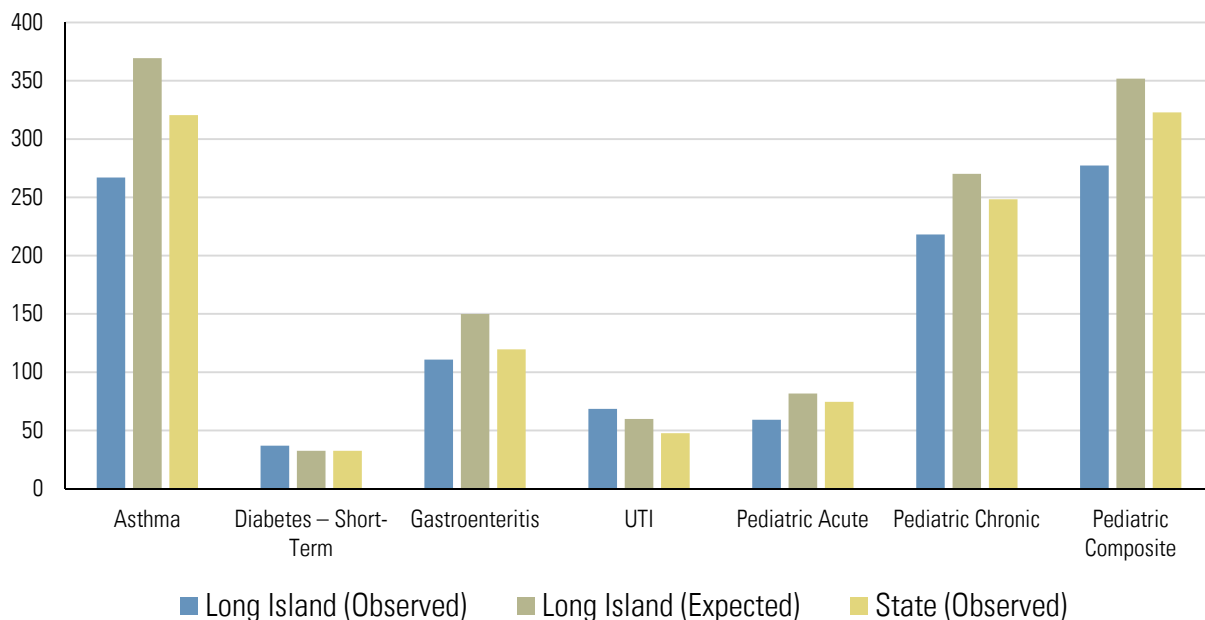
Potentially Preventable Emergency Room Visits (Rate per 100,000 Members)



Prevention Quality Indicators for Adult Discharges (Hospitalization Rate per 100,000 Members)



Prevention Quality Indicators for Pediatric Discharges (Hospitalization Rate per 100,000 Members)



Note: All expected rates are standardized for age, sex, and race/ethnicity. Quality measures are annual rates for 2012.

DSRIP Project Design Grants Awarded in the Region

Provider Name	Counties Served	Total Award	Conditions	Public Hospital
Catholic Health Services of Long Island	Nassau, Queens	\$500,000	None at this time	
Long Island Jewish Medical Center	Nassau, Queens	\$500,000	None at this time	
Nassau University Medical Center	Nassau	\$1,000,000	Demonstrate an institutional capacity to serve as a PPS lead	✓
Stony Brook University Hospital	Suffolk	\$333,333	None at this time	✓