

Medicaid Regional Data Compendium, 2014 Chartbook 9: Central New York

This chartbook is part of a broader data compendium from the Medicaid Institute at United Hospital Fund. It presents data on the demographics, service usage, and quality measures for Medicaid beneficiaries from Central New York. The chartbook is based on data for the Medicaid population residing in the region, regardless of where they receive care; it is not a comprehensive look at care provided in the region. For details on data elements, please see the accompanying methods and sources.

Medicaid Regional Data Compendium, 2014 was prepared by Lee Kennedy-Shaffer and Chad Shearer of the Medicaid Institute at United Hospital Fund. The entire publication is available at www.uhfnyc.org and www.medicaidinstitute.org. Funded by the New York State Department of Health.

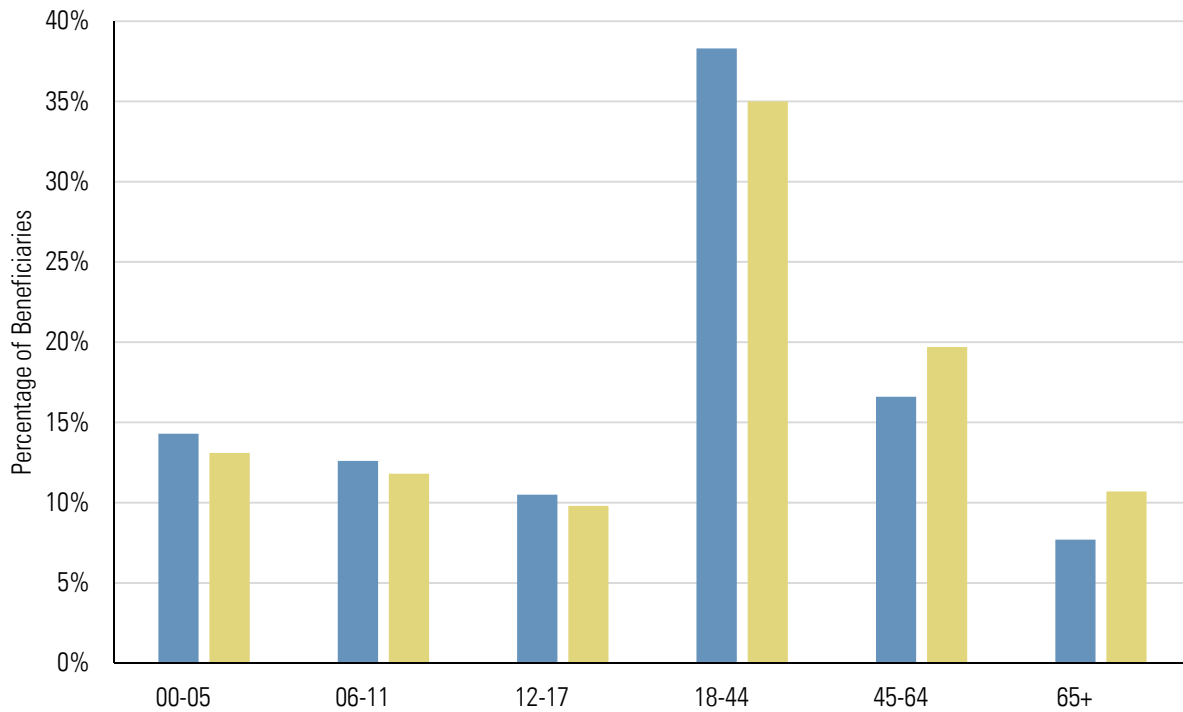
- Average per-capita Medicaid population.
- Higher share of younger beneficiaries and lower share of older beneficiaries than the state as a whole.
- Unadjusted inpatient admission rate lower than the statewide average.
- Rate of potentially avoidable hospitalizations (PQIs) for adult acute conditions and adult chronic conditions worse than risk-adjusted expectations.
- PQIs for children better than risk-adjusted expectations for most selected indicators, especially asthma.
- More potentially preventable emergency room visits than the risk-adjusted expectation.

Summary Data for Central New York

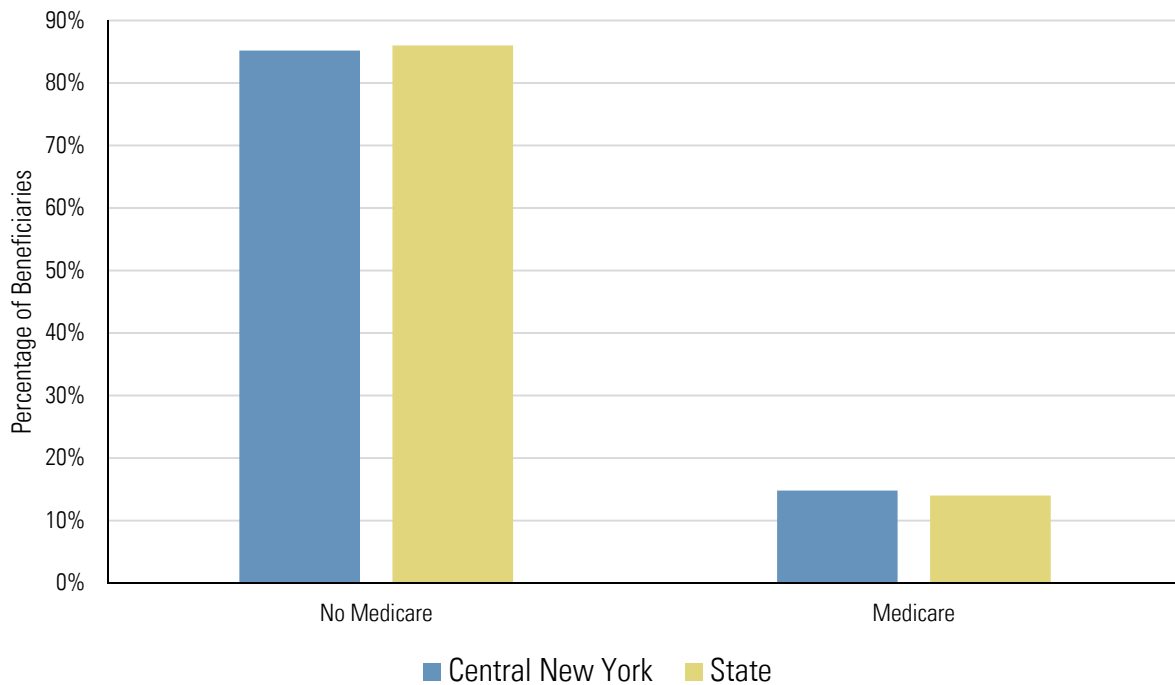
Counties	Cayuga, Cortland, Madison, Oneida, Onondaga, Oswego
Total Population as of July 1, 2013	1,023,972
Medicaid Beneficiaries with a Claim in 2013	220,405 (21.5% of Total Population)
Medicaid Claims in 2013	10,331,933 (46.9 Claims per Beneficiary)
Medicaid Beneficiaries Enrolled in Managed Care	135,436 (61.4% of Medicaid Beneficiaries)
Mainstream Managed Care Plans	Excellus Health Plan, NYS Catholic Health Plan, SCHC Total Care, Today's Options, United Healthcare Plan
Managed Long-Term Care Plans	Fidelis Care at Home, PACE CNY, Senior Network Health, VNA Healthcare Options
Health Homes in the Region	Central New York Health Home Network (CNYHHN), Onondaga Case Management Services — Health Homes of Upstate New York — Central, St. Joseph's Hospital Health Center dba St. Joseph's Care Coordination Network (SJCCN)

Characteristics of Medicaid Beneficiaries

Medicaid Beneficiaries by Age Group



Medicaid Beneficiaries by Medicare Enrollment Status



Note: Age group and enrollment status are for Medicaid beneficiaries with a claim in 2013.

Diagnosis and Provider Data

Top 25 Diagnostic Categories of All-Payer Inpatient Admissions (2012)

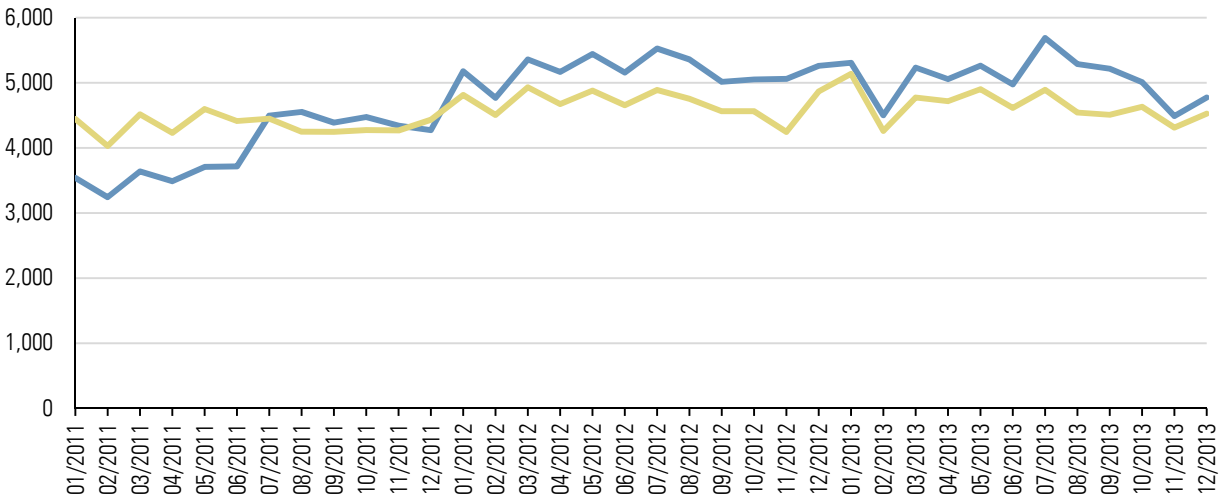
Rank	Diagnosis Category	Number of Discharges	Percent of Discharges	Statewide Percentage
1	Liveborn	11,164	8.90%	9.43%
2	Pneumonia (except that caused by tuberculosis or sexually transmitted disease)	3,767	3.00%	2.19%
3	Mood disorders	3,716	2.96%	2.49%
4	Osteoarthritis	3,706	2.95%	2.05%
5	Congestive heart failure; nonhypertensive	3,348	2.67%	2.28%
6	Septicemia (except in labor)	2,984	2.38%	3.03%
7	Chronic obstructive pulmonary disease and bronchiectasis	2,793	2.23%	1.48%
8	Cardiac dysrhythmias	2,462	1.96%	2.02%
9	Skin and subcutaneous tissue infections	2,315	1.84%	1.73%
10	Complication of device; implant or graft	2,301	1.83%	1.52%
11	Acute myocardial infarction	2,145	1.71%	1.40%
12	Coronary atherosclerosis and other heart disease	1,987	1.58%	1.67%
13	Spondylosis; intervertebral disc disorders; other back problems	1,890	1.51%	1.39%
14	Schizophrenia and other psychotic disorders	1,823	1.45%	1.69%
15	Urinary tract infections	1,819	1.45%	1.36%
16	Acute cerebrovascular disease	1,815	1.45%	1.31%
17	Complications of surgical procedures or medical care	1,779	1.42%	1.30%
18	Other complications of pregnancy	1,758	1.40%	1.34%
19	Fluid and electrolyte disorders	1,733	1.38%	1.15%
20	Diabetes mellitus with complications	1,685	1.34%	1.52%
21	Other complications of birth; puerperium affecting management of mother	1,627	1.30%	1.61%
22	Alcohol-related disorders	1,542	1.23%	1.85%
23	Biliary tract disease	1,503	1.20%	1.16%
24	Nonspecific chest pain	1,451	1.16%	1.93%
25	OB-related trauma to perineum and vulva	1,388	1.11%	1.26%
Total of Top 25		64,501	51.40%	50.15%
All Other Diagnoses		60,992	48.60%	49.85%
Total for Region		125,493		

Top Five Inpatient Providers Serving the Region's Medicaid Beneficiaries (2013)

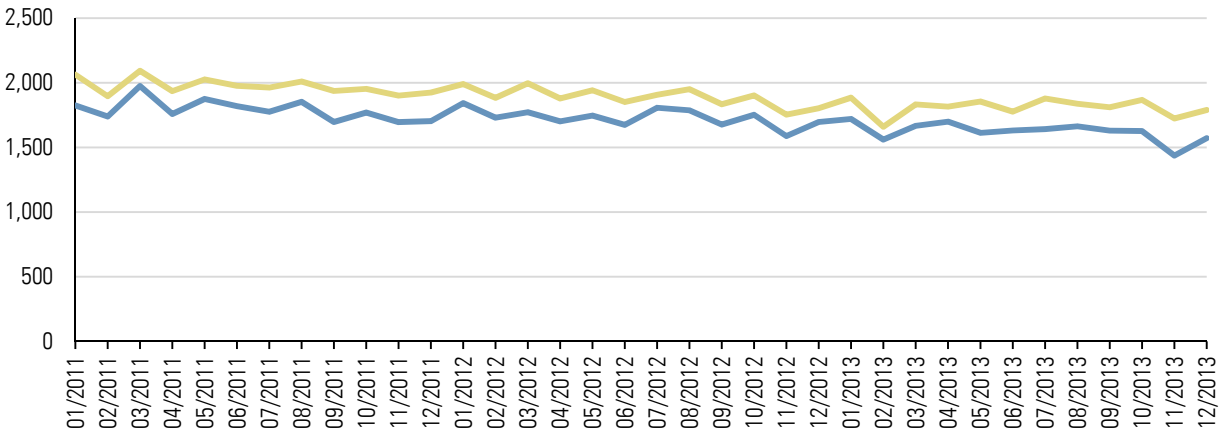
Provider Name	Number of Claims	Number of Unique Patients	Percent of Unique Patients
Upstate University Hospital	12,659	6,027	21.2%
Crouse Hospital	10,280	5,648	19.9%
St. Joseph's Hospital Health Center	8,688	4,879	17.2%
Faxton-St. Luke's Healthcare	6,846	3,951	13.9%
Oswego Hospital	2,472	1,906	6.7%
Total of Top Five Providers	40,945		

Visit Rates (Unadjusted)

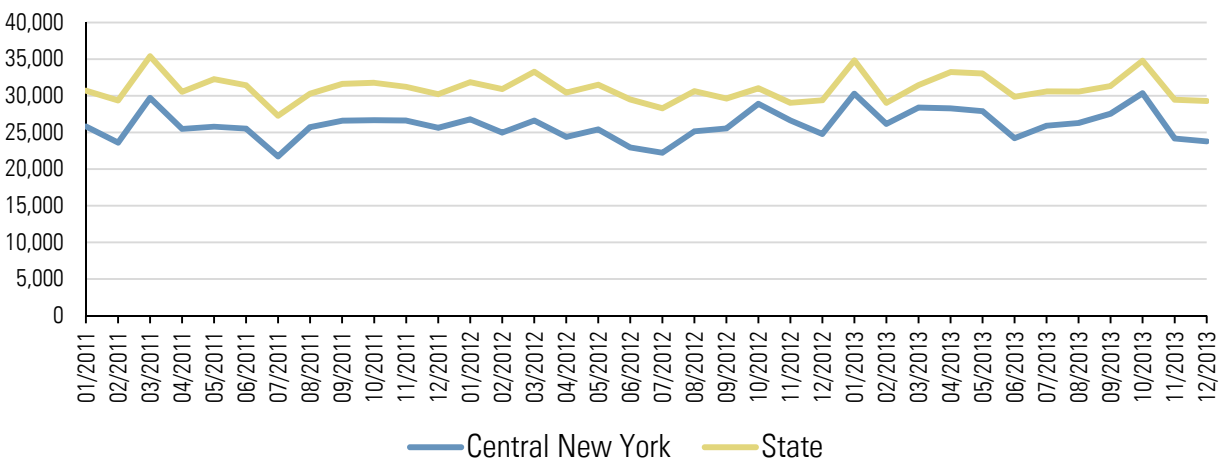
Emergency Room Visit Rate per 100,000 Members



Inpatient Admission Rate per 100,000 Members



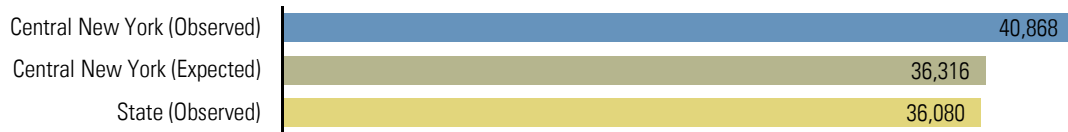
Primary Care Visit Rate per 100,000 Members



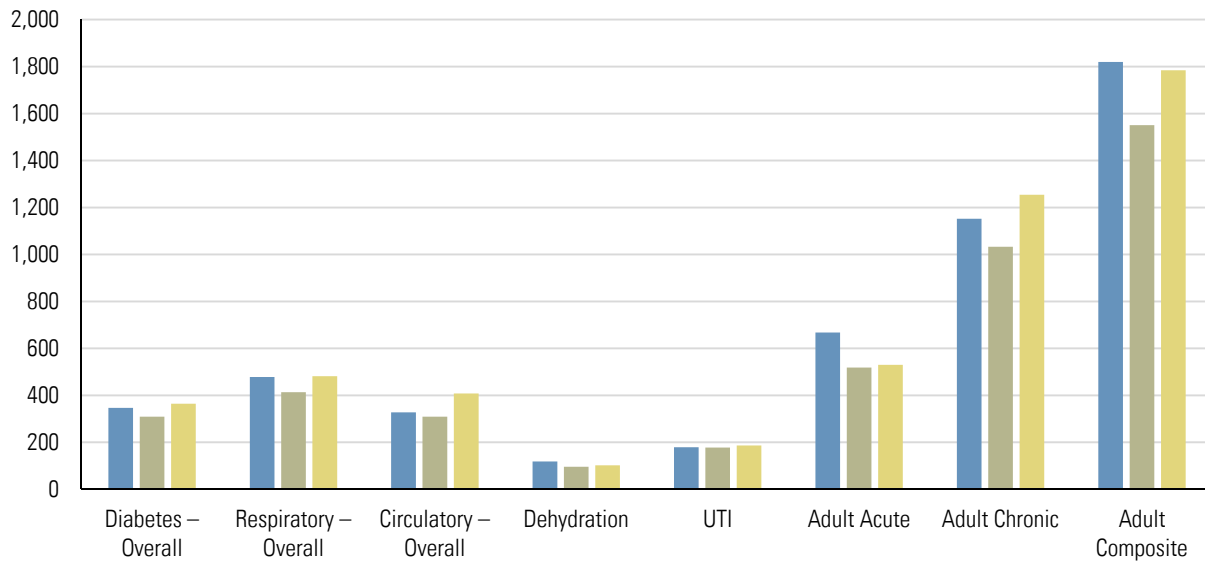
— Central New York — State

Quality Measures

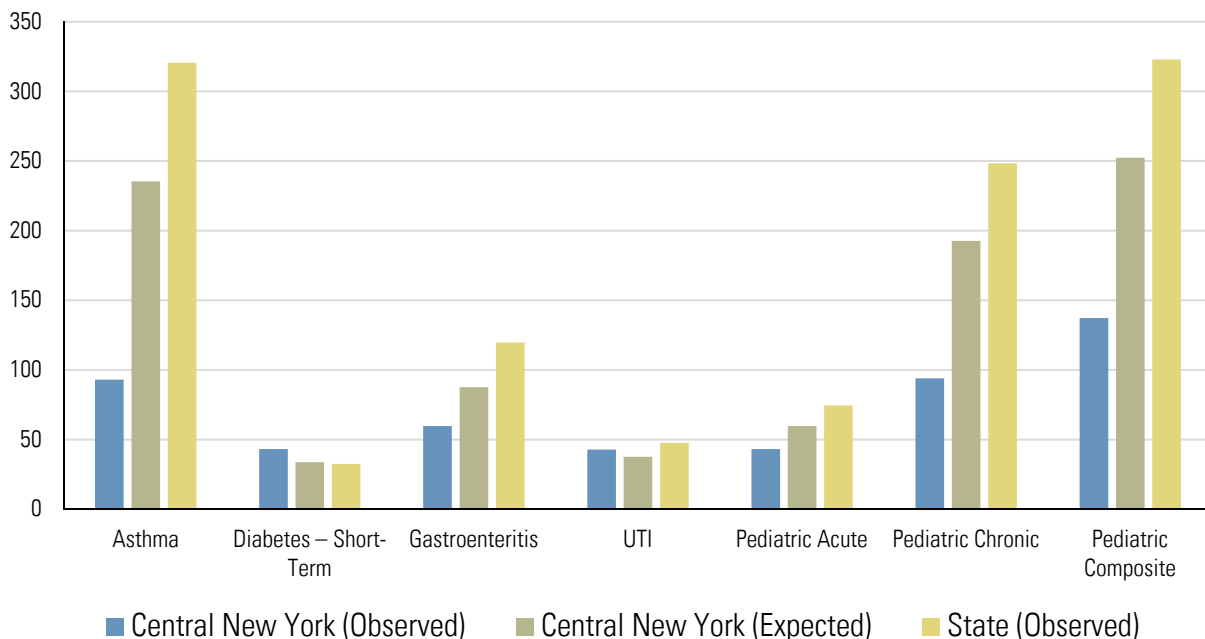
Potentially Preventable Emergency Room Visits (Rate per 100,000 Members)



Prevention Quality Indicators for Adult Discharges (Hospitalization Rate per 100,000 Members)



Prevention Quality Indicators for Pediatric Discharges (Hospitalization Rate per 100,000 Members)



Note: All expected rates are standardized for age, sex, and race/ethnicity. Quality measures are annual rates for 2012.

DSRIP Project Design Grants Awarded in the Region

Provider Name	Counties Served	Total Award	Conditions	Public Hospital
Auburn Community Hospital	Cayuga, Onondaga, Seneca, Wayne	\$369,000	Actively explore joining 1 or more PPS	
Cortland Regional Medical Center, Inc.	Cayuga, Cortland, Schuyler, Tompkins	\$497,500	None at this time	
Faxton St. Luke's Healthcare	Herkimer, Oneida	\$500,000	Actively explore joining 1 or more PPS	
St. Joseph's Hospital Health Center	Cayuga, Cortland, Jefferson, Lewis, Madison, Oneida, Onondaga, Oswego, St. Lawrence, Tompkins	\$500,000	None at this time	
Upstate University Hospital	Cayuga, Cortland, Madison, Oneida, Onondaga, Oswego	\$333,333	None at this time	✓