

# Medicaid Regional Data Compendium, 2014

## Chartbook 6: Queens (Queens County)

*This chartbook is part of a broader data compendium from the Medicaid Institute at United Hospital Fund. It presents data on the demographics, service usage, and quality measures for Medicaid beneficiaries from Queens. The chartbook is based on data for the Medicaid population residing in the borough, regardless of where they receive care; it is not a comprehensive look at care provided in Queens. For details on data elements, please see the accompanying methods and sources.*

Medicaid Regional Data Compendium, 2014 was prepared by Lee Kennedy-Shaffer and Chad Shearer of the Medicaid Institute at United Hospital Fund. The entire publication is available at [www.uhfnyc.org](http://www.uhfnyc.org) and [www.medicainstitute.org](http://www.medicainstitute.org). Funded by the New York State Department of Health.

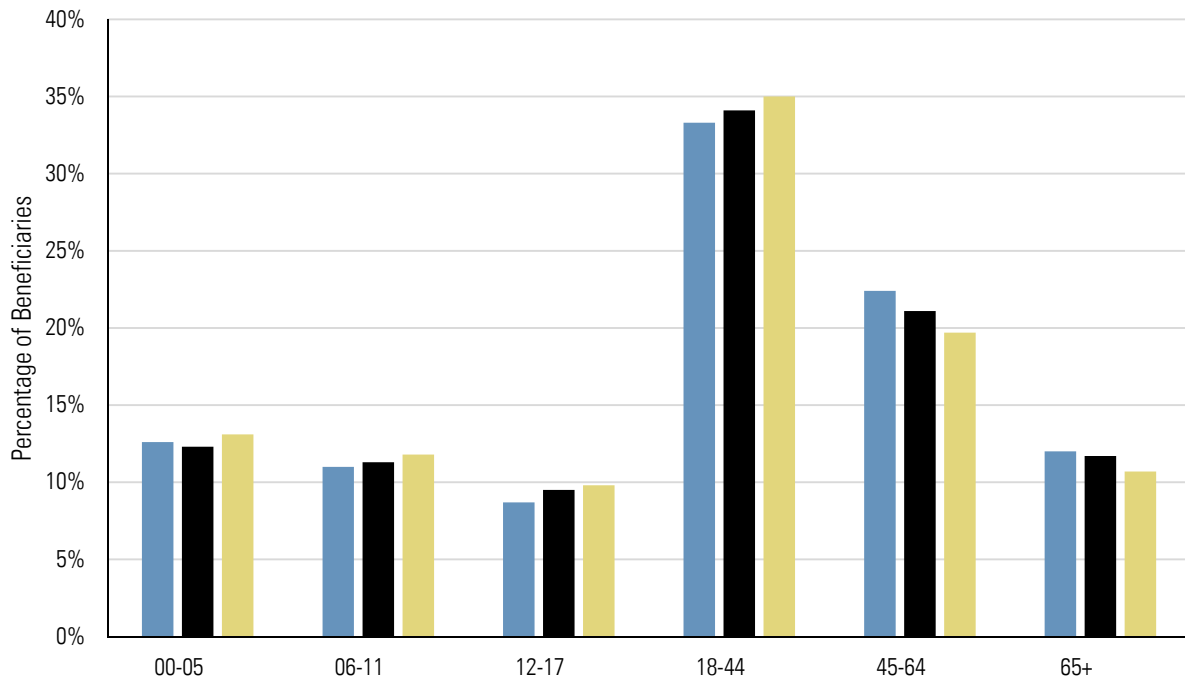
- Very large per-capita Medicaid population.
- Higher share of older beneficiaries than New York City as a whole.
- Unadjusted inpatient admission rate lower than city and statewide averages.
- Rate of potentially avoidable hospitalizations (PQIs) for adult conditions better than risk-adjusted expectations (and below statewide averages), especially for chronic conditions.
- PQIs for children better than risk-adjusted expectations and statewide averages for chronic conditions, but slightly worse for acute conditions.
- Unadjusted ER visit rate lower than city and statewide averages and fewer potentially preventable emergency room visits than the risk-adjusted expectation.

### Summary Data for Queens

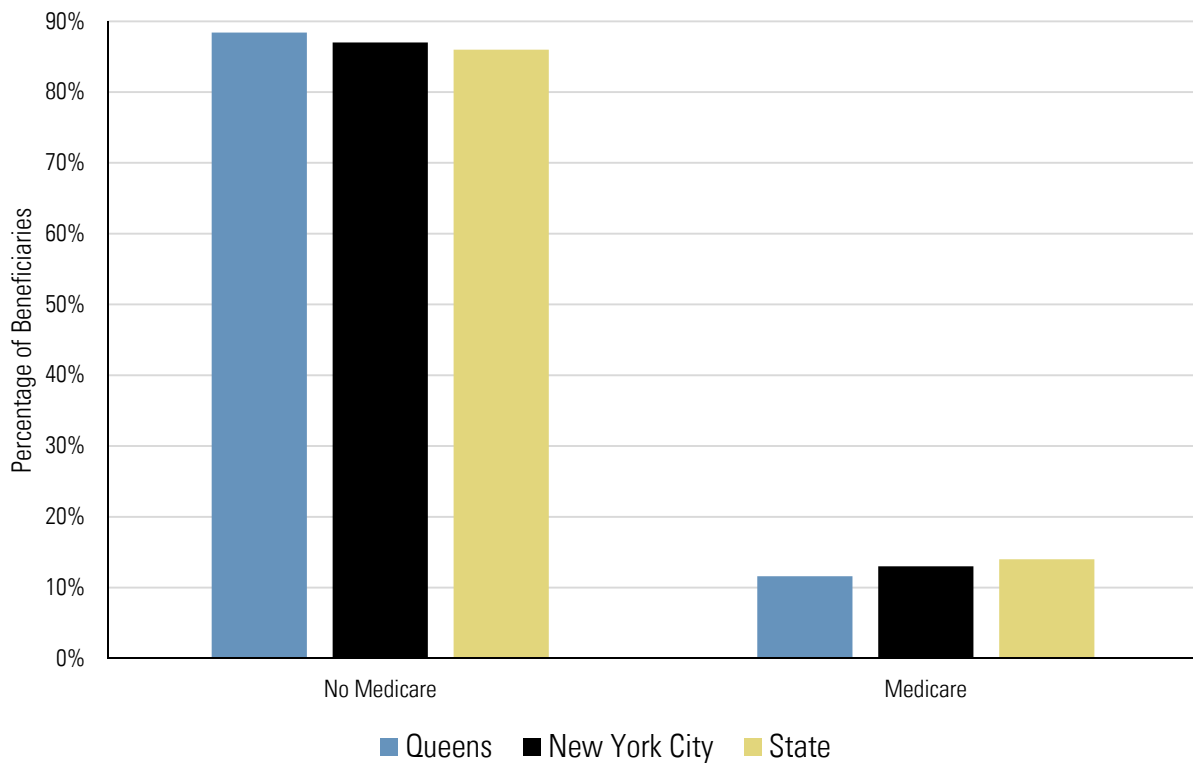
<b>Total Population as of July 1, 2013</b>	2,296,175
<b>Medicaid Beneficiaries with a Claim in 2013</b>	805,350 (35.1% of Total Population)
<b>Medicaid Claims in 2013</b>	37,171,697 (46.2 Claims per Beneficiary)
<b>Medicaid Beneficiaries Enrolled in Managed Care</b>	532,129 (66.1% of Medicaid Beneficiaries)
<b>Percentage of Claims from Providers in the Borough</b>	39.6%
<b>Top Outside Provider Locations</b>	Manhattan (21.4%), Out of State (12.6%), Brooklyn (10.8%)
<b>Mainstream Managed Care Plans</b>	See New York City Plans (Chartbook 2)
<b>Managed Long-Term Care Plans</b>	See New York City Plans (Chartbook 2)
<b>Health Homes in the Borough</b>	New York City Health and Hospitals Corporation, North Shore Long Island Jewish Health Home, Queens Coordinated Care Partners

## Characteristics of Medicaid Beneficiaries

### Medicaid Beneficiaries by Age Group



### Medicaid Beneficiaries by Medicare Enrollment Status



Note: Age group and enrollment status are for Medicaid beneficiaries with a claim in 2013.

## Diagnosis and Provider Data

### Top 25 Diagnostic Categories of All-Payer Inpatient Admissions (2012)

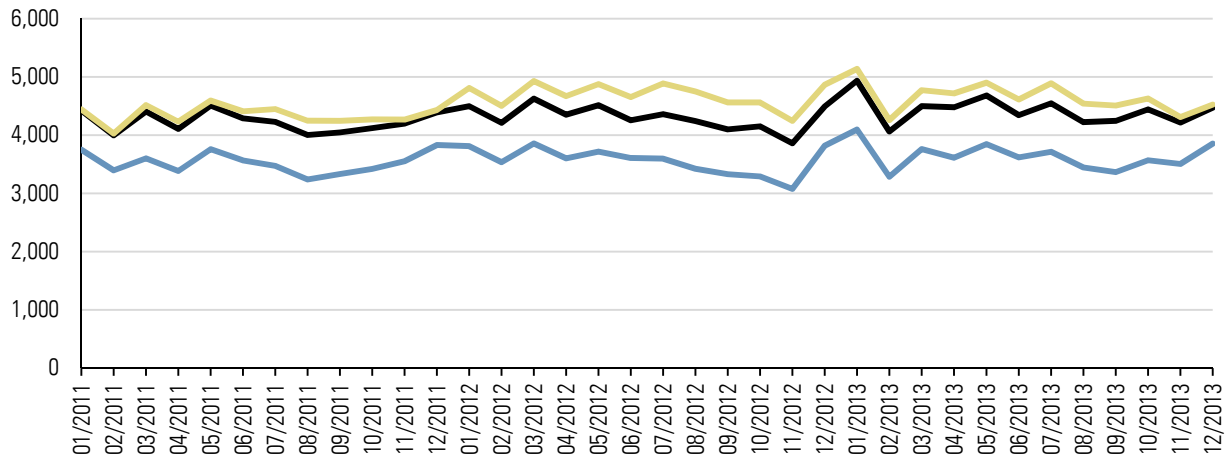
Rank	Diagnosis Category	Number of Discharges	Percent of Discharges	New York City Percentage	Statewide Percentage
1	Liveborn	29,882	11.03%	10.32%	9.43%
2	Septicemia (except in labor)	8,812	3.25%	2.77%	3.03%
3	Nonspecific chest pain	7,111	2.63%	2.45%	1.93%
4	Congestive heart failure; nonhypertensive	5,902	2.18%	2.09%	2.28%
5	Coronary atherosclerosis and other heart disease	5,657	2.09%	1.81%	1.67%
6	Cardiac dysrhythmias	5,520	2.04%	1.78%	2.02%
7	Pneumonia (except that caused by tuberculosis or sexually transmitted disease)	5,394	1.99%	1.89%	2.19%
8	Schizophrenia and other psychotic disorders	5,244	1.94%	2.18%	1.69%
9	Other complications of birth; puerperium affecting management of mother	4,993	1.84%	1.90%	1.61%
10	Mood disorders	4,895	1.81%	2.15%	2.49%
11	Diabetes mellitus with complications	4,189	1.55%	1.82%	1.52%
12	Skin and subcutaneous tissue infections	4,135	1.53%	1.66%	1.73%
13	Prolonged pregnancy	4,043	1.49%	1.47%	1.18%
14	Alcohol-related disorders	3,966	1.46%	2.46%	1.85%
15	Urinary tract infections	3,946	1.46%	1.33%	1.36%
16	Asthma	3,860	1.43%	2.13%	1.50%
17	Other complications of pregnancy	3,840	1.42%	1.51%	1.34%
18	OB-related trauma to perineum and vulva	3,732	1.38%	1.28%	1.26%
19	Previous C-section	3,668	1.35%	1.12%	1.16%
20	Polyhydramnios and other problems of amniotic cavity	3,638	1.34%	1.11%	0.87%
21	Syncope	3,633	1.34%	1.12%	0.98%
22	Acute cerebrovascular disease	3,598	1.33%	1.17%	1.31%
23	Biliary tract disease	3,585	1.32%	1.09%	1.16%
24	Complication of device; implant or graft	3,575	1.32%	1.35%	1.52%
25	Osteoarthritis	3,565	1.32%	1.15%	2.05%
<b>Total of Top 25</b>		<b>140,383</b>	<b>51.83%</b>	<b>51.12%</b>	<b>49.12%</b>
<b>All Other Diagnoses</b>		<b>130,454</b>	<b>48.17%</b>	<b>48.88%</b>	<b>50.88%</b>
<b>Total for Borough</b>		<b>270,837</b>			

### Top Five Inpatient Providers Serving the Borough's Medicaid Beneficiaries (2013)

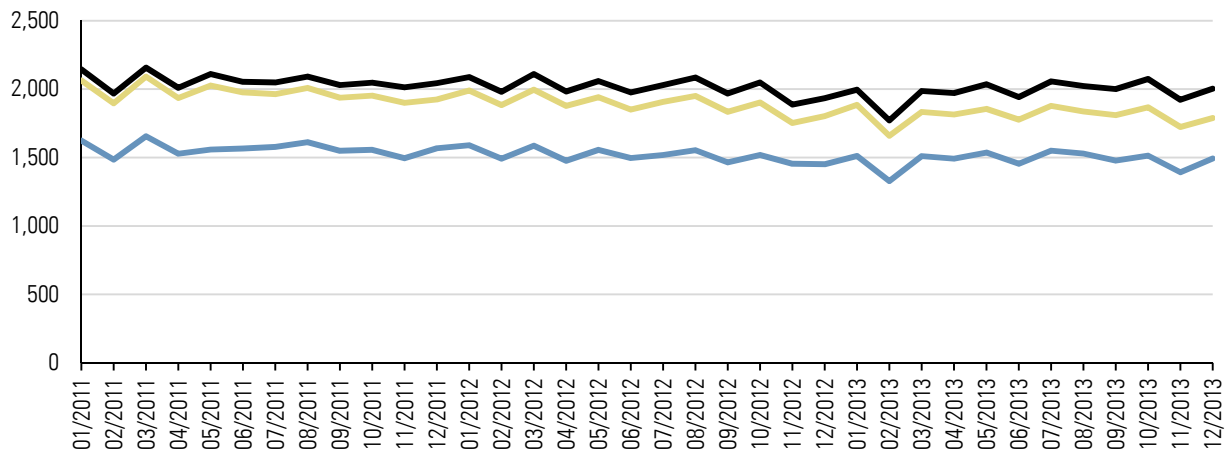
Provider Name	Number of Claims	Number of Unique Patients	Percent of Unique Patients
Elmhurst Hospital Center	24,103	13,737	14.0%
New York Hospital Medical Center of Queens	20,165	12,076	12.3%
Long Island Jewish Medical Center	18,006	9,770	10.0%
Jamaica Hospital Medical Center	16,383	9,347	9.5%
Flushing Hospital Medical Center	14,918	8,653	8.8%
<b>Total of Top Five Providers</b>	<b>93,575</b>		

## Visit Rates (Unadjusted)

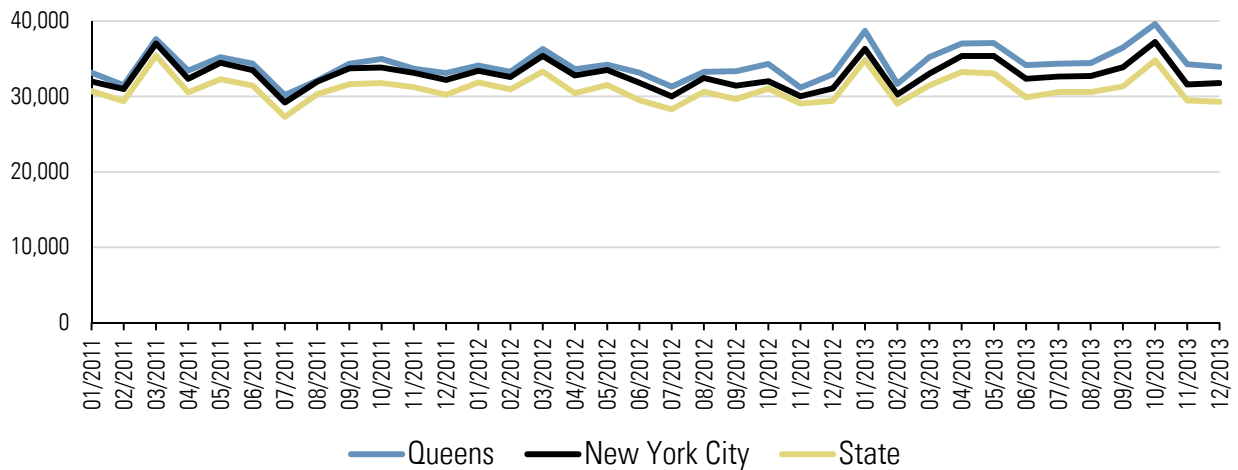
### Emergency Room Visit Rate per 100,000 Members



### Inpatient Admission Rate per 100,000 Members

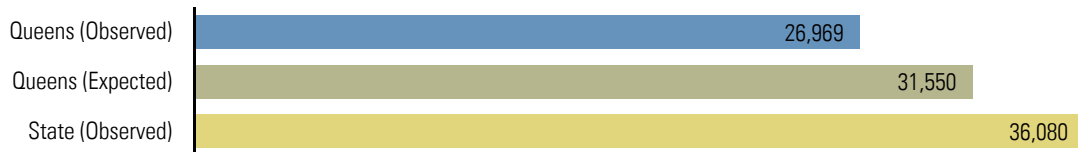


### Primary Care Visit Rate per 100,000 Members

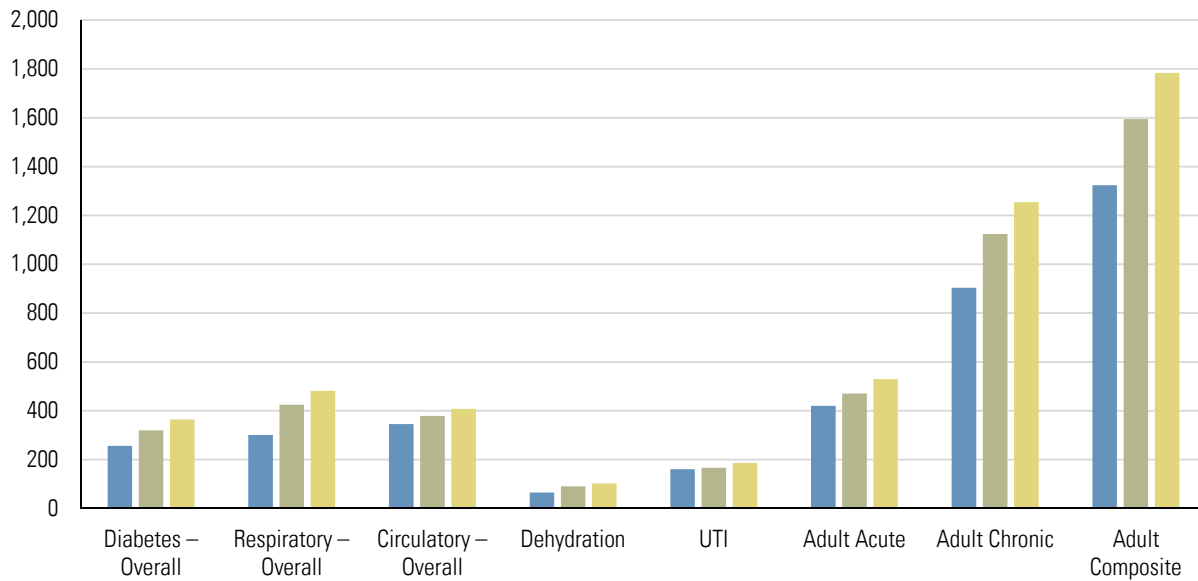


## Quality Measures

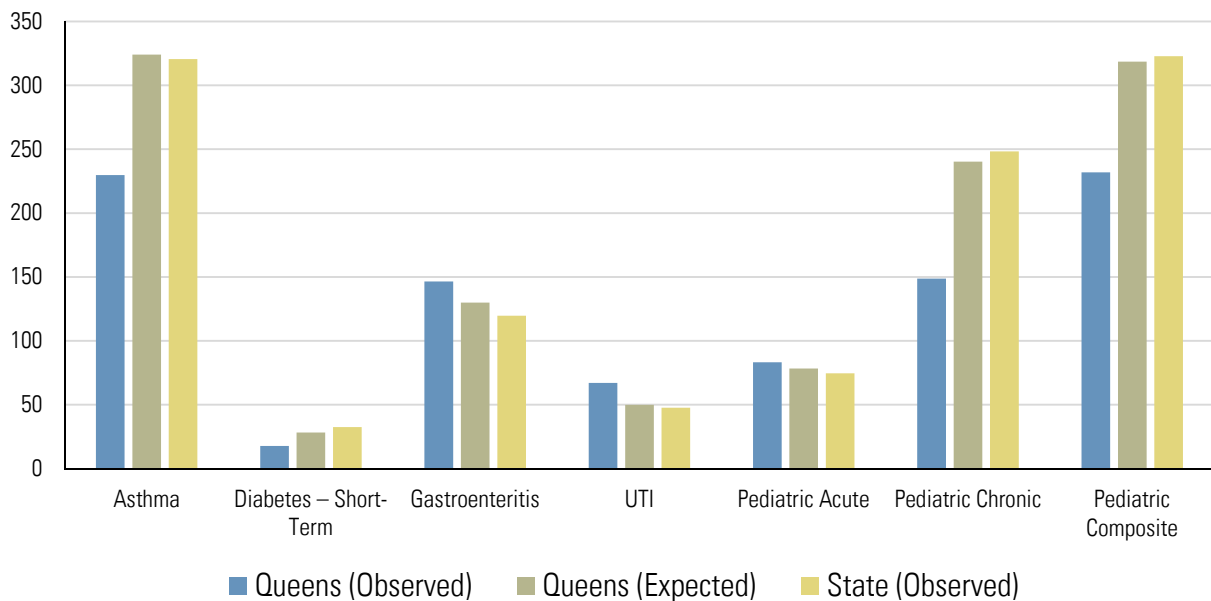
### Potentially Preventable Emergency Room Visits (Rate per 100,000 Members)



### Prevention Quality Indicators for Adult Discharges (Hospitalization Rate per 100,000 Members)



### Prevention Quality Indicators for Pediatric Discharges (Hospitalization Rate per 100,000 Members)



Note: All expected rates are standardized for age, sex, and race/ethnicity. Quality measures are annual rates for 2012.

## DSRIP Project Design Grants Awarded in the Borough

Provider Name	Counties Served	Total Award	Conditions	Public Hospital
Amida Care, Inc.	Bronx, Kings, New York, Queens, Richmond	\$500,000	Must resubmit with safety net provider as lead or successfully become a safety net provider through the appeal process. Also must demonstrate that you can function as an Integrated Delivery System.	
AW Medical	Bronx, Kings, Nassau, New York, Queens	\$500,000	Restrict geographic area and clearly demonstrate that network meets requirements. Also, need to demonstrate that providers with the PPS can clinically integrate.	
Maimonides Medical Center	Kings, Queens	\$500,000	None at this time	
Mount Sinai Hospitals Group	Bronx, Kings, New York, Queens, Richmond, Westchester	\$500,000	None at this time	
<i>New York City Health and Hospitals Corporation</i>				
Bellevue Hospital Center	Kings, New York, Queens	\$285,714	None at this time	✓
Elmhurst Hospital Center	Queens	\$285,714	None at this time	✓
The Jamaica Hospital	Kings, Queens	\$500,000	None at this time	
The New York and Presbyterian Hospital	Bronx, Kings, New York, Queens, Westchester	\$500,000	None at this time	
The New York Hospital Medical Center of Queens	Queens	\$500,000	None at this time	