

Medicaid Regional Data Compendium, 2014 Chartbook 5: Manhattan (New York County)

This chartbook is part of a broader data compendium from the Medicaid Institute at United Hospital Fund. It presents data on the demographics, service usage, and quality measures for Medicaid beneficiaries from Manhattan. The chartbook is based on data for the Medicaid population residing in the borough, regardless of where they receive care; it is not a comprehensive look at care provided in Manhattan. For details on data elements, please see the accompanying methods and sources.

Medicaid Regional Data Compendium, 2014 was prepared by Lee Kennedy-Shaffer and Chad Shearer of the Medicaid Institute at United Hospital Fund. The entire publication is available at www.uhfnyc.org and www.medicaidinstitute.org. Funded by the New York State Department of Health.

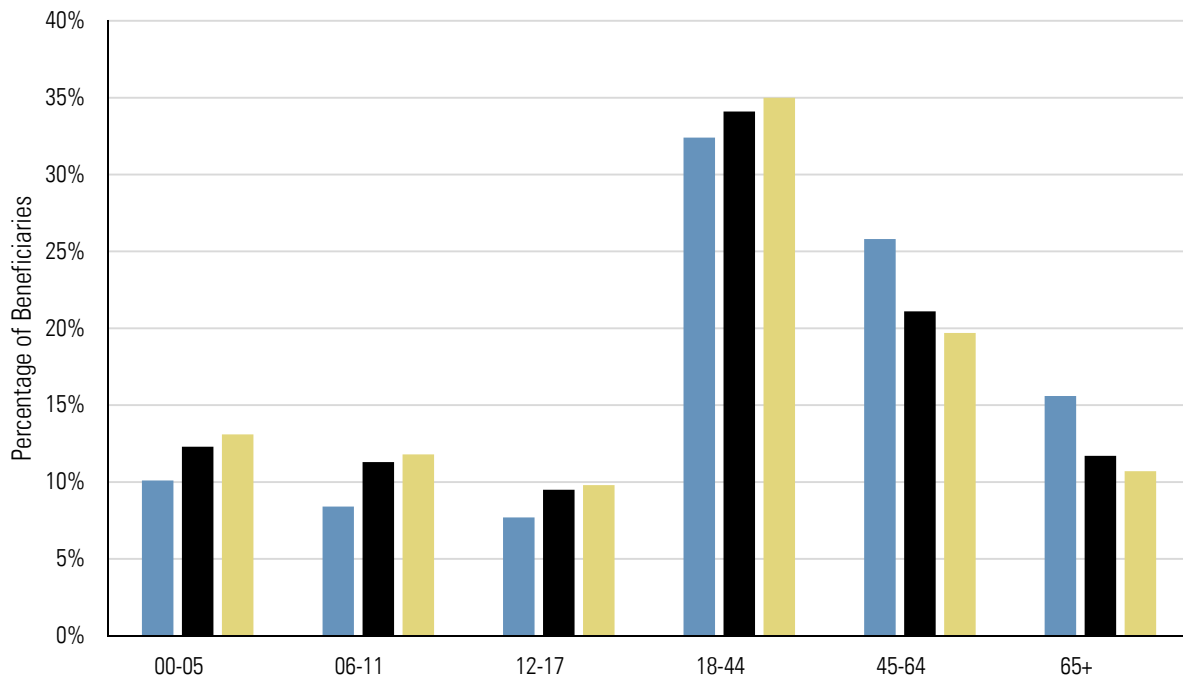
- Fairly large per-capita Medicaid population.
- Higher share of older beneficiaries and lower share of younger beneficiaries than New York City as a whole.
- Unadjusted inpatient admission rate higher than city and statewide averages.
- Rate of potentially avoidable hospitalizations (PQIs) for adult chronic conditions better than risk-adjusted expectations.
- PQIs for children worse than risk-adjusted expectations and statewide averages for nearly all selected indicators, especially chronic conditions.
- Unadjusted ER visit rate higher than city and statewide averages and more potentially preventable emergency room visits than the risk-adjusted expectation.

Summary Data for Manhattan

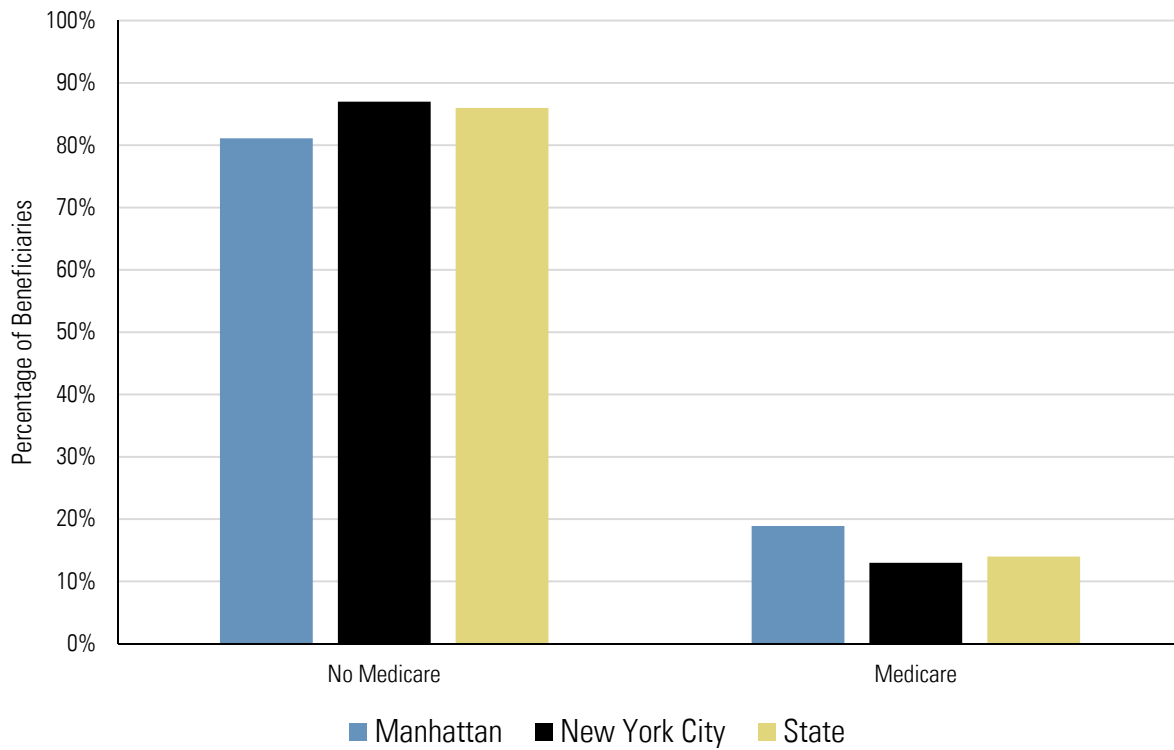
Total Population as of July 1, 2013	1,626,159
Medicaid Beneficiaries with a Claim in 2013	430,181 (26.5% of Total Population)
Medicaid Claims in 2013	23,206,506 (53.9 Claims per Beneficiary)
Medicaid Beneficiaries Enrolled in Managed Care	271,972 (63.2% of Medicaid Beneficiaries)
Percentage of Claims from Providers in the Borough	63.1%
Top Outside Provider Locations	Out of State (9.0%), Bronx (8.8%), Brooklyn (7.7%)
Mainstream Managed Care Plans	See New York City Plans (Chartbook 2)
Managed Long-Term Care Plans	See New York City Plans (Chartbook 2)
Health Homes in the Borough	Coordinated Behavioral Care dba Pathways to Wellness, Heritage Health and Housing Home Network, New York City Health and Hospitals Corporation, St. Luke's – Roosevelt Hospital Center dba Mount Sinai Health Home, The New York and Presbyterian Hospital, Visiting Nurse Service of New York Home Care dba Community Care Management Partners (CCMP)

Characteristics of Medicaid Beneficiaries

Medicaid Beneficiaries by Age Group



Medicaid Beneficiaries by Medicare Enrollment Status



Note: Age group and enrollment status are for Medicaid beneficiaries with a claim in 2013.

Diagnosis and Provider Data

Top 25 Diagnostic Categories of All-Payer Inpatient Admissions (2012)

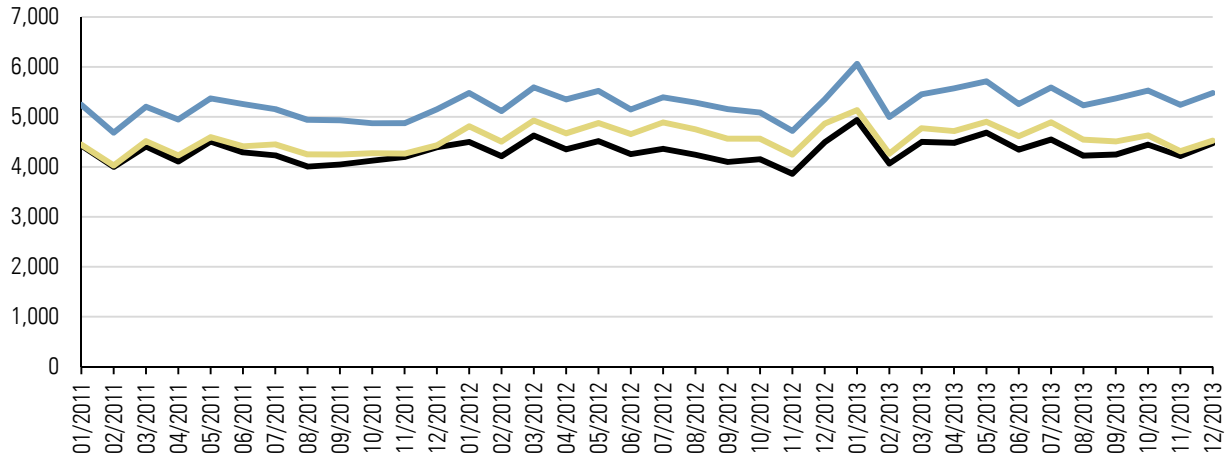
Rank	Diagnosis Category	Number of Discharges	Percent of Discharges	New York City Percentage	Statewide Percentage
1	Liveborn	19,261	9.56%	10.32%	9.43%
2	Alcohol-related disorders	7,412	3.68%	2.46%	1.85%
3	Mood disorders	5,920	2.94%	2.15%	2.49%
4	Substance-related disorders	5,658	2.81%	1.83%	1.58%
5	Schizophrenia and other psychotic disorders	5,405	2.68%	2.18%	1.69%
6	Septicemia (except in labor)	4,480	2.22%	2.77%	3.03%
7	Pneumonia (except that caused by tuberculosis or sexually transmitted disease)	3,934	1.95%	1.89%	2.19%
8	Rehabilitation care; fitting of prostheses; and adjustment of devices	3,900	1.94%	1.36%	1.33%
9	Nonspecific chest pain	3,884	1.93%	2.45%	1.93%
10	Other complications of birth; puerperium affecting management of mother	3,765	1.87%	1.90%	1.61%
11	Congestive heart failure; nonhypertensive	3,724	1.85%	2.09%	2.28%
12	Asthma	3,585	1.78%	2.13%	1.50%
13	Cardiac dysrhythmias	3,505	1.74%	1.78%	2.02%
14	Skin and subcutaneous tissue infections	3,276	1.63%	1.66%	1.73%
15	Coronary atherosclerosis and other heart disease	3,266	1.62%	1.81%	1.67%
16	Diabetes mellitus with complications	3,151	1.56%	1.82%	1.52%
17	Osteoarthritis	3,067	1.52%	1.15%	2.05%
18	Complication of device; implant or graft	2,984	1.48%	1.35%	1.52%
19	Prolonged pregnancy	2,748	1.36%	1.47%	1.18%
20	Polyhydramnios and other problems of amniotic cavity	2,693	1.34%	1.11%	0.87%
21	Urinary tract infections	2,653	1.32%	1.33%	1.36%
22	Other complications of pregnancy	2,556	1.27%	1.51%	1.34%
23	Acute cerebrovascular disease	2,387	1.18%	1.17%	1.31%
24	Complications of surgical procedures or medical care	2,364	1.17%	1.17%	1.30%
25	Fluid and electrolyte disorders	2,312	1.15%	1.14%	1.15%
Total of Top 25		107,890	53.55%	52.01%	49.93%
All Other Diagnoses		93,588	46.45%	47.99%	50.07%
Total for Borough		201,478			

Top Five Inpatient Providers Serving the Borough's Medicaid Beneficiaries (2013)

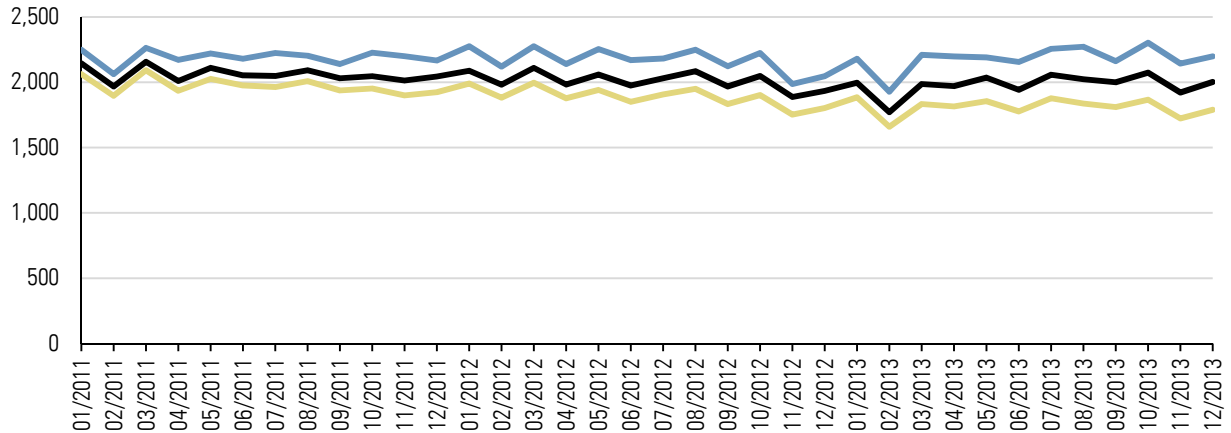
Provider Name	Number of Claims	Number of Unique Patients	Percent of Unique Patients
New York-Presbyterian	25,587	14,469	22.9%
St. Luke's Roosevelt Hospital Center	16,768	9,275	14.7%
Beth Israel Medical Center	13,069	7,427	11.8%
Mount Sinai Hospital	12,754	6,973	11.1%
Harlem Hospital Center	8,854	5,024	8.0%
Total of Top Five Providers	77,032		

Visit Rates (Unadjusted)

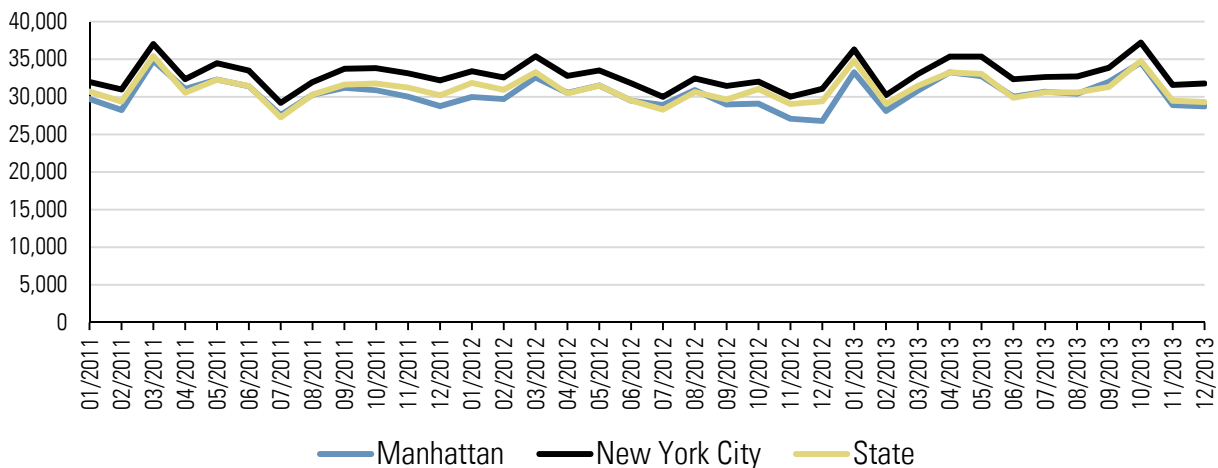
Emergency Room Visit Rate per 100,000 Members



Inpatient Admission Rate per 100,000 Members

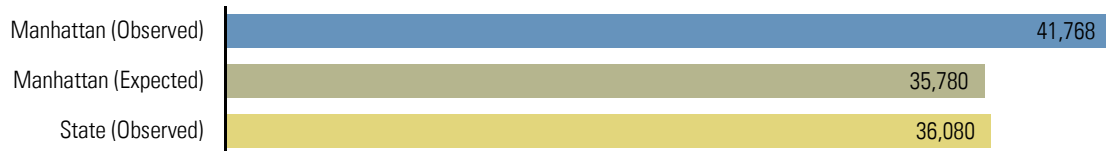


Primary Care Visit Rate per 100,000 Members

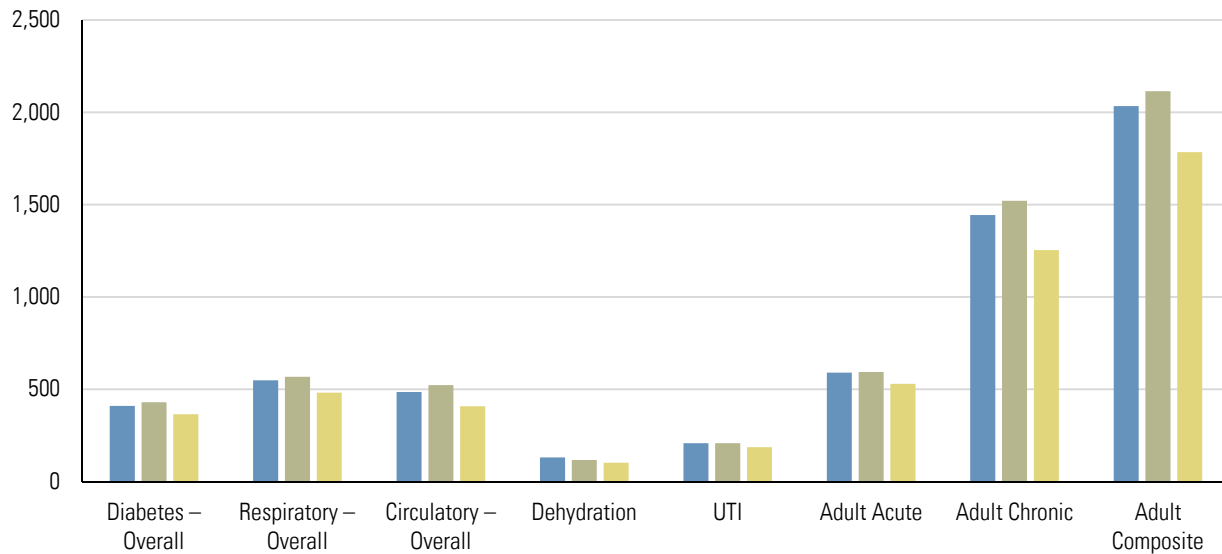


Quality Measures

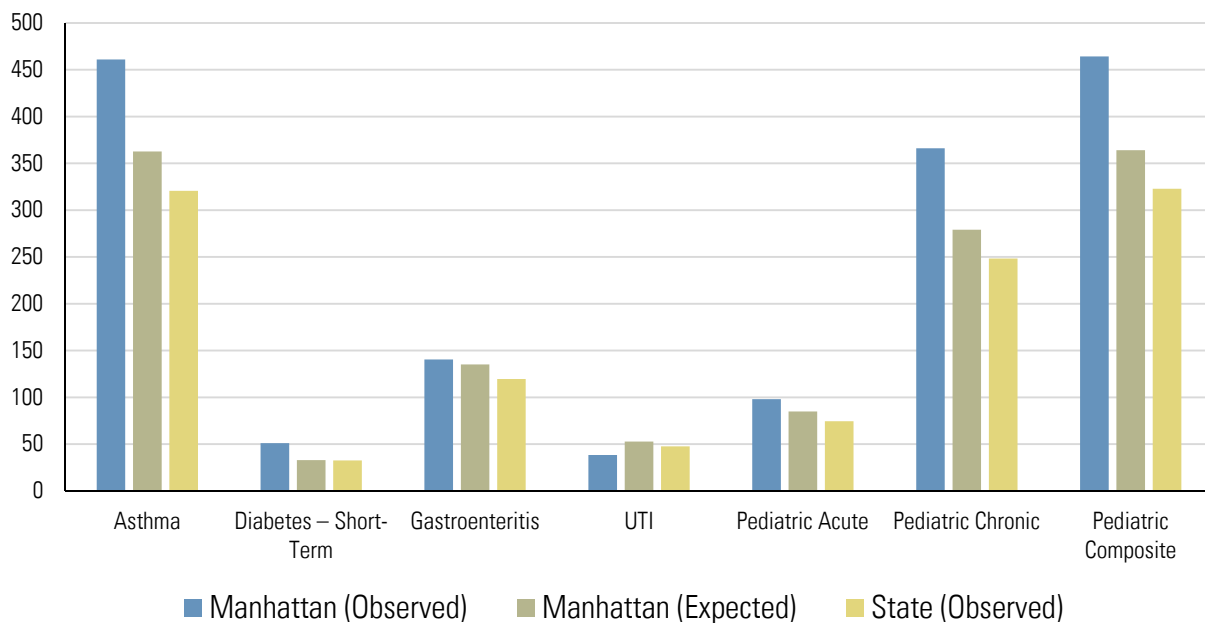
Potentially Preventable Emergency Room Visits (Rate per 100,000 Members)



Prevention Quality Indicators for Adult Discharges (Hospitalization Rate per 100,000 Members)



Prevention Quality Indicators for Pediatric Discharges (Hospitalization Rate per 100,000 Members)



Note: All expected rates are standardized for age, sex, and race/ethnicity. Quality measures are annual reports for 2012.

DSRIP Project Design Grants Awarded in the Borough

Provider Name	Counties Served	Total Award	Conditions	Public Hospital
Amida Care, Inc.	Bronx, Kings, New York, Queens, Richmond	\$500,000	Must resubmit with safety net provider as lead or successfully become a safety net provider through the appeal process. Also must demonstrate that you can function as an Integrated Delivery System.	
AW Medical	Bronx, Kings, Nassau, New York, Queens	\$500,000	Restrict geographic area and clearly demonstrate that network meets requirements. Also, need to demonstrate that providers with the PPS can clinically integrate.	
Mount Sinai Hospitals Group	Bronx, Kings, New York, Queens, Richmond, Westchester	\$500,000	None at this time	
<i>New York City Health and Hospitals Corporation</i>				
Bellevue Hospital Center	Kings, New York, Queens	\$285,714	None at this time	✓
Harlem Hospital Center	Bronx, New York	\$285,714	None at this time	✓
The New York and Presbyterian Hospital	Bronx, Kings, New York, Queens, Westchester	\$500,000	None at this time	