

# Medicaid Regional Data Compendium, 2014 Chartbook 3: The Bronx (Bronx County)

*This chartbook is part of a broader data compendium from the Medicaid Institute at United Hospital Fund. It presents data on the demographics, service usage, and quality measures for Medicaid beneficiaries from the Bronx. The chartbook is based on data for the Medicaid population residing in the the borough, regardless of where they receive care; it is not a comprehensive look at care provided in the Bronx. For details on data elements, please see the accompanying methods and sources.*

Medicaid Regional Data Compendium, 2014 was prepared by Lee Kennedy-Shaffer and Chad Shearer of the Medicaid Institute at United Hospital Fund. The entire publication is available at [www.uhfny.org](http://www.uhfny.org) and [www.medicainstitute.org](http://www.medicainstitute.org). Funded by the New York State Department of Health.

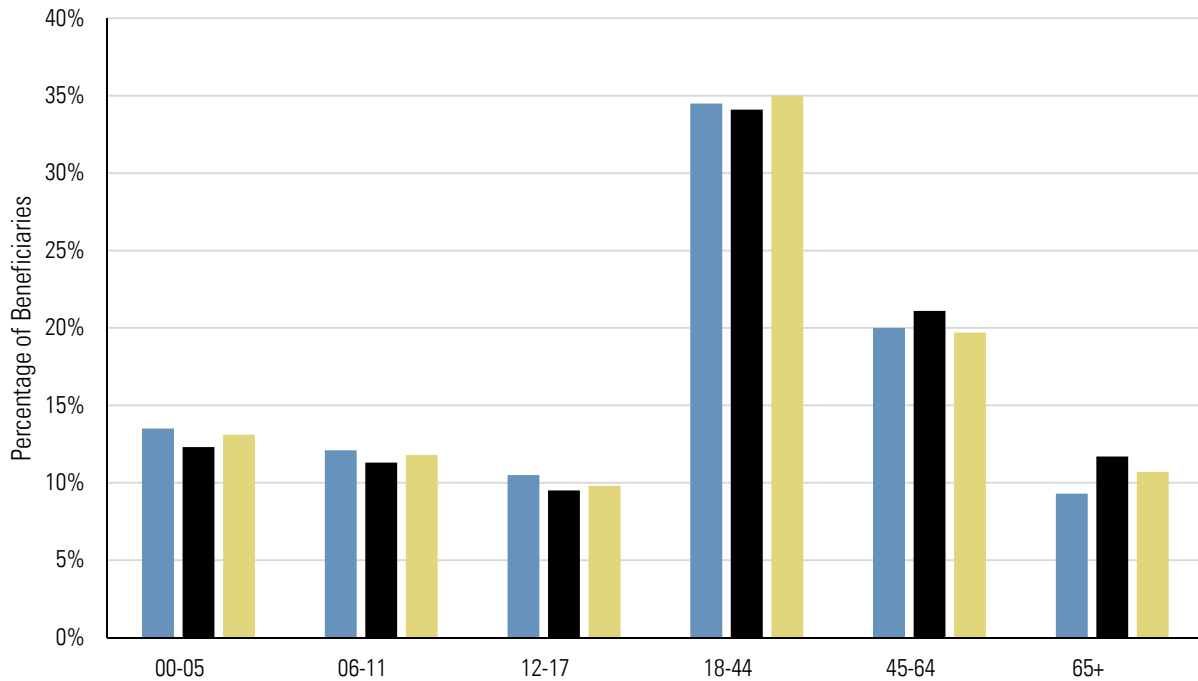
- Very large per-capita Medicaid population.
- Higher share of younger beneficiaries and lower share of older beneficiaries than New York City as a whole.
- Unadjusted inpatient admission rate higher than city and statewide averages.
- Rate of potentially avoidable hospitalizations (PQIs) for adult conditions higher than risk-adjusted expectations, especially for chronic conditions.
- PQIs for children worse than risk-adjusted expectations and statewide averages for nearly all selected indicators, especially asthma and gastroenteritis.
- Unadjusted ER visit rate higher than city and statewide averages and more potentially preventable emergency room visits than the risk-adjusted expectation.

## Summary Data for the Bronx

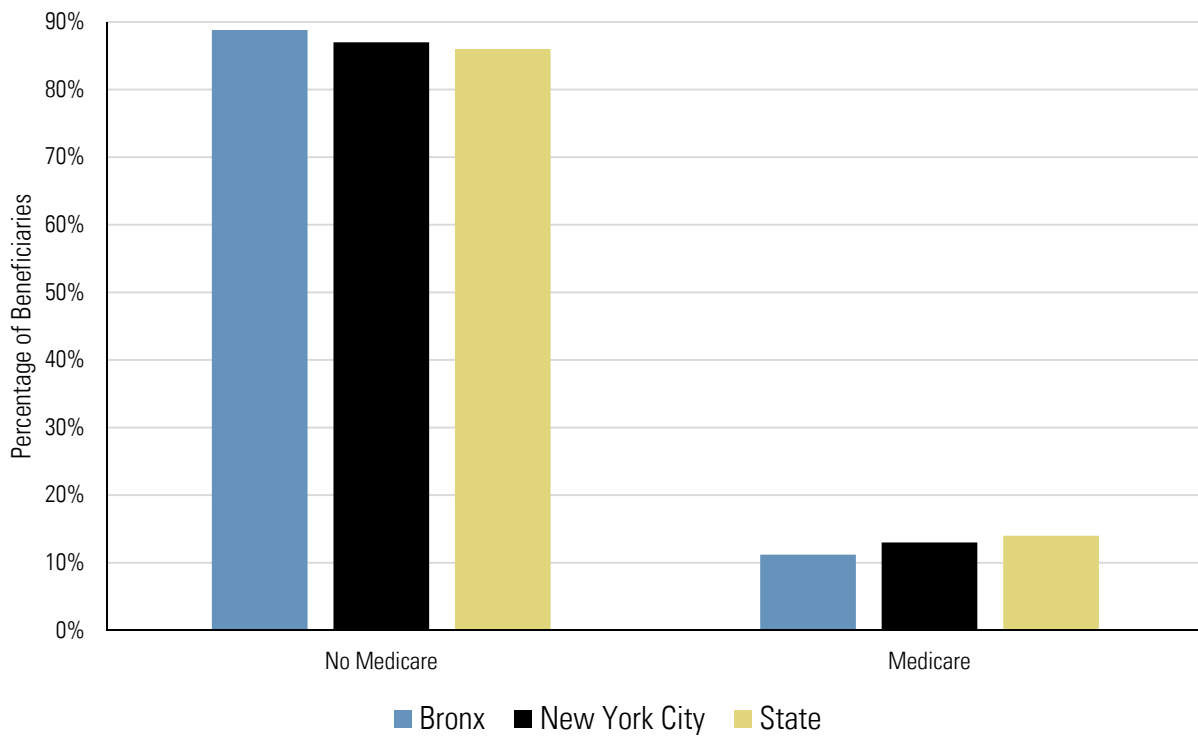
Total Population as of July 1, 2013	1,418,733
Medicaid Beneficiaries with a Claim in 2013	723,331 (51.0% of Total Population)
Medicaid Claims in 2013	32,759,400 (45.3 Claims per Beneficiary)
Medicaid Beneficiaries Enrolled in Managed Care	487,861 (67.4% of Medicaid Beneficiaries)
Percentage of Claims from Providers in the Borough	50.1%
Top Outside Provider Locations	Manhattan (25.2%), Out of State (8.5%), Brooklyn (5.2%)
Mainstream Managed Care Plans	See New York City Plans (Chartbook 2)
Managed Long-Term Care Plans	See New York City Plans (Chartbook 2)
Health Homes in the Borough	Bronx Accountable Healthcare Network Health Home (BAHN), Bronx-Lebanon Hospital Center, Community Health Care Network, New York City Health and Hospitals Corporation, Visiting Nurse Service of New York Home Care dba Community Care Management Partners (CCMP)

## Characteristics of Medicaid Beneficiaries

### Medicaid Beneficiaries by Age Group



### Medicaid Beneficiaries by Medicare Enrollment Status



Note: Age group and enrollment status are for Medicaid beneficiaries with a claim in 2013.

## Diagnosis and Provider Data

### Top 25 Diagnostic Categories of All-Payer Inpatient Admissions (2012)

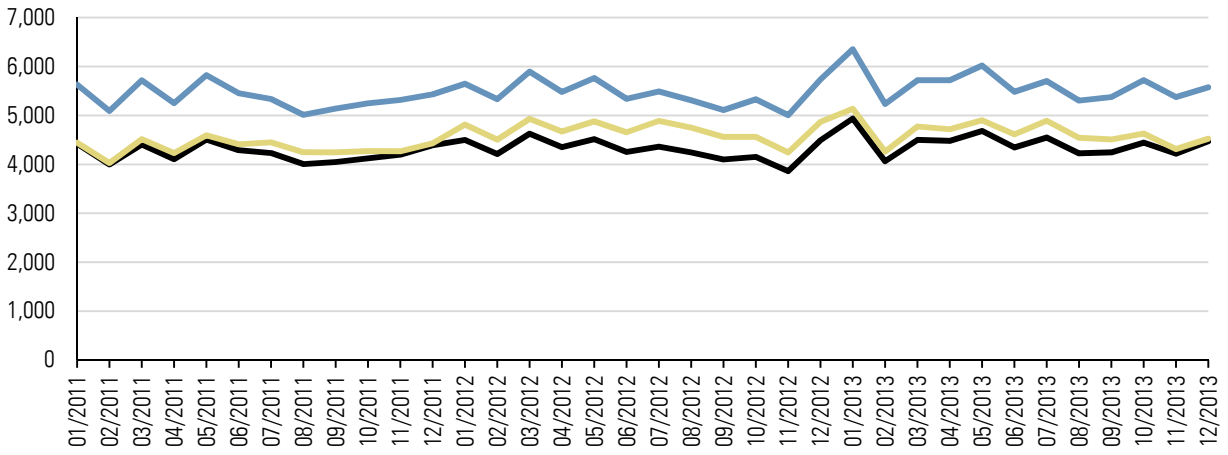
Rank	Diagnosis Category	Number of Discharges	Percent of Discharges	NYC Percentage	Statewide Percentage
1	Liveborn	21,046	8.96%	10.32%	9.43%
2	Asthma	8,421	3.59%	2.13%	1.50%
3	Alcohol-related disorders	7,145	3.04%	2.46%	1.85%
4	Septicemia (except in labor)	6,588	2.81%	2.77%	3.03%
5	Nonspecific chest pain	6,500	2.77%	2.45%	1.93%
6	Substance-related disorders	5,698	2.43%	1.83%	1.58%
7	Diabetes mellitus with complications	5,138	2.19%	1.82%	1.52%
8	Congestive heart failure; nonhypertensive	4,944	2.11%	2.09%	2.28%
9	Mood disorders	4,763	2.03%	2.15%	2.49%
10	Schizophrenia and other psychotic disorders	4,754	2.02%	2.18%	1.69%
11	Pneumonia (except that caused by tuberculosis or sexually transmitted disease)	4,649	1.98%	1.89%	2.19%
12	Skin and subcutaneous tissue infections	4,283	1.82%	1.66%	1.73%
13	Other complications of pregnancy	3,974	1.69%	1.51%	1.34%
14	Other complications of birth; puerperium affecting management of mother	3,739	1.59%	1.90%	1.61%
15	Cardiac dysrhythmias	3,500	1.49%	1.78%	2.02%
16	Urinary tract infections	3,118	1.33%	1.33%	1.36%
17	Coronary atherosclerosis and other heart disease	3,112	1.33%	1.81%	1.67%
18	Epilepsy; convulsions	3,111	1.33%	1.26%	1.08%
19	Complication of device; implant or graft	2,913	1.24%	1.35%	1.52%
20	Complications of surgical procedures or medical care	2,773	1.18%	1.17%	1.30%
21	Fluid and electrolyte disorders	2,756	1.17%	1.14%	1.15%
22	Prolonged pregnancy	2,707	1.15%	1.47%	1.18%
23	Biliary tract disease	2,626	1.12%	1.09%	1.16%
24	Chronic obstructive pulmonary disease and bronchiectasis	2,464	1.05%	1.06%	1.48%
25	Previous C-section	2,411	1.03%	1.12%	1.16%
<b>Total of Top 25</b>		<b>123,133</b>	<b>52.45%</b>	<b>51.75%</b>	<b>49.25%</b>
<b>All Other Diagnoses</b>		<b>111,635</b>	<b>47.55%</b>	<b>48.25%</b>	<b>50.75%</b>
<b>Total for Borough</b>		<b>234,768</b>			

### Top Five Inpatient Providers Serving the Borough's Medicaid Beneficiaries (2013)

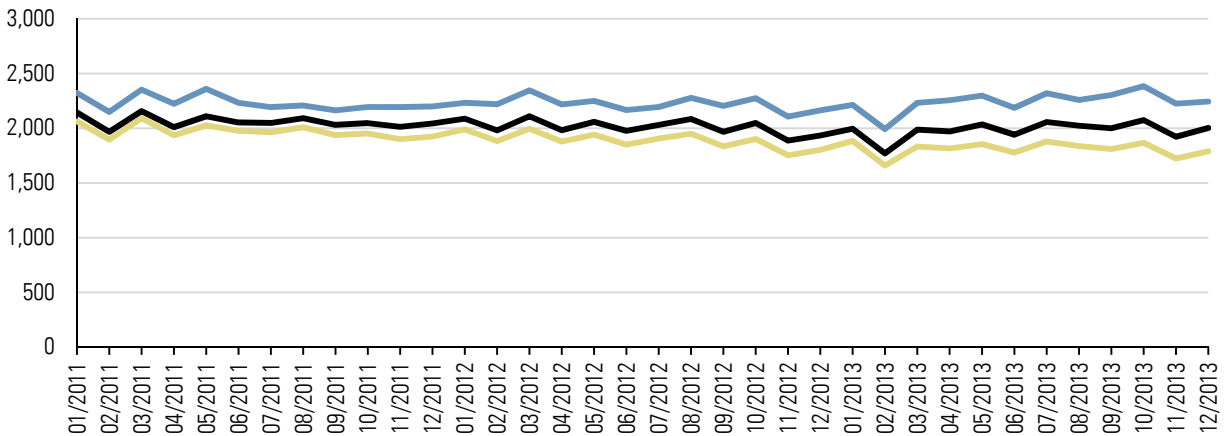
Provider Name	Number of Claims	Number of Unique Patients	Percent of Unique Patients
Montefiore Medical Center	64,947	32,677	30.8%
Bronx Lebanon Hospital Center	29,482	15,365	14.5%
Lincoln Medical/Mental Health	24,774	13,237	12.5%
Jacobi Medical Center	19,933	11,557	10.9%
St. Barnabas Hospital	17,204	9,294	8.8%
<b>Total of Top Five Providers</b>	<b>156,340</b>		

## Visit Rates (Unadjusted)

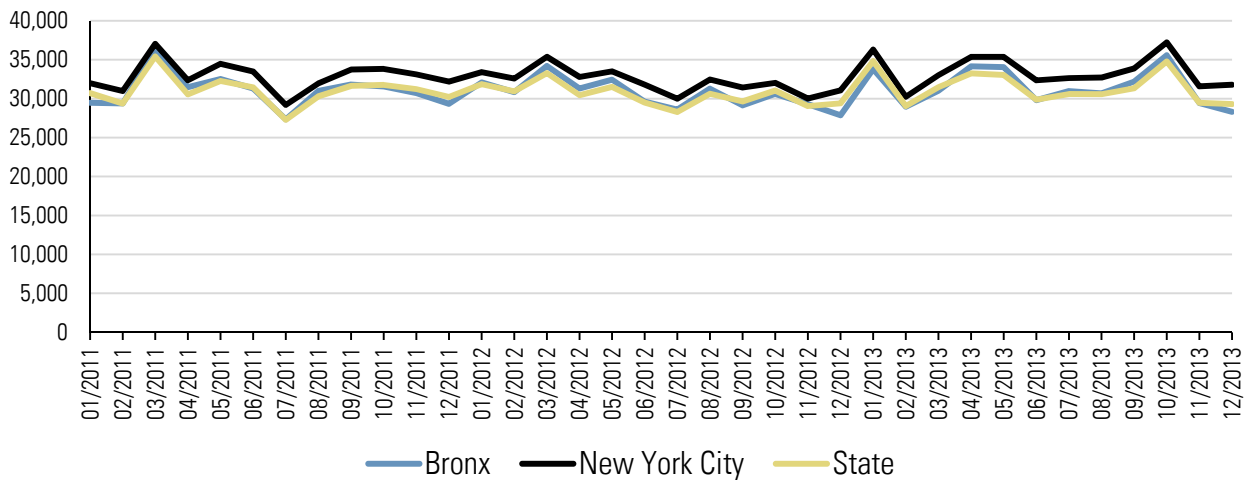
### Emergency Room Visit Rate per 100,000 Members



### Inpatient Admission Rate per 100,000 Members

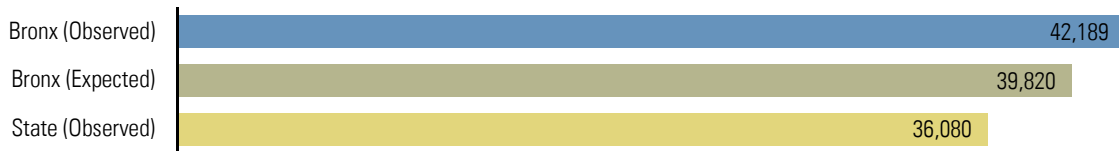


### Primary Care Visit Rate per 100,000 Members

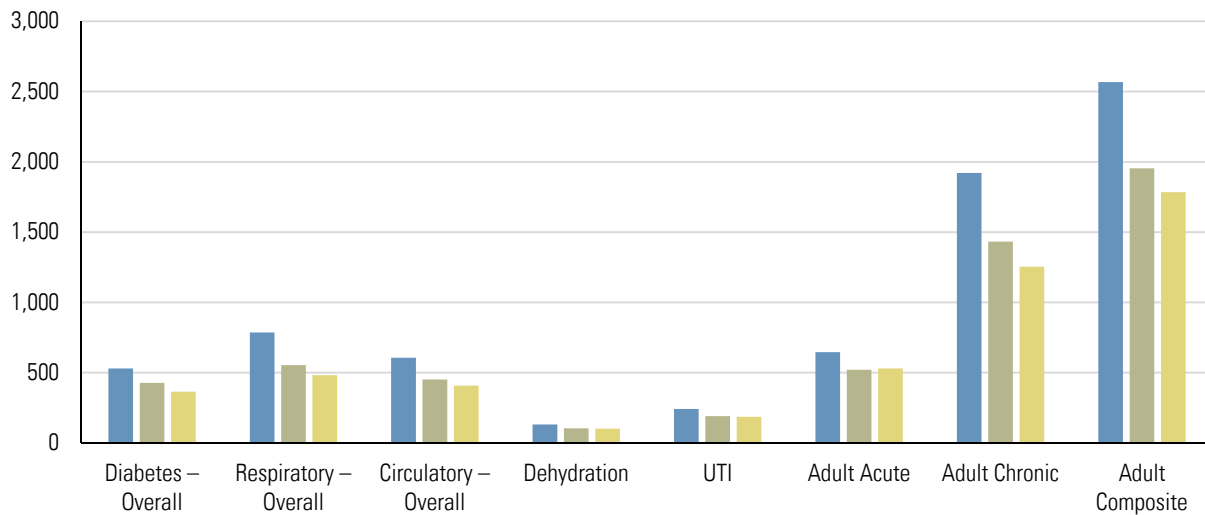


## Quality Measures

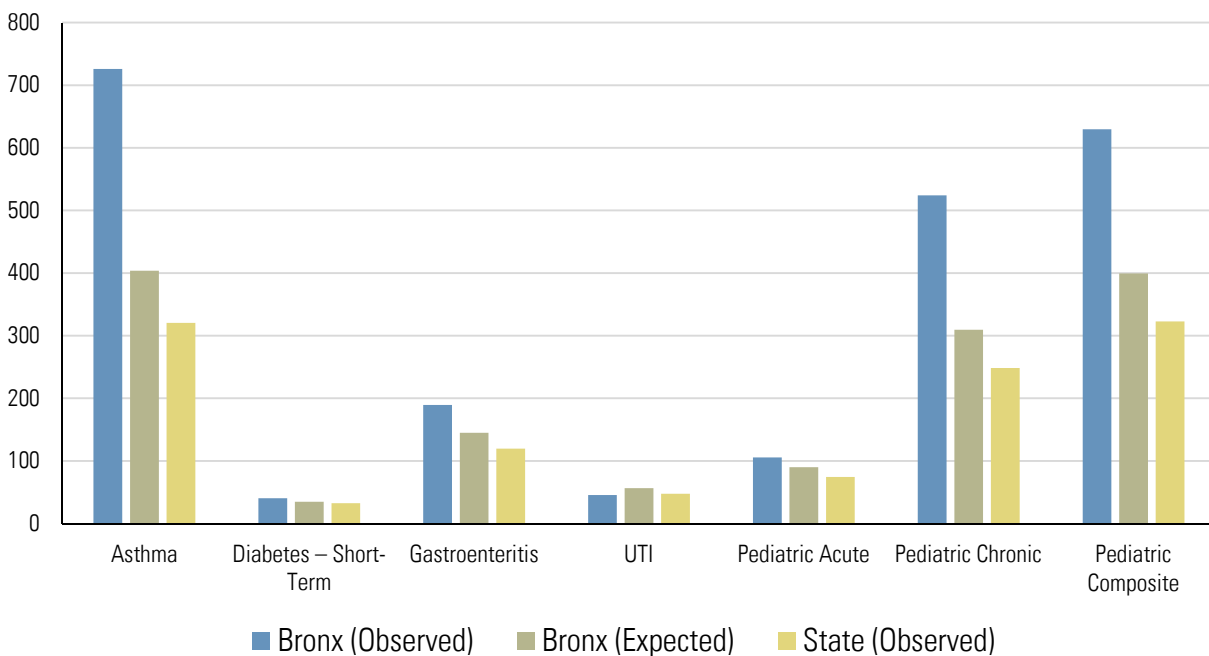
### Potentially Preventable Emergency Room Visits (Rate per 100,000 Members)



### Prevention Quality Indicators for Adult Discharges (Hospitalization Rate per 100,000 Members)



### Prevention Quality Indicators for Pediatric Discharges (Hospitalization Rate per 100,000 Members)



Note: All expected rates are standardized for age, sex, and race/ethnicity. Quality measures are annual rates for 2012.

## DSRIP Project Design Grants Awarded in the Borough

Provider Name	Counties Served	Total Award	Conditions	Public Hospital
Amida Care, Inc.	Bronx, Kings, New York, Queens, Richmond	\$500,000	Must resubmit with safety net provider as lead or successfully become a safety net provider through the appeal process. Also must demonstrate that you can function as an Integrated Delivery System.	
AW Medical	Bronx, Kings, Nassau, New York, Queens	\$500,000	Restrict geographic area and clearly demonstrate that network meets requirements. Also, need to demonstrate that providers with the PPS can clinically integrate.	
Bronx-Lebanon Hospital Center	Bronx	\$500,000	Discuss geographic overlap with other PPS and ensure that the PPS is financially sustainable.	
Mount Sinai Hospitals Group	Bronx, Kings, New York, Queens, Richmond, Westchester	\$500,000	None at this time	
<i>New York City Health and Hospitals Corporation</i>				
Harlem Hospital Center	Bronx, New York	\$285,714	None at this time	✓
Jacobi Medical Center	Bronx	\$285,714	None at this time	✓
St. Barnabas Hospital (dba SBH Health System)	Bronx	\$500,000	Discuss geographic overlap with other PPS and ensure that the PPS is financially sustainable.	
The New York and Presbyterian Hospital	Bronx, Kings, New York, Queens, Westchester	\$500,000	None at this time	