

Medicaid Regional Data Compendium, 2014 Chartbook 2: New York City

This chartbook is part of a broader data compendium from the Medicaid Institute at United Hospital Fund. It presents data on the demographics, service usage, and quality measures for Medicaid beneficiaries from New York City. The chartbook is based on data for the Medicaid population residing in the city, regardless of where they receive care; it is not a comprehensive look at care provided in New York City. For details on data elements, please see the accompanying methods and sources.

Medicaid Regional Data Compendium, 2014 was prepared by Lee Kennedy-Shaffer and Chad Shearer of the Medicaid Institute at United Hospital Fund. The entire publication is available at www.uhfnyc.org and www.medicainstitute.org. Funded by the New York State Department of Health.

- Very large per-capita Medicaid population.
- Higher share of older beneficiaries and lower share of younger beneficiaries than the state as a whole.
- Unadjusted inpatient admission rate slightly higher than the statewide average.
- Rate of potentially avoidable hospitalizations (PQIs) for adult acute conditions better than risk-adjusted expectations (and below statewide averages). PQIs for adult chronic conditions worse than risk-adjusted expectations (and above statewide averages).
- PQIs for children worse than risk-adjusted expectations for nearly all selected indicators, especially gastroenteritis and asthma.
- Fewer potentially preventable emergency room visits than the risk-adjusted expectation.

Summary Data for New York City

Counties	Bronx, Kings (Brooklyn), New York (Manhattan), Queens, Richmond (Staten Island)
Total Population as of July 1, 2013	8,405,837
Medicaid Beneficiaries with a Claim in 2013	3,142,548 (37.4% of Total Population)
Medicaid Claims in 2013	176,261,164 (56.1 Claims per Beneficiary)
Medicaid Beneficiaries Enrolled in Managed Care	2,103,659 (66.9% of Medicaid Beneficiaries)

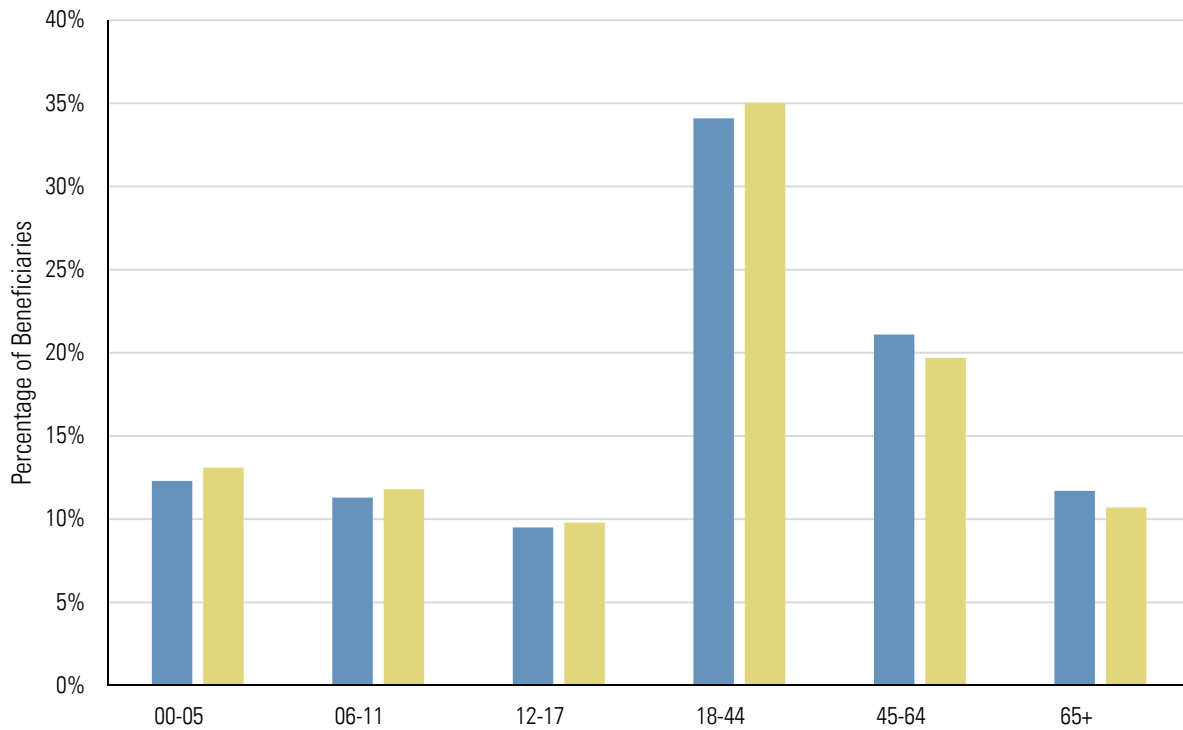
Mainstream Managed Care Plans: Affinity Health Plan, Amerigroup, Amida Care, HealthFirst PHSP, HIP of Greater New York, MetroPlus, NYS Catholic Health Plan, United Healthcare Plan, VNS Choice, WellCare

Managed Long-Term Care Plans: Aetna Better Health, AgeWell New York, AlphaCare, Amerigroup, ArchCare Community Life, ArchCare Senior Life, CCM Select, Centers Plan for Healthy Living, Comprehensive Care Management, ElderPlan, ElderServe, Extended MLTC, Fidelis Care at Home, GuildNet, HHH Choices, HIP of Greater New York, Independence Care Systems, Integra, MetroPlus, Montefiore HMO, North Shore-LIJ Health Plan, Senior Health Partners, Senior Whole Health, United Healthcare, Village Care, VNS Choice, WellCare

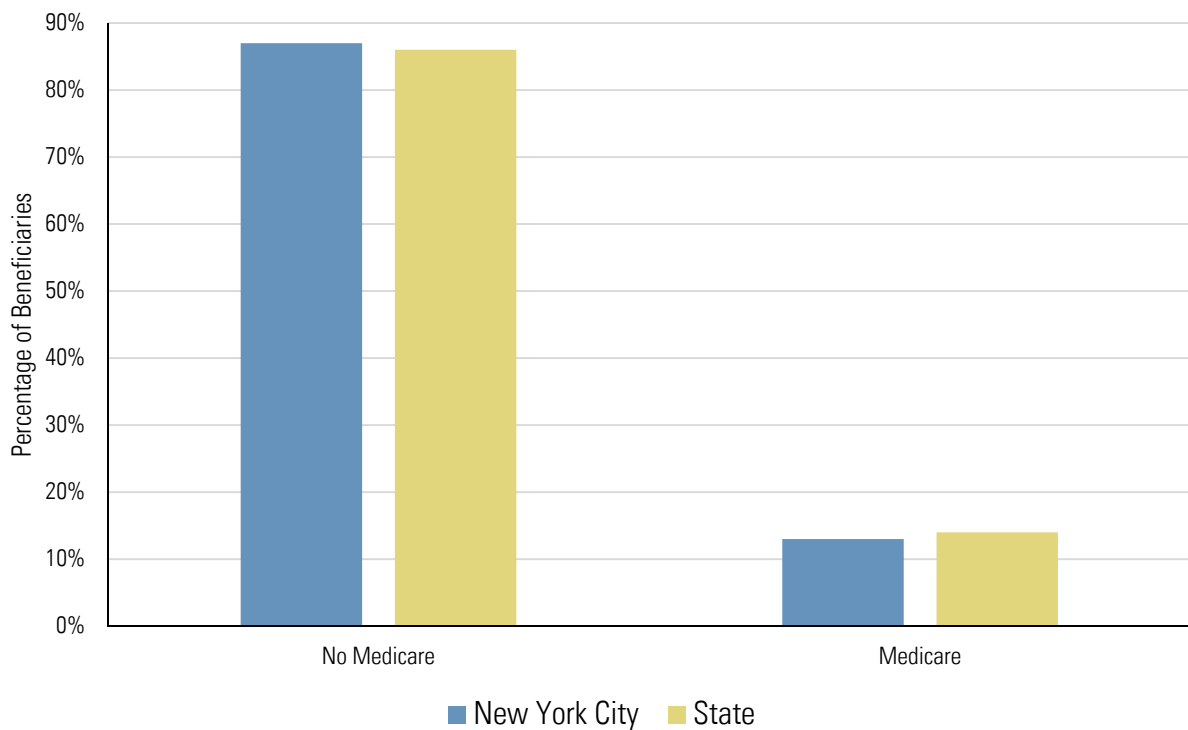
Health Homes in the City: Bronx Accountable Healthcare Network Health Home (BAHN), Bronx-Lebanon Hospital Center, Community Health Care Network, Coordinated Behavioral Care dba Pathways to Wellness, Heritage Health and Housing Home Network, New York City Health and Hospitals Corporation, North Shore Long Island Jewish Health Home, Queens Coordinated Care Partners, Southwest Brooklyn Health Home dba Brooklyn Health Home (Maimonides), St. Luke's – Roosevelt Hospital Center dba Mount Sinai Health Home, The New York and Presbyterian Hospital, Visiting Nurse Service of New York Home Care dba Community Care Management Partners (CCMP)

Characteristics of Medicaid Beneficiaries

Medicaid Beneficiaries by Age Group



Medicaid Beneficiaries by Medicare Enrollment Status



Note: Age group and enrollment status are for Medicaid beneficiaries with a claim in 2013.

Diagnosis and Provider Data

Top 25 Diagnostic Categories of All-Payer Inpatient Admissions (2012)

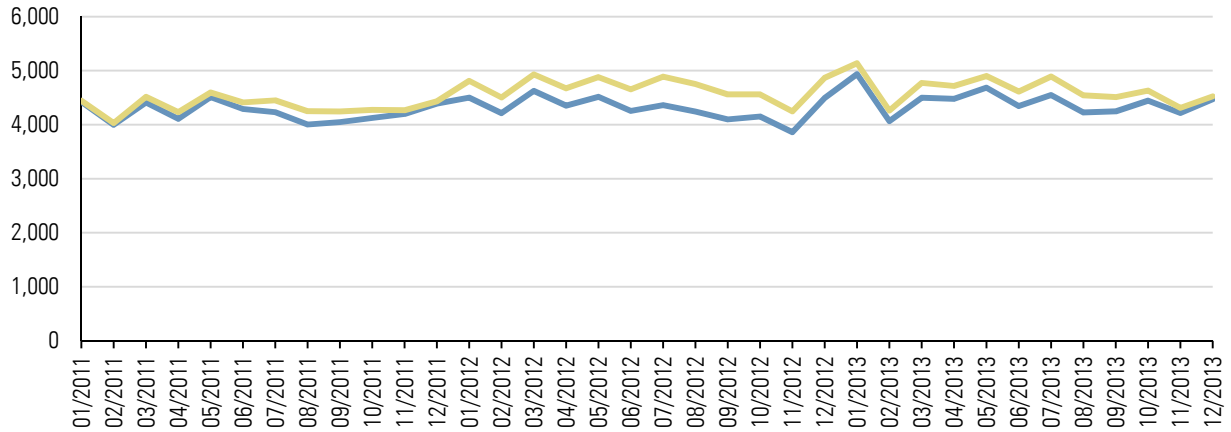
Rank	Diagnosis Category	Number of Discharges	Percent of Discharges	Statewide Percentage
1	Liveborn	115,951	10.32%	9.43%
2	Septicemia (except in labor)	31,092	2.77%	3.03%
3	Alcohol-related disorders	27,689	2.46%	1.85%
4	Nonspecific chest pain	27,485	2.45%	1.93%
5	Schizophrenia and other psychotic disorders	24,532	2.18%	1.69%
6	Mood disorders	24,163	2.15%	2.49%
7	Asthma	23,948	2.13%	1.50%
8	Congestive heart failure; nonhypertensive	23,471	2.09%	2.28%
9	Other complications of birth; puerperium affecting management of mother	21,373	1.90%	1.61%
10	Pneumonia (except that caused by tuberculosis or sexually transmitted disease)	21,224	1.89%	2.19%
11	Substance-related disorders	20,549	1.83%	1.58%
12	Diabetes mellitus with complications	20,418	1.82%	1.52%
13	Coronary atherosclerosis and other heart disease	20,376	1.81%	1.67%
14	Cardiac dysrhythmias	20,002	1.78%	2.02%
15	Skin and subcutaneous tissue infections	18,671	1.66%	1.73%
16	Other complications of pregnancy	17,010	1.51%	1.34%
17	Prolonged pregnancy	16,518	1.47%	1.18%
18	Rehabilitation care; fitting of prostheses; and adjustment of devices	15,298	1.36%	1.33%
19	Complication of device; implant or graft	15,205	1.35%	1.52%
20	Urinary tract infections	14,942	1.33%	1.36%
21	OB-related trauma to perineum and vulva	14,412	1.28%	1.26%
22	Epilepsy; convulsions	14,115	1.26%	1.08%
23	Complications of surgical procedures or medical care	13,198	1.17%	1.30%
24	Acute cerebrovascular disease	13,115	1.17%	1.31%
25	Osteoarthritis	12,940	1.15%	2.05%
Total of Top 25		587,697	52.30%	50.25%
All Other Diagnoses		536,110	47.70%	49.75%
Total for Region		1,123,807		

Top Five Inpatient Providers Serving the Region's Medicaid Beneficiaries (2013)

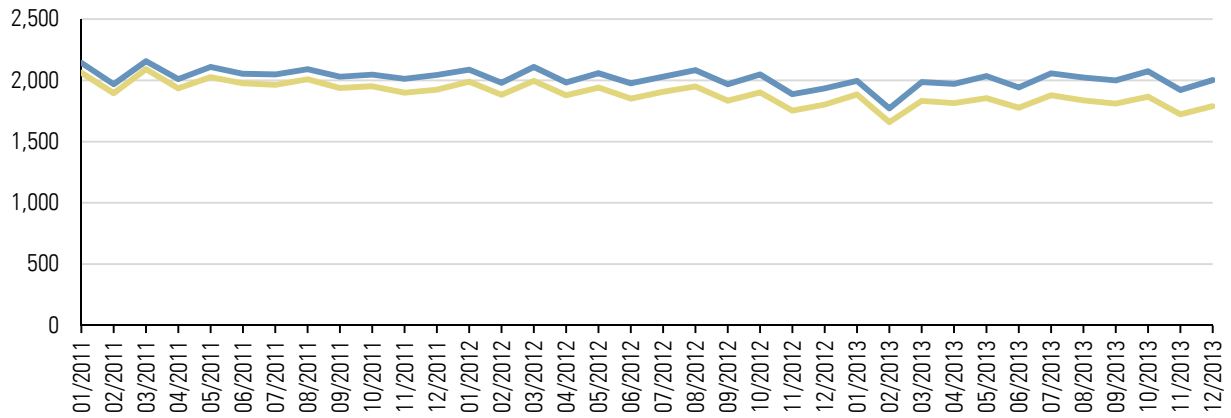
Provider Name	Number of Claims	Number of Unique Patients	Percent of Unique Patients
Montefiore Medical Center	75,966	35,508	8.4%
New York-Presbyterian	60,756	31,046	7.4%
Maimonides Medical Center	48,112	25,139	6.0%
Beth Israel Medical Center	35,968	19,803	4.7%
Bronx-Lebanon Hospital Center	36,586	17,588	4.2%
Total of Top Five Providers	257,388		

Visit Rates (Unadjusted)

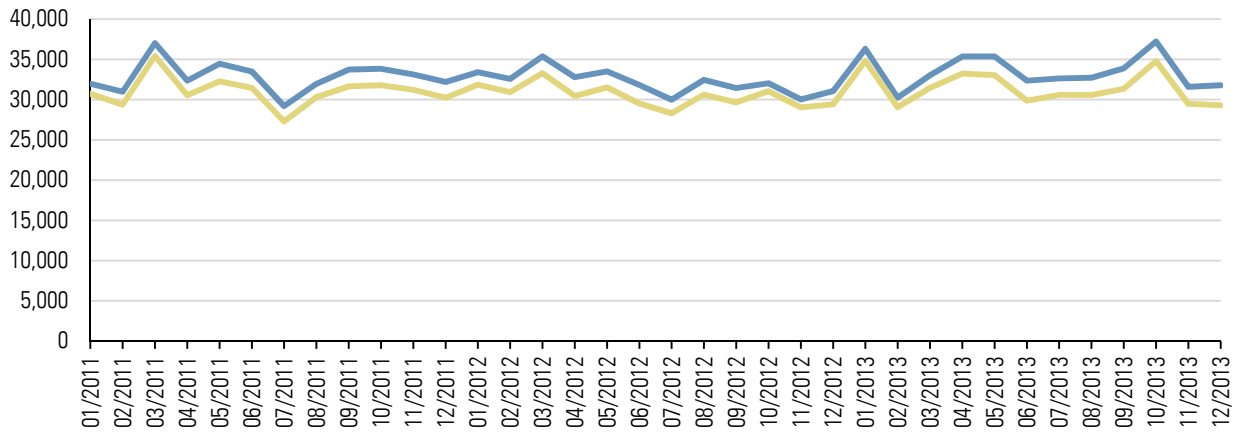
Emergency Room Visit Rate per 100,000 Members



Inpatient Admission Rate per 100,000 Members



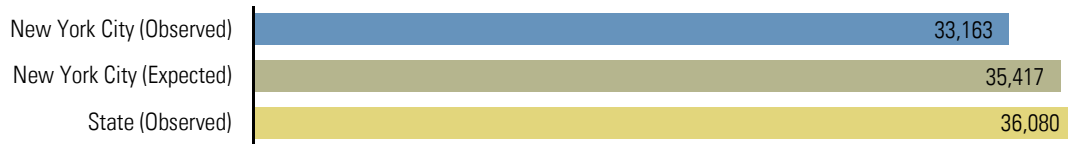
Primary Care Visit Rate per 100,000 Members



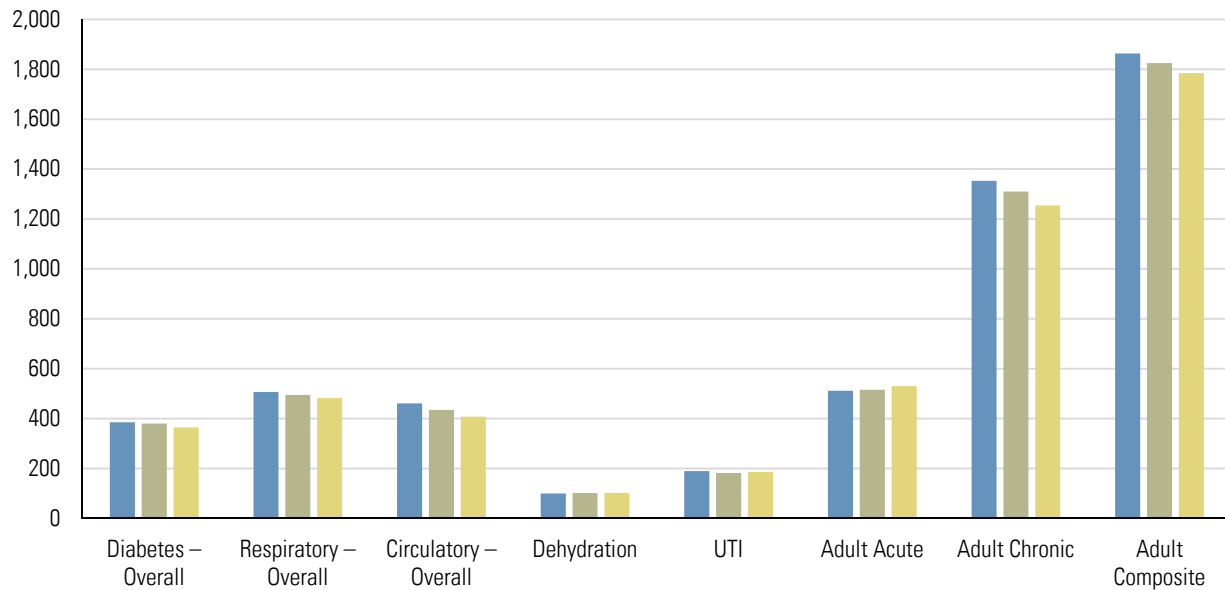
— New York City — State

Quality Measures

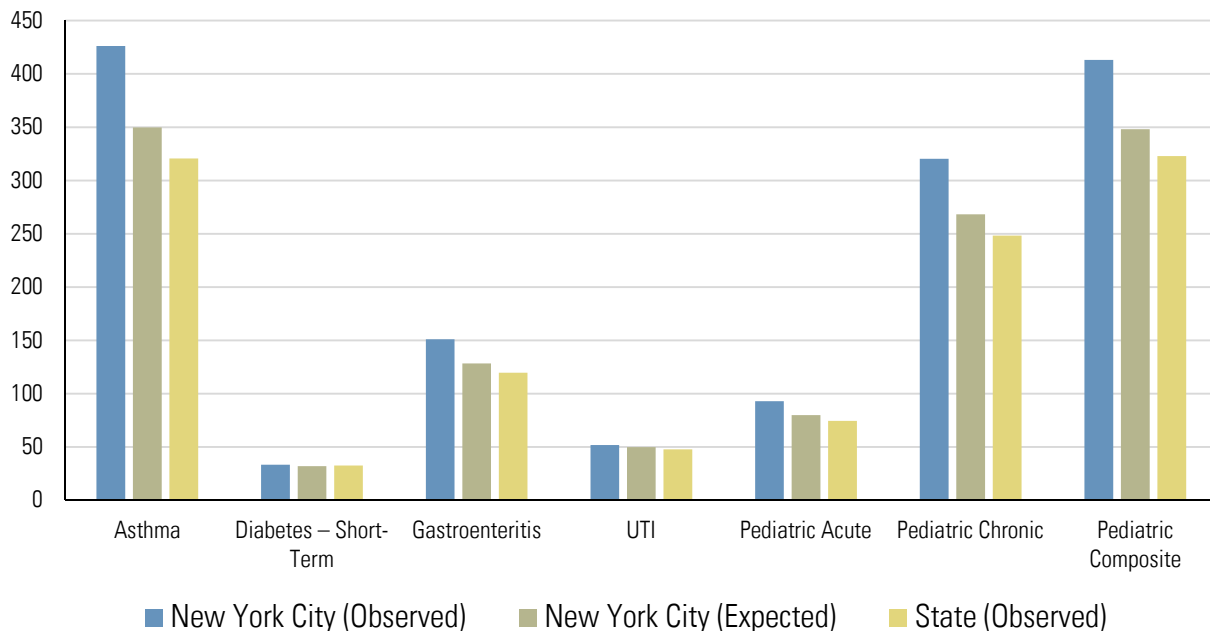
Potentially Preventable Emergency Room Visits (Rate per 100,000 Members)



Prevention Quality Indicators for Adult Discharges (Hospitalization Rate per 100,000 Members)



Prevention Quality Indicators for Pediatric Discharges (Hospitalization Rate per 100,000 Members)



Note: All expected rates are standardized for age, sex, and race/ethnicity. Quality measures are annual rates for 2012.

DSRIP Project Design Grants Awarded in the Region

Provider Name	Counties Served	Total Award	Conditions	Public Hospital
Amida Care, Inc.	Bronx, Kings, New York, Queens, Richmond	\$500,000	Must resubmit with safety net provider as lead or successfully become a safety net provider through the appeal process. Also must demonstrate that you can function as an Integrated Delivery System.	
AW Medical	Bronx, Kings, Nassau, New York, Queens	\$500,000	Restrict geographic area and clearly demonstrate that network meets requirements. Also, need to demonstrate that providers with the PPS can clinically integrate.	
Bronx-Lebanon Hospital Center	Bronx	\$500,000	Discuss geographic overlap with other PPS and ensure that the PPS is financially sustainable.	
Lutheran Medical Center	Kings	\$500,000	None at this time	
Maimonides Medical Center	Kings, Queens	\$500,000	None at this time	
Mount Sinai Hospitals Group	Bronx, Kings, New York, Queens, Richmond, Westchester	\$500,000	None at this time	
<i>New York City Health and Hospitals Corporation</i>				
Bellevue Hospital Center	Kings, New York, Queens	\$285,714	None at this time	✓
Coney Island Hospital	Kings	\$285,714	None at this time	✓
Elmhurst Hospital Center	Queens	\$285,714	None at this time	✓
Harlem Hospital Center	Bronx, New York	\$285,714	None at this time	✓
Jacobi Medical Center	Bronx	\$285,714	None at this time	✓
Kings County Hospital Center	Kings	\$285,714	None at this time	✓
Woodhull Medical and Mental Health Center	Kings	\$285,714	None at this time	✓
Richmond University Medical Center and Staten Island University Hospital	Richmond	\$500,000	None at this time	
St. Barnabas Hospital (dba SBH Health System)	Bronx	\$500,000	Discuss geographic overlap with other PPS and ensure that the PPS is financially sustainable.	
SUNY Downstate Medical Center	Kings	\$333,333	None at this time	✓
The Jamaica Hospital	Kings, Queens	\$500,000	None at this time	
The New York and Presbyterian Hospital	Bronx, Kings, New York, Queens, Westchester	\$500,000	None at this time	
The New York Hospital Medical Center of Queens	Queens	\$500,000	None at this time	